

ORANGE COUNTY TRAFFIC COMMITTEE

COMMITTEE REPORT OF: February 15, 2024 **ITEM D**

SUPERVISORIAL DISTRICT: 5

SUBJECT: Speed Limit 50 MPH

LOCATION: Cow Camp Road
TB 953-B4, B5, C5, D5

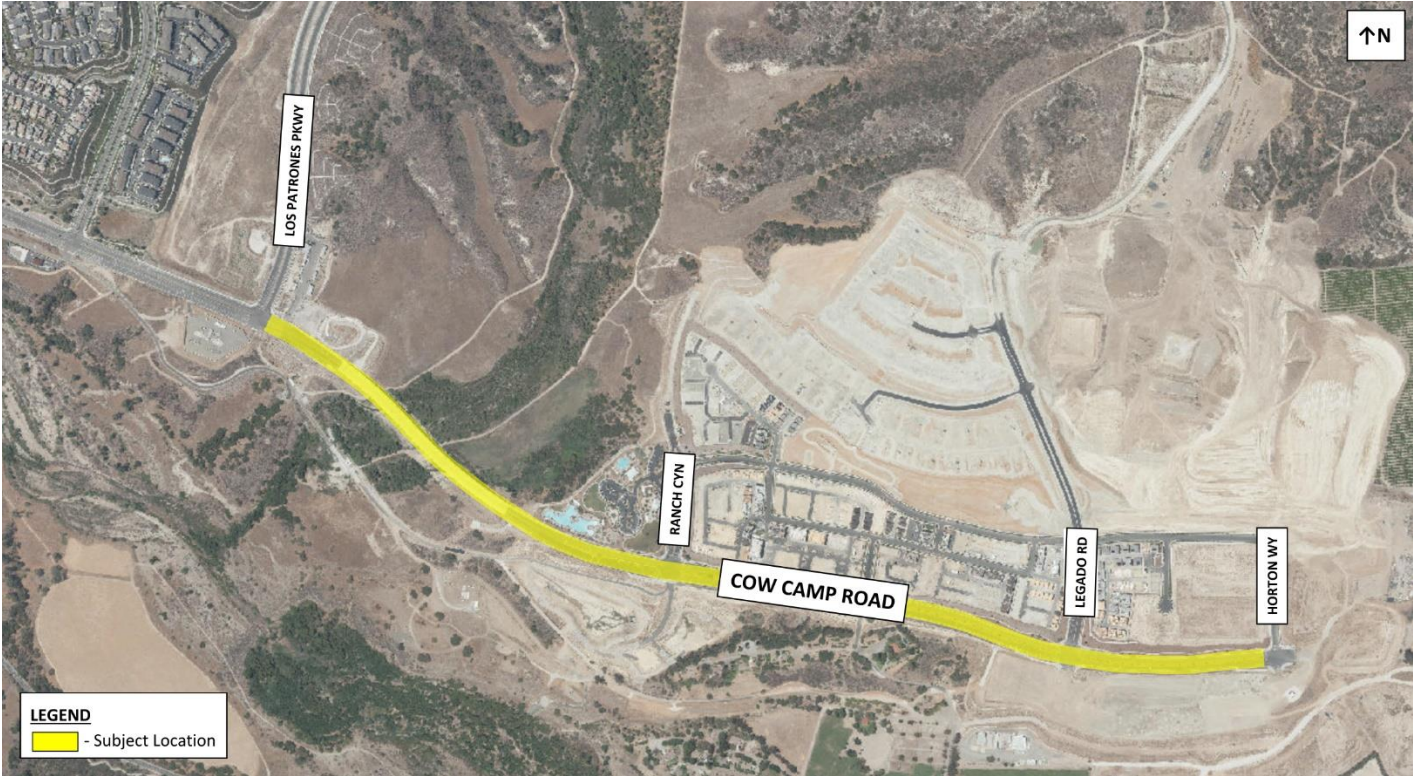
INITIATED BY: Resident

INVESTIGATOR: Denise Esguerra

REQUEST: Establish Speed Limit

DATA:

LOCATION MAP



COMMITTEE REPORT OF: February 15, 2024

ITEM D

EXISTING CONDITIONS

Cow Camp Road between Los Patrones Parkway and Horton Way is located in the unincorporated area of Rancho Mission Viejo (RMV). The road segment is classified as a Major Arterial Highway and transitions to a Primary Arterial Highway towards its east end. The subject segment of Cow Camp Road is a 1.3 mile-long, four-lane roadway varying from 68-feet to 144-foot in travel width. The roadway has painted and raised medians of varying widths and on-street parking is prohibited throughout. Both sides of the roadway have a 7-foot Class II NEV/Bike Lane with a 3-foot buffer. The roadway is fully improved with curb, gutter, and sidewalk. Within the study segment, Cow Camp Road has two signalized intersections, one at Ranch Canyon and one at Legado Road; and a yield controlled 'T' intersection at Martinez Road.

Cow Camp Road, east of Horton Way, is currently under construction. Traffic volume and roadway conditions may change after this segment is open to the public. There is currently no posted speed limit on Cow Camp Road between Los Patrones and Horton Way.

TRAFFIC VOLUMES – (BOTH DIRECTIONS)

Location: Cow Camp Road	Date	ADT Volume	Peak Hour Volume	
			AM	PM
From Los Patrones Parkway to Horton Way	01/30/2024	6,265	567	570
	01/31/2024	6,226	566	550

SPEED ZONE FIELD DATA

Location: Cow Camp Road	Date	85 th Percentile (MPH)	50 th Percentile (MPH)	Pace Speed (MPH)	Pace (%)	Posted Speed Limit (MPH)
		EB/WB	EB/WB	EB/WB	EB/WB	
East of bridge	01/31/24	54	48	42-54	78.2	none

ACCIDENT DATA

From January 2021 to December 2023, OC Traffic Engineering's collision database show four reported accidents along this segment of Cow Camp Road. Two of the accidents occurred at midblock locations with the collision factors of "Driving Under the Influence" and "Non-Collision", both resulted in property damage. The other two were intersection related due to "Improper Turning", one occurred at Los Patrones Parkway intersection and the other at Ranch Canyon.

COMMITTEE REPORT OF: February 15, 2024**ITEM D****ENFORCEMENT JURISDICTION**

The California Highway Patrol (CHP) provides speed enforcement within the County unincorporated area.

ANALYSIS

By Resolutions (No. 22-024 and No. 22-081), Cow Camp Road-Segment 2 (Phases 2a and 2b) were accepted into the County Road System in 2022. Cow Camp Road Phases 2a (from Los Patrones Parkway to west of Ranch Canyon) and 2b (from west of Ranch Canyon to Horton Way), serve as one of the primary access points into the unincorporated Rancho Mission Viejo community from Antonio Parkway and Los Patrones Parkway. Currently, this segment of Cow Camp Road has no posted speed limit; therefore, the maximum speed limit of 65 mph applies per California Vehicle Code (CVC) Section 22349. State law permits lowering the maximum speed limit based on an Engineering and Traffic Survey (E&TS). Posting a speed limit based on an E&TS would allow for CHP enforcement.

The California Manual on Uniform Traffic Control Devices (CA MUTCD) requires the posted speed limit to be established at the nearest 5 mph increment to the 85th percentile based on the E&TS with the option of further reducing by 5 mph based on highway traffic and roadside condition not readily apparent to the driver.

OC Public Works Traffic Engineering conducted an E&TS in compliance with the current CVC requirements on Cow Camp Road between Los Patrones Parkway and Horton Way. The survey results on Cow Camp Road showed a measured 85th percentile speed of 54 mph. The nearest 5 mph increment of the 85th percentile is 55 mph along the study segment of Cow Camp Road.

The State of California adopted a bill (AB2353) in October 2017 that authorized the development of a Neighborhood Electric Vehicle (NEV) Plan for RMV. For the studied roadway segment, a Class II NEV/Bike Lane has been constructed along Cow Camp Road providing a safer and more convenient connection for the NEV and Bike users between the communities in RMV.

With the Class II NEV/Bike Lanes on Cow Camp Road, it is important to provide comfort and safety to the NEV users and bicyclists. Therefore, a reduction of 5 mph from 55 mph to 50 mph on Cow Camp Road between Los Patrones Parkway and Horton Way is justified.

Traffic study is based on the present condition along Cow Camp Road, as the roadway is currently under construction east of Horton Way. Future studies may be necessary to re-evaluate the speed limit should there be any changes in the future roadway conditions.

COMMITTEE REPORT OF: February 15, 2024

ITEM D

PUBLIC COMMENTS AND INPUT

Mr. Yates, Vice President of Community Development of Rancho Mission Viejo, supported the recommendation.

TRAFFIC COMMITTEE DISCUSSION

The Traffic Committee representative from Caltrans verified the signalized intersections. District 5 Community Member has moved to approve the recommendation and was seconded by the representative from OCPW Operations and Maintenance. The Committee unanimously approved the motion.

RECOMMENDATION

Establish a 50 mph “Radar Enforced” speed limit on Cow Camp Road between Los Patrones Parkway and Horton Way.

BOARD ACTION NECESSARY TO ENACT THIS RECOMMENDATION

1. Approve this report.
2. By resolution, establish a 50 mph “Radar Enforced” speed limit on Cow Camp Road between Los Patrones Parkway and Horton Way.