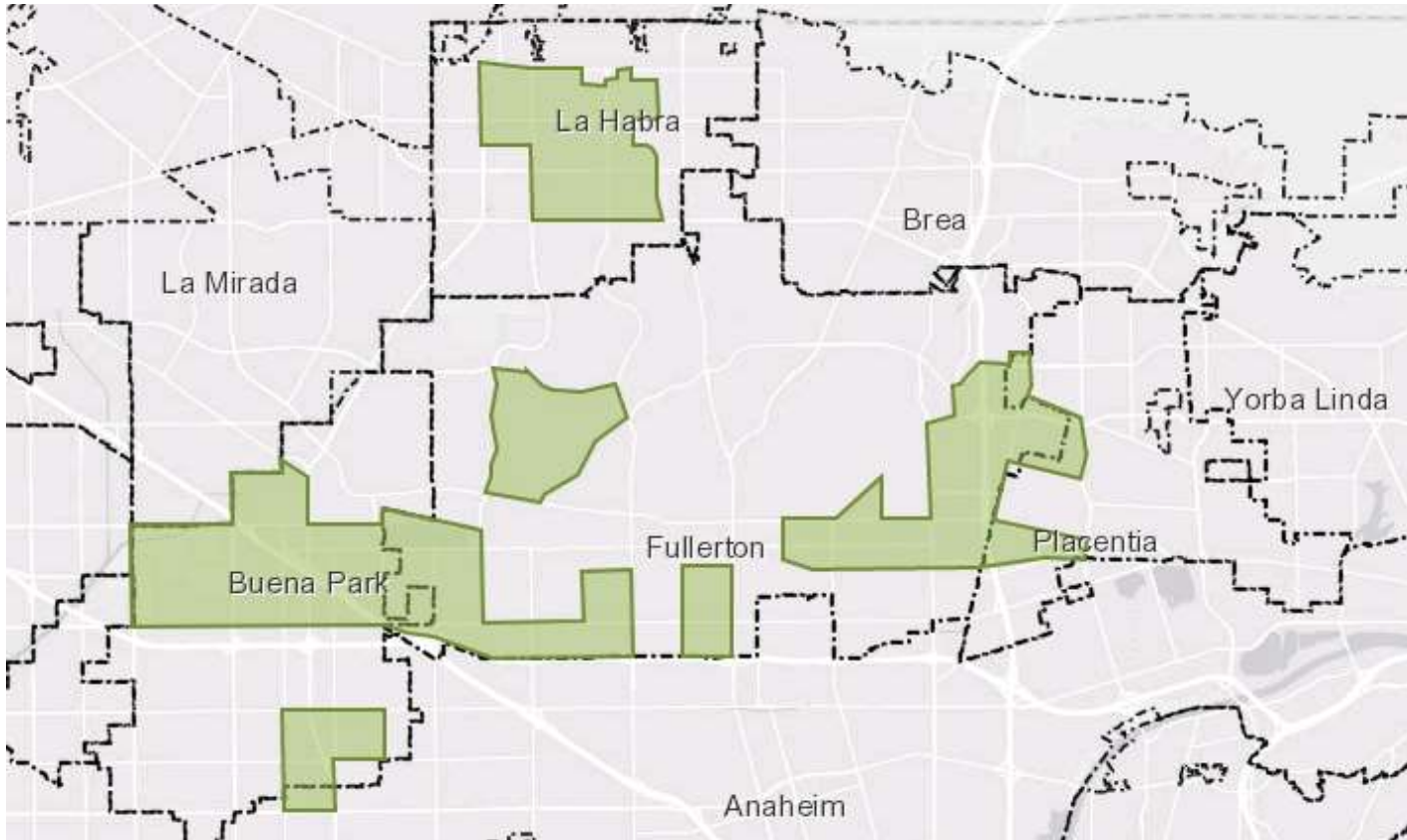


Outreach Zone 1

HTC Population: 124,121

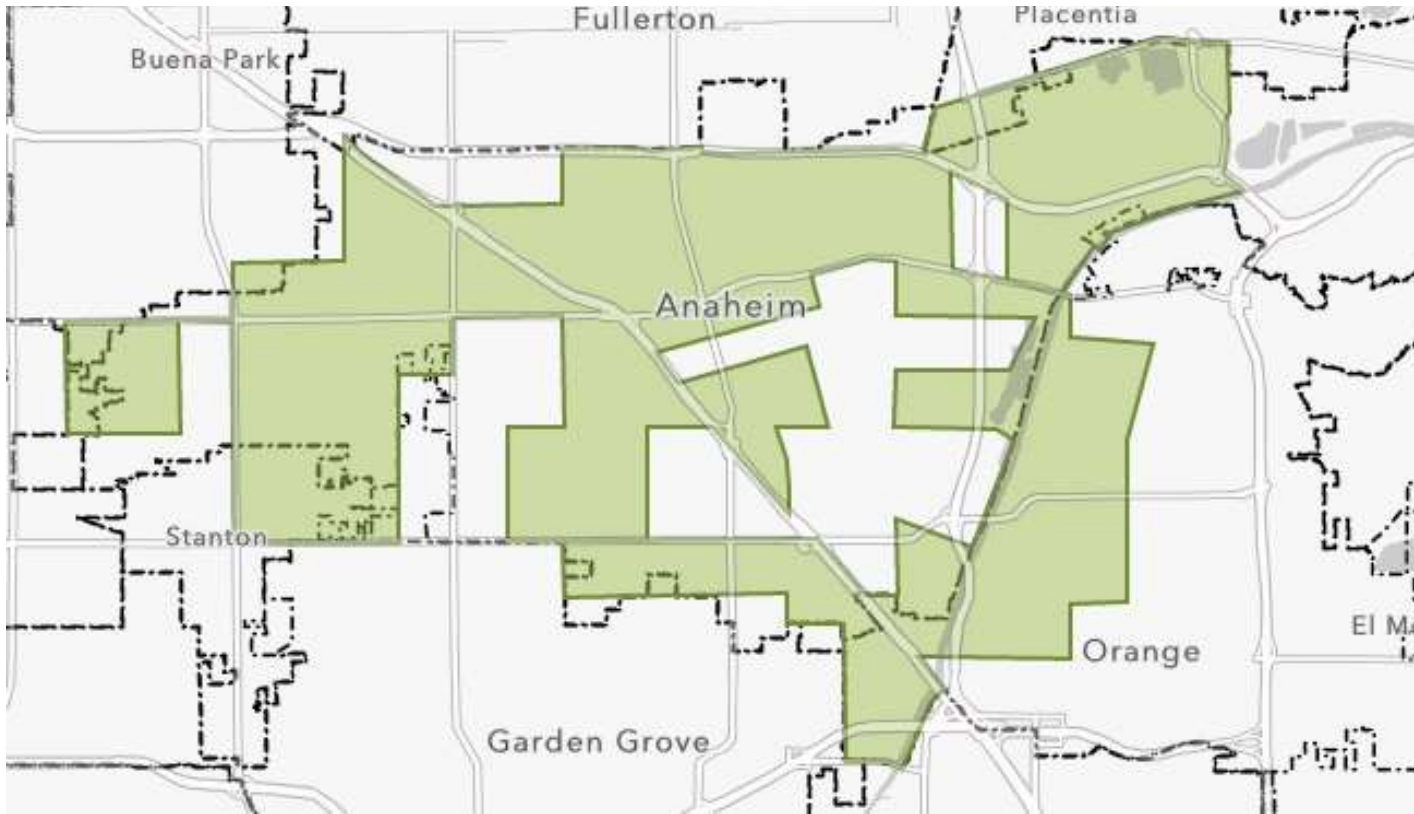


| Zone | City | FID | GEOID | Tract label | Population | CA HTC Index | Top Non-English Languages (%) | | | | | |
|------|-----------|------|------------|---------------------|------------|--------------|-------------------------------|------|---------|------|------------|-----|
| 1 | Placentia | 31 | 6059011711 | Census Tract 117.11 | 8,139 | 78 | Spanish | 57 | Hindi | 8 | Tagalog | 7.6 |
| 1 | Fullerton | 846 | 6059001801 | Census Tract 18.01 | 5,232 | 90 | Spanish | 72.2 | Korean | 11.4 | Vietnamese | 9.3 |
| 1 | Fullerton | 847 | 6059001802 | Census Tract 18.02 | 8,230 | 64 | Spanish | 81.5 | Korean | 15 | Chinese | 2.3 |
| 1 | Fullerton | 848 | 6059001903 | Census Tract 19.03 | 3,612 | 51 | Spanish | 77.1 | Tagalog | 6.1 | Korean | 4.7 |
| 1 | Fullerton | 850 | 6059011101 | Census Tract 111.01 | 4,504 | 60 | Spanish | 90.9 | Chinese | 3.8 | Vietnamese | 3.3 |
| 1 | Fullerton | 904 | 6059011403 | Census Tract 114.03 | 6,722 | 58 | Spanish | 64.6 | Korean | 11.8 | Japanese | 5.5 |
| 1 | Fullerton | 905 | 6059011502 | Census Tract 115.02 | 3,982 | 47 | Spanish | 61.7 | Chinese | 13.8 | Korean | 9.5 |
| 1 | Fullerton | 964 | 6059011504 | Census Tract 115.04 | 6,148 | 75 | Chinese | 43.8 | Spanish | 20.5 | Arabic | 9.6 |
| 1 | Fullerton | 965 | 6059011601 | Census Tract 116.01 | 7,717 | 94 | Spanish | 91.5 | Korean | 5.3 | Chinese | 2 |
| 1 | Placentia | 1016 | 6059011708 | Census Tract 117.08 | 4,668 | 61 | Chinese | 39.8 | Arabic | 10.8 | Korean | 9.1 |
| 1 | Placentia | 3000 | 6059011721 | Census Tract 117.21 | 5,184 | 69 | Spanish | 89.7 | Tagalog | 3.9 | Gujarati | 2.3 |

| | | | | | | | | | | | | |
|---|------------|------|------------|----------------------|-------|-----------|---------|------|---------|------|--------------------|-----|
| 1 | La Habra | 3196 | 6059001202 | Census Tract 12.02 | 3,777 | 52 | Spanish | 97.3 | Korean | 1.8 | Japanese | 0.6 |
| 1 | La Habra | 3254 | 6059001303 | Census Tract 13.03 | 5,892 | 47 | Spanish | 69 | Korean | 21.3 | Tagalog | 2.5 |
| 1 | La Habra | 3255 | 6059001304 | Census Tract 13.04 | 3,827 | 65 | Spanish | 93.8 | Tagalog | 3.4 | Other PI languages | 2.7 |
| 1 | Buena Park | 3511 | 6059110402 | Census Tract 1104.02 | 5,590 | 56 | Spanish | 69.7 | Korean | 11 | Tagalog | 8.1 |
| 1 | Buena Park | 3555 | 6059110500 | Census Tract 1105 | 8,992 | 85 | Spanish | 72.3 | Korean | 15.6 | Tagalog | 6.7 |
| 1 | Buena Park | 3556 | 6059110603 | Census Tract 1106.03 | 9,161 | 77 | Spanish | 77.3 | Korean | 16.7 | Chinese | 3 |
| 1 | La Habra | 3560 | 6059001201 | Census Tract 12.01 | 5,737 | 57 | Spanish | 94 | Korean | 2.2 | Russian | 1.9 |
| 1 | Buena Park | 3605 | 6059110606 | Census Tract 1106.06 | 4,483 | 68 | Spanish | 69.9 | Tagalog | 11.9 | Korean | 9.8 |
| 1 | La Habra | 3808 | 6059001103 | Census Tract 11.03 | 4,753 | 70 | Spanish | 83.8 | Korean | 8.9 | Tagalog | 6 |
| 1 | Fullerton | 6738 | 6059001704 | Census Tract 17.04 | 7,771 | 48 | Korean | 74 | Chinese | 12.3 | Gujarati | 6.5 |

Outreach Zone 2

HTC Population: 256,906

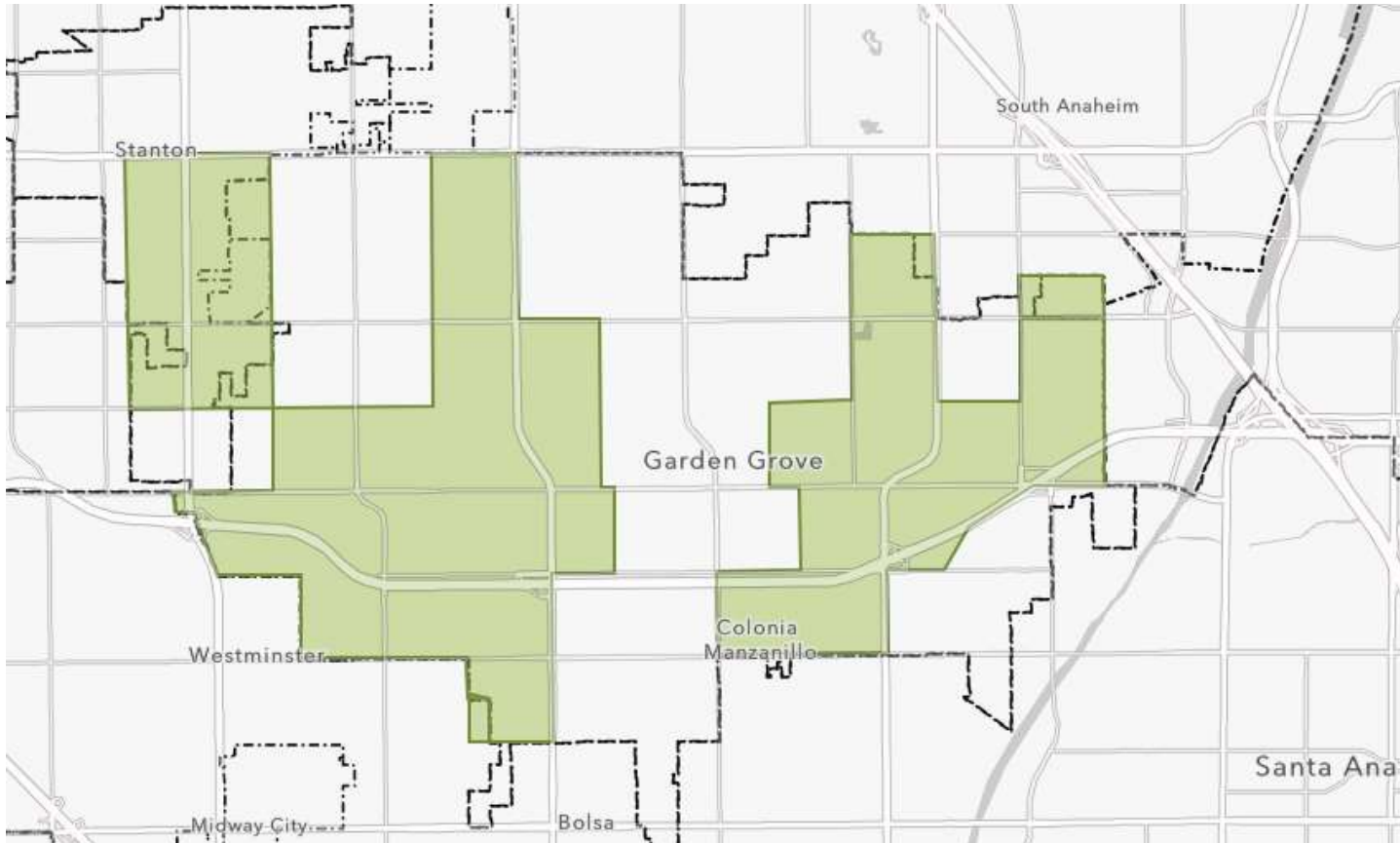


| Zone | City | FID | GEOID | Tract label | Population | CA HTC Index | Top Non-English Languages (%) | | | | | |
|------|------------|-----|------------|---------------------|------------|--------------|-------------------------------|------|------------|------|-------------------|-----|
| 2 | Anaheim | 179 | 6059087403 | Census Tract 874.03 | 3,374 | 88 | Spanish | 96.1 | Vietnamese | 1.7 | Korean | 1.2 |
| 2 | Anaheim | 369 | 6059086402 | Census Tract 864.02 | 5,587 | 47 | Spanish | 83.7 | Tagalog | 8.7 | Vietnamese | 3.9 |
| 2 | Anaheim | 370 | 6059086404 | Census Tract 864.04 | 6,815 | 53 | Spanish | 84.2 | Vietnamese | 5.4 | Chinese | 4.7 |
| 2 | Anaheim | 372 | 6059086407 | Census Tract 864.07 | 6,693 | 48 | Spanish | 75.1 | Vietnamese | 12.5 | Tagalog | 3.2 |
| 2 | Anaheim | 379 | 6059086501 | Census Tract 865.01 | 4,421 | 55 | Spanish | 99.4 | Arabic | 0.4 | Chinese | 0.3 |
| 2 | Anaheim | 380 | 6059086502 | Census Tract 865.02 | 6,320 | 78 | Spanish | 98.7 | Korean | 0.9 | Vietnamese | 0.5 |
| 2 | Anaheim | 427 | 6059086601 | Census Tract 866.01 | 10,194 | 87 | Spanish | 91.4 | Vietnamese | 3.9 | African languages | 3.3 |
| 2 | Anaheim | 433 | 6059086702 | Census Tract 867.02 | 7,471 | 65 | Spanish | 74.1 | Tagalog | 4.8 | Vietnamese | 4 |
| 2 | Anaheim | 435 | 6059086602 | Census Tract 866.02 | 6,505 | 74 | Spanish | 82.6 | Vietnamese | 4.7 | Chinese | 2.7 |
| 2 | Anaheim | 463 | 6059086802 | Census Tract 868.02 | 5,850 | 54 | Spanish | 65.4 | Vietnamese | 13.6 | Chinese | 4.9 |
| 2 | Anaheim | 464 | 6059086901 | Census Tract 869.01 | 8,685 | 83 | Spanish | 54.5 | Vietnamese | 17 | Tagalog | 9.9 |
| 2 | Buena Park | 466 | 6059086803 | Census Tract 868.03 | 9,411 | 55 | Spanish | 45.8 | Korean | 20 | Vietnamese | 15 |

| | | | | | | | | | | | | |
|---|-----------|------|------------|----------------------|--------|------------|---------|------|------------|------|-------------------|------|
| 2 | Anaheim | 467 | 6059086903 | Census Tract 869.03 | 7,366 | 59 | Spanish | 67.4 | Vietnamese | 12.4 | Korean | 4.2 |
| 2 | Orange | 612 | 6059076101 | Census Tract 761.01 | 10,338 | 48 | Spanish | 59 | Vietnamese | 13.7 | Chinese | 13.2 |
| 2 | Orange | 630 | 6059076102 | Census Tract 761.02 | 7,949 | 64 | Spanish | 67 | Korean | 17.6 | Vietnamese | 7.9 |
| 2 | Anaheim | 702 | 6059086405 | Census Tract 864.05 | 7,568 | 65 | Spanish | 94.9 | Vietnamese | 3.4 | Persian | 0.5 |
| 2 | Anaheim | 718 | 6059087101 | Census Tract 871.01 | 4,743 | 77 | Spanish | 35.4 | Korean | 25.4 | Vietnamese | 10.5 |
| 2 | Anaheim | 719 | 6059087102 | Census Tract 871.02 | 6,631 | 56 | Spanish | 76.1 | Korean | 15.4 | Vietnamese | 4.5 |
| 2 | Anaheim | 721 | 6059087105 | Census Tract 871.05 | 4,280 | 52 | Spanish | 65 | Vietnamese | 17.7 | Arabic | 6.1 |
| 2 | Anaheim | 722 | 6059087106 | Census Tract 871.06 | 5,164 | 77 | Spanish | 83.1 | Vietnamese | 9.3 | Tagalog | 3 |
| 2 | Placentia | 2999 | 6059011720 | Census Tract 117.20 | 6,712 | 91 | Spanish | 96.3 | Tagalog | 1.4 | Vietnamese | 1.1 |
| 2 | Anaheim | 3327 | 6059087200 | Census Tract 872 | 7,924 | 60 | Spanish | 90.8 | Vietnamese | 2.1 | African languages | 1.9 |
| 2 | Anaheim | 3328 | 6059087300 | Census Tract 873 | 10,296 | 84 | Spanish | 90.7 | Chinese | 4 | Korean | 3.9 |
| 2 | Anaheim | 3330 | 6059087405 | Census Tract 874.05 | 6,029 | 100 | Spanish | 93.4 | Tagalog | 2 | Vietnamese | 1.4 |
| 2 | Anaheim | 3428 | 6059087503 | Census Tract 875.03 | 6,565 | 64 | Spanish | 81.4 | Vietnamese | 7.3 | Chinese | 2.6 |
| 2 | Anaheim | 3441 | 6059087504 | Census Tract 875.04 | 7,407 | 90 | Spanish | 86.2 | Vietnamese | 10.6 | Tagalog | 1.3 |
| 2 | Anaheim | 3442 | 6059087601 | Census Tract 876.01 | 5,356 | 73 | Spanish | 68.3 | Vietnamese | 10.5 | Arabic | 7.4 |
| 2 | Anaheim | 3443 | 6059087602 | Census Tract 876.02 | 7,668 | 48 | Spanish | 70.5 | Vietnamese | 16.8 | Korean | 4.3 |
| 2 | Anaheim | 3495 | 6059110202 | Census Tract 1102.02 | 7,874 | 52 | Spanish | 34.1 | Tagalog | 20.6 | Vietnamese | 15.4 |
| 2 | Orange | 3572 | 6059076204 | Census Tract 762.04 | 4,732 | 67 | Spanish | 94.6 | Vietnamese | 4 | Chinese | 1.1 |
| 2 | Stanton | 3579 | 6059087803 | Census Tract 878.03 | 5,501 | 92 | Spanish | 70.3 | Vietnamese | 22.1 | Tagalog | 4.3 |
| 2 | Stanton | 3580 | 6059087805 | Census Tract 878.05 | 6,860 | 65 | Spanish | 65.7 | Vietnamese | 22 | Korean | 5.4 |
| 2 | Anaheim | 3581 | 6059087806 | Census Tract 878.06 | 5,876 | 74 | Spanish | 47.2 | Vietnamese | 29 | Arabic | 8.7 |
| 2 | Anaheim | 3693 | 6059086304 | Census Tract 863.04 | 4,836 | 55 | Spanish | 85.5 | Chinese | 4 | Polish | 2.8 |
| 2 | Anaheim | 3695 | 6059086306 | Census Tract 863.06 | 4,786 | 51 | Spanish | 73.9 | Vietnamese | 15.2 | Chinese | 5.1 |
| 2 | Anaheim | 4176 | 6059087505 | Census Tract 875.05 | 4,895 | 74 | Spanish | 70.5 | Vietnamese | 9 | Korean | 6 |
| 2 | Anaheim | 6663 | 6059087001 | Census Tract 870.01 | 5,197 | 63 | Spanish | 72.3 | Vietnamese | 12.9 | Tagalog | 4.3 |
| 2 | Anaheim | 6664 | 6059087002 | Census Tract 870.02 | 7,750 | 55 | Spanish | 46.5 | Vietnamese | 23.1 | Arabic | 10.4 |
| 2 | Anaheim | 6779 | 6059011714 | Census Tract 117.14 | 945 | 63 | Spanish | 86.2 | Chinese | 5.3 | Arabic | 4.2 |
| 2 | Anaheim | 8008 | 6059087404 | Census Tract 874.04 | 4,332 | 89 | Spanish | 96.1 | Vietnamese | 2.5 | Chinese | 1.1 |

Outreach Zone 3

HTC Population: 97,892

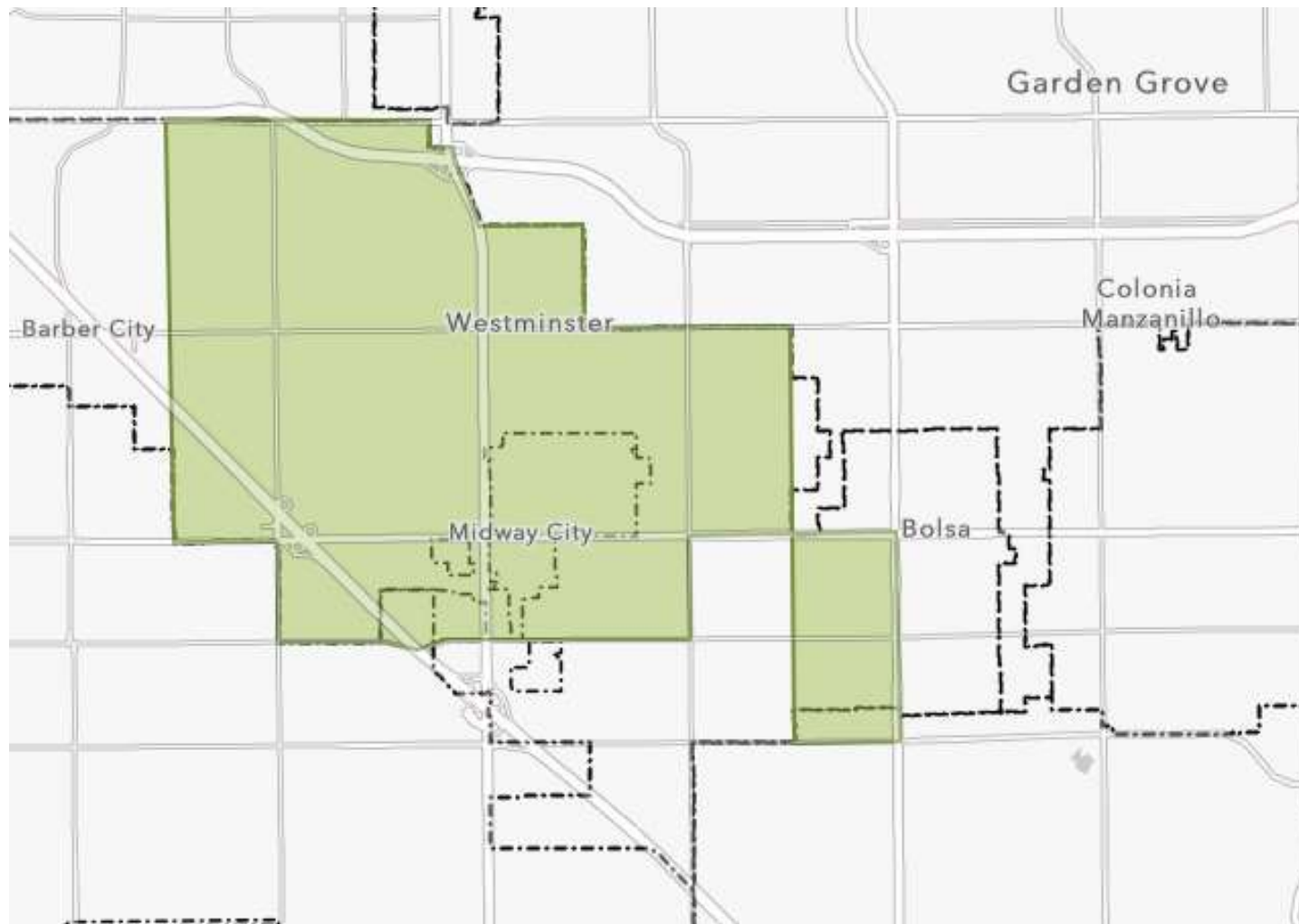


| Zone | City | FID | GEOID | Tract label | Population | CA HTC Index | Top Non-English Languages (%) | | | | | |
|------|--------------|-----|------------|---------------------|------------|--------------------|-------------------------------|------|------------|------|---------|------|
| 3 | Stanton | 189 | 6059087902 | Census Tract 879.02 | 5,947 | 67 | Spanish | 57.1 | Vietnamese | 39.8 | Mon | 1.4 |
| 3 | Garden Grove | 231 | 6059088702 | Census Tract 887.02 | 6,458 | 49 | Vietnamese | 61.1 | Spanish | 23.9 | Korean | 9.4 |
| 3 | Garden Grove | 382 | 6059088107 | Census Tract 881.07 | 5,779 | 51 | Vietnamese | 56.5 | Spanish | 26.2 | Korean | 14.8 |
| 3 | Garden Grove | 383 | 6059088201 | Census Tract 882.01 | 4,466 | 60 | Spanish | 53.2 | Vietnamese | 42.5 | Korean | 2.2 |
| 3 | Garden Grove | 385 | 6059088203 | Census Tract 882.03 | 5,309 | 57 | Vietnamese | 41.2 | Spanish | 38.8 | Arabic | 9.1 |
| 3 | Garden Grove | 438 | 6059088402 | Census Tract 884.02 | 5,103 | 64 | Spanish | 68.9 | Vietnamese | 20.2 | Tagalog | 7.5 |
| 3 | Garden Grove | 440 | 6059088501 | Census Tract 885.01 | 6,911 | 52 | Spanish | 59.4 | Vietnamese | 37.5 | Korean | 2.4 |
| 3 | Garden Grove | 441 | 6059088802 | Census Tract 888.02 | 5,374 | 55 | Vietnamese | 58.7 | Spanish | 33.1 | Korean | 2.3 |
| 3 | Garden Grove | 442 | 6059088901 | Census Tract 889.01 | 7,187 | 52 | Vietnamese | 79.2 | Spanish | 16 | Urdu | 1.7 |
| 3 | Garden Grove | 470 | 6059088502 | Census Tract 885.02 | 5,222 | 63 | Vietnamese | 52.1 | Spanish | 34.4 | Korean | 9.1 |

| | | | | | | | | | | | | |
|---|--------------|------|------------|---------------------|-------|-----------|------------|------|------------|------|---------|------|
| 3 | Garden Grove | 513 | 6059088701 | Census Tract 887.01 | 6,191 | 77 | Vietnamese | 47.1 | Spanish | 35.8 | Korean | 12.3 |
| 3 | Garden Grove | 514 | 6059088801 | Census Tract 888.01 | 7,622 | 61 | Vietnamese | 56.9 | Spanish | 17.8 | Korean | 17.8 |
| 3 | Garden Grove | 631 | 6059076103 | Census Tract 761.03 | 9,186 | 69 | Spanish | 61 | Vietnamese | 33 | Arabic | 2.6 |
| 3 | Garden Grove | 3446 | 6059089003 | Census Tract 890.03 | 3,822 | 64 | Spanish | 56.7 | Vietnamese | 40 | Korean | 0.9 |
| 3 | Stanton | 3699 | 6059088104 | Census Tract 881.04 | 4,967 | 57 | Vietnamese | 46.5 | Spanish | 44.6 | Korean | 3.7 |
| 3 | Garden Grove | 6727 | 6059089106 | Census Tract 891.06 | 4,388 | 74 | Spanish | 64.8 | Vietnamese | 28.3 | Chinese | 4.1 |
| 3 | Stanton | 8006 | 6059087901 | Census Tract 879.01 | 3,960 | 55 | Spanish | 44.6 | Vietnamese | 41.1 | Korean | 7.2 |

Outreach Zone 4

HTC Population: 60,819



| Zone | City | FID | GEOID | Tract label | Population | CA HTC Index | Top Non-English Languages (%) | | | | | |
|------|-------------|-----|------------|---------------------|------------|--------------|-------------------------------|------|---------|------|---------|-----|
| 4 | Westminster | 307 | 6059099223 | Census Tract 992.23 | 4,750 | 62 | Vietnamese | 70.2 | Spanish | 12.9 | Arabic | 7 |
| 4 | Westminster | 405 | 6059099701 | Census Tract 997.01 | 6,181 | 55 | Vietnamese | 78.8 | Spanish | 13.9 | Chinese | 1.9 |
| 4 | Westminster | 448 | 6059099702 | Census Tract 997.02 | 8,129 | 54 | Vietnamese | 59.9 | Spanish | 21.7 | Chinese | 5.9 |
| 4 | Westminster | 473 | 6059088905 | Census Tract 889.05 | 5,456 | 57 | Vietnamese | 85.5 | Spanish | 11 | Mon | 1.7 |
| 4 | Westminster | 600 | 6059099801 | Census Tract 998.01 | 5,855 | 53 | Vietnamese | 66.9 | Spanish | 29.9 | Korean | 1.4 |

| | | | | | | | | | | | | |
|---|-------------|------|------------|---------------------|-------|-----------|------------|------|---------|------|---------|-----|
| 4 | Westminster | 601 | 6059099802 | Census Tract 998.02 | 5,100 | 80 | Vietnamese | 61.3 | Spanish | 33.9 | Korean | 2.1 |
| 4 | Westminster | 602 | 6059099803 | Census Tract 998.03 | 5,368 | 66 | Vietnamese | 68.3 | Spanish | 25.2 | Chinese | 3.3 |
| 4 | Westminster | 3667 | 6059099601 | Census Tract 996.01 | 7,301 | 72 | Vietnamese | 76.4 | Spanish | 16.6 | Mon | 2.4 |
| 4 | Westminster | 6591 | 6059099903 | Census Tract 999.03 | 6,143 | 51 | Vietnamese | 58.6 | Spanish | 34.4 | Chinese | 4 |
| 4 | Westminster | 6607 | 6059099904 | Census Tract 999.04 | 6,536 | 63 | Vietnamese | 62.4 | Spanish | 30.6 | Chinese | 2.4 |

Outreach Zone 5

HTC Population: 294,468

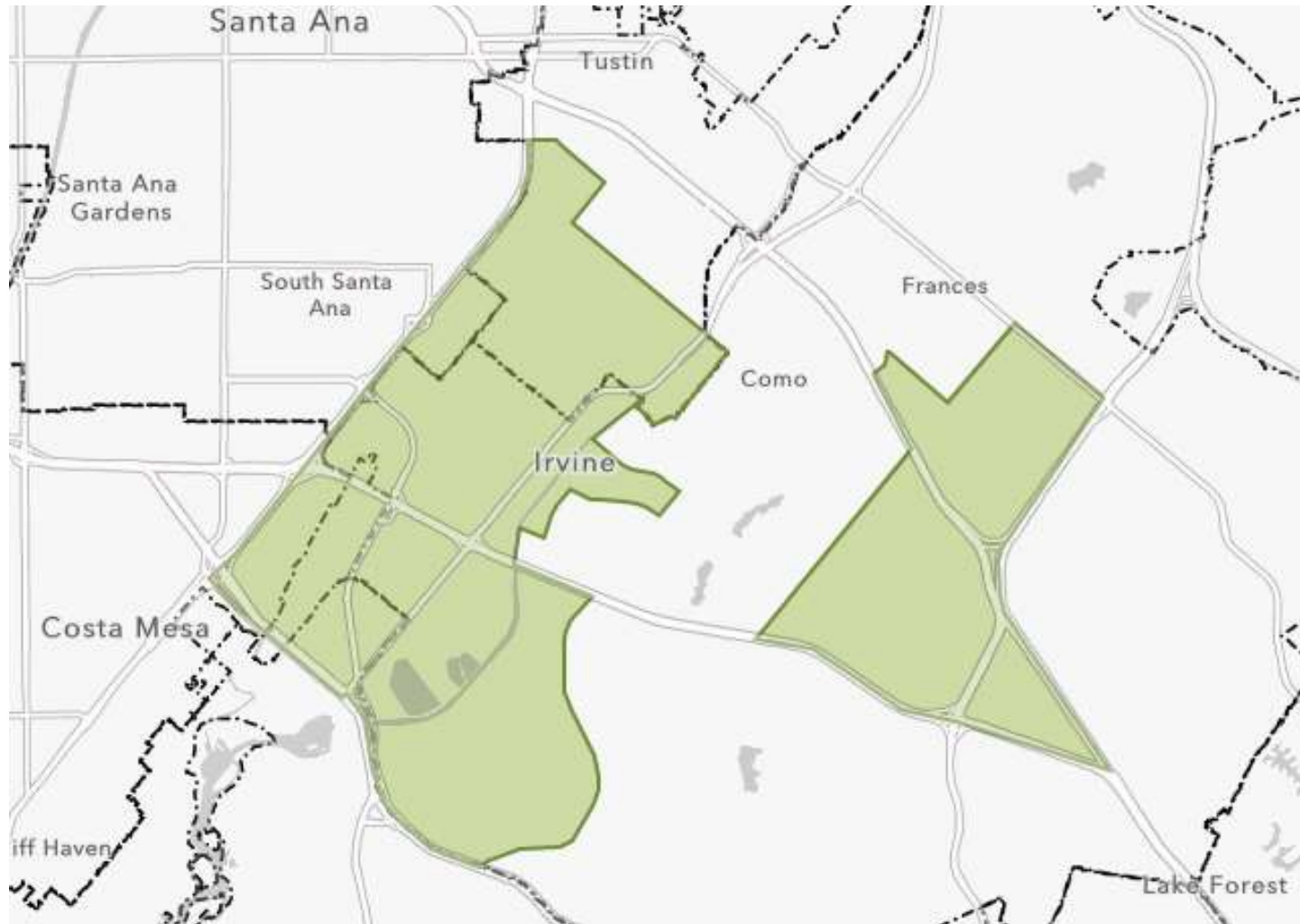


| Zone | City | FID | GEOID | Tract label | Population | CA HTC Index | Top Non-English Languages (%) | | | | | |
|------|-----------|-----|------------|---------------------|------------|--------------|-------------------------------|------|------------|------|------------|-----|
| 5 | Santa Ana | 169 | 6059074805 | Census Tract 748.05 | 5,700 | 89 | Spanish | 99.7 | Vietnamese | 0.3 | Arabic | 0 |
| 5 | Santa Ana | 423 | 6059074803 | Census Tract 748.03 | 8,937 | 62 | Spanish | 70.1 | Vietnamese | 28.3 | Chinese | 0.9 |
| 5 | Santa Ana | 451 | 6059074405 | Census Tract 744.05 | 6,187 | 93 | Spanish | 98 | Vietnamese | 1.4 | Korean | 0.4 |
| 5 | Santa Ana | 452 | 6059074806 | Census Tract 748.06 | 5,299 | 89 | Spanish | 93.4 | Vietnamese | 4.4 | Chinese | 1.4 |
| 5 | Santa Ana | 455 | 6059074901 | Census Tract 749.01 | 9,846 | 90 | Spanish | 95.4 | Chinese | 3 | Vietnamese | 1.1 |
| 5 | Santa Ana | 456 | 6059074902 | Census Tract 749.02 | 6,497 | 93 | Spanish | 100 | Chinese | 0 | Japanese | 0 |
| 5 | Santa Ana | 481 | 6059099247 | Census Tract 992.47 | 3,542 | 55 | Vietnamese | 66.4 | Spanish | 27.4 | Chinese | 3.8 |
| 5 | Santa Ana | 482 | 6059099248 | Census Tract 992.48 | 5,743 | 67 | Spanish | 72 | Vietnamese | 26.2 | Chinese | 1.6 |

| | | | | | | | | | | | | |
|---|-----------|------|------------|---------------------|--------|------------|------------|------|------------|------|-----------------------|-----|
| 5 | Santa Ana | 483 | 6059099249 | Census Tract 992.49 | 4,690 | 75 | Spanish | 78.8 | Vietnamese | 20.2 | Chinese | 1 |
| 5 | Santa Ana | 492 | 6059074406 | Census Tract 744.06 | 3,422 | 72 | Spanish | 98.5 | Mon | 1.5 | Chinese | 0 |
| 5 | Tustin | 493 | 6059074408 | Census Tract 744.08 | 6,327 | 78 | Spanish | 98.7 | Vietnamese | 1.3 | Arabic | 0 |
| 5 | Santa Ana | 505 | 6059074502 | Census Tract 745.02 | 5,631 | 67 | Spanish | 94.5 | Vietnamese | 3.6 | Mon | 1.3 |
| 5 | Santa Ana | 506 | 6059075002 | Census Tract 750.02 | 8,022 | 112 | Spanish | 91.9 | Chinese | 4.9 | Vietnamese | 2.3 |
| 5 | Santa Ana | 507 | 6059075003 | Census Tract 750.03 | 7,205 | 100 | Spanish | 98 | Vietnamese | 1.4 | Other Indic languages | 0.6 |
| 5 | Santa Ana | 625 | 6059075004 | Census Tract 750.04 | 5,344 | 100 | Spanish | 100 | Chinese | 0 | Japanese | 0 |
| 5 | Santa Ana | 703 | 6059074501 | Census Tract 745.01 | 7,481 | 94 | Spanish | 96.1 | Mon | 3.5 | Vietnamese | 0.3 |
| 5 | Santa Ana | 3155 | 6059074108 | Census Tract 741.08 | 5,002 | 48 | Spanish | 96.9 | Vietnamese | 3.1 | Arabic | 0 |
| 5 | Santa Ana | 3156 | 6059074109 | Census Tract 741.09 | 3,536 | 67 | Spanish | 83.6 | Vietnamese | 5.9 | Laotian | 3.1 |
| 5 | Santa Ana | 3162 | 6059074200 | Census Tract 742 | 9,575 | 51 | Spanish | 98.3 | Tagalog | 1.4 | Other PI languages | 0.3 |
| 5 | Santa Ana | 3229 | 6059074004 | Census Tract 740.04 | 8,555 | 48 | Spanish | 73.5 | Vietnamese | 14.3 | Tagalog | 7.4 |
| 5 | Santa Ana | 3230 | 6059074005 | Census Tract 740.05 | 7,955 | 64 | Spanish | 86.5 | Vietnamese | 12 | Japanese | 0.9 |
| 5 | Santa Ana | 3231 | 6059074006 | Census Tract 740.06 | 5,590 | 56 | Spanish | 89.9 | Vietnamese | 3.8 | Chinese | 1.7 |
| 5 | Santa Ana | 3232 | 6059074102 | Census Tract 741.02 | 6,653 | 60 | Spanish | 89.3 | Vietnamese | 7.1 | Chinese | 1.6 |
| 5 | Santa Ana | 3233 | 6059074103 | Census Tract 741.03 | 4,923 | 50 | Spanish | 95.6 | Vietnamese | 3.2 | Other PI languages | 0.8 |
| 5 | Santa Ana | 3300 | 6059089001 | Census Tract 890.01 | 7,696 | 57 | Vietnamese | 60 | Spanish | 36.5 | Chinese | 3 |
| 5 | Santa Ana | 3313 | 6059074601 | Census Tract 746.01 | 7,862 | 69 | Spanish | 98.2 | Laotian | 0.9 | Vietnamese | 0.5 |
| 5 | Santa Ana | 3314 | 6059075100 | Census Tract 751 | 10,050 | 78 | Spanish | 91.6 | Korean | 6.3 | Chinese | 0.6 |
| 5 | Santa Ana | 3315 | 6059075201 | Census Tract 752.01 | 6,417 | 68 | Spanish | 92.8 | Vietnamese | 6.1 | Other PI languages | 0.8 |
| 5 | Santa Ana | 3316 | 6059075202 | Census Tract 752.02 | 5,510 | 57 | Spanish | 95.6 | Vietnamese | 2.1 | Thai | 1.3 |
| 5 | Santa Ana | 3395 | 6059074701 | Census Tract 747.01 | 8,599 | 68 | Spanish | 91.6 | Vietnamese | 6.7 | Chinese | 1.7 |
| 5 | Santa Ana | 3396 | 6059074702 | Census Tract 747.02 | 6,163 | 65 | Spanish | 96.1 | Chinese | 2.5 | Vietnamese | 1.1 |
| 5 | Santa Ana | 3409 | 6059074602 | Census Tract 746.02 | 8,087 | 71 | Spanish | 98.9 | Mon | 1.1 | Chinese | 0 |
| 5 | Santa Ana | 3410 | 6059074802 | Census Tract 748.02 | 6,810 | 74 | Spanish | 90.7 | Vietnamese | 9.3 | Arabic | 0 |
| 5 | Santa Ana | 3447 | 6059089004 | Census Tract 890.04 | 7,422 | 72 | Spanish | 57.5 | Vietnamese | 34.1 | Laotian | 5.1 |
| 5 | Santa Ana | 3450 | 6059089104 | Census Tract 891.04 | 6,150 | 84 | Spanish | 71.8 | Vietnamese | 25.6 | Mon | 2.3 |
| 5 | Santa Ana | 3451 | 6059089105 | Census Tract 891.05 | 6,543 | 93 | Spanish | 91.4 | Vietnamese | 7 | Chinese | 1.5 |
| 5 | Tustin | 3523 | 6059075507 | Census Tract 755.07 | 5,556 | 48 | Spanish | 55 | Korean | 11 | Other PI languages | 6.8 |
| 5 | Tustin | 3525 | 6059075514 | Census Tract 755.14 | 3,858 | 79 | Spanish | 85.8 | Tagalog | 3.7 | Vietnamese | 3.4 |
| 5 | Santa Ana | 3540 | 6059099202 | Census Tract 992.02 | 8,430 | 62 | Spanish | 48.9 | Vietnamese | 42.2 | Chinese | 3.5 |
| 5 | Santa Ana | 3548 | 6059074003 | Census Tract 740.03 | 4,311 | 68 | Spanish | 86.1 | Russian | 2.4 | Persian | 2.1 |
| 5 | Santa Ana | 3603 | 6059074801 | Census Tract 748.01 | 6,568 | 76 | Spanish | 97.7 | Vietnamese | 1.6 | Japanese | 0.4 |
| 5 | Santa Ana | 3686 | 6059074300 | Census Tract 743 | 4,163 | 68 | Spanish | 99.7 | Vietnamese | 0.3 | Arabic | 0 |
| 5 | Santa Ana | 3687 | 6059074403 | Census Tract 744.03 | 6,023 | 99 | Spanish | 95.7 | Vietnamese | 1.7 | Mon | 1.4 |
| 5 | Santa Ana | 6548 | 6059074107 | Census Tract 741.07 | 6,811 | 52 | Spanish | 68.2 | Vietnamese | 14.1 | Other Indic languages | 6.6 |
| 5 | Tustin | 6765 | 6059074407 | Census Tract 744.07 | 5,642 | 81 | Spanish | 94.6 | Vietnamese | 1.2 | Korean | 1 |
| 5 | Tustin | 6792 | 6059075512 | Census Tract 755.12 | 4,135 | 67 | Spanish | 74.1 | Chinese | 6.7 | Other Asian languages | 5 |

Outreach Zone 6

HTC Population: 99,853

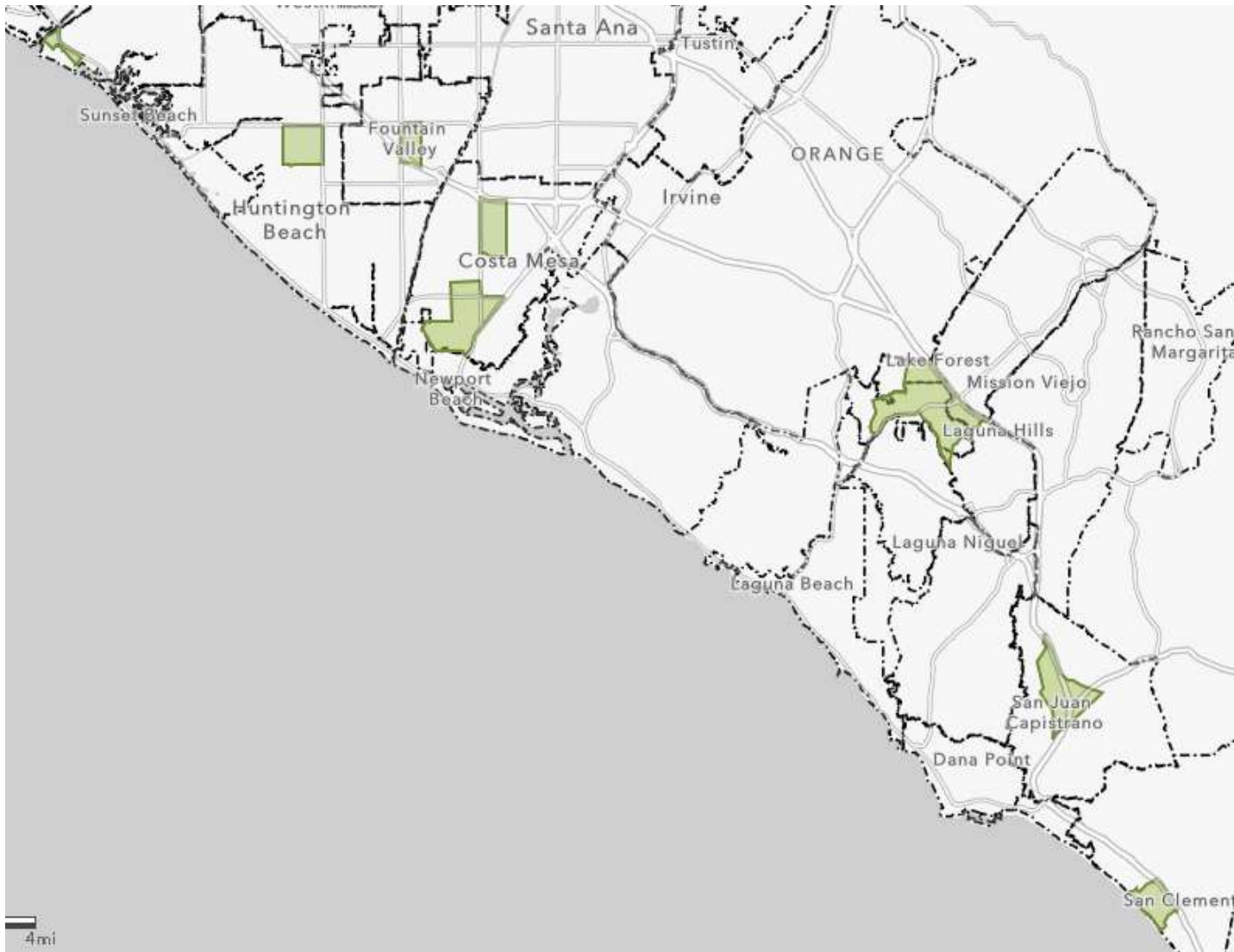


| Zone | City | FID | GEOID | Tract label | Population | CA HTC Index | Top Non-English Languages (%) | | | | | |
|------|--------|-----|------------|---------------------|------------|--------------------|-------------------------------|------|---------|------|----------|------|
| 6 | Irvine | 185 | 6059062610 | Census Tract 626.10 | 9,192 | 63 | Chinese | 27.9 | Persian | 23.9 | Korean | 12.2 |
| 6 | Irvine | 745 | 6059052517 | Census Tract 525.17 | 12,535 | 50 | Chinese | 32.8 | Korean | 17.4 | Japanese | 13.1 |
| 6 | Irvine | 748 | 6059052518 | Census Tract 525.18 | 5,645 | 76 | Arabic | 29 | Korean | 18.3 | Persian | 17 |
| 6 | Irvine | 751 | 6059052521 | Census Tract 525.21 | 5,195 | 73 | Japanese | 20.2 | Chinese | 18.7 | Persian | 18.1 |
| 6 | Irvine | 860 | 6059062611 | Census Tract 626.11 | 4,643 | 72 | Chinese | 34.6 | Persian | 14.1 | Korean | 12.8 |

| | | | | | | | | | | | | |
|---|--------|------|------------|---------------------|--------|-----------|---------|------|---------|------|------------|------|
| 6 | Irvine | 862 | 6059062614 | Census Tract 626.14 | 17,232 | 64 | Chinese | 41.9 | Spanish | 19.8 | Korean | 17.8 |
| 6 | Irvine | 916 | 6059062627 | Census Tract 626.27 | 3,731 | 72 | Chinese | 35 | Korean | 21.4 | Persian | 20.8 |
| 6 | Irvine | 3526 | 6059075515 | Census Tract 755.15 | 18,827 | 64 | Spanish | 49.7 | Chinese | 14.8 | Vietnamese | 14.5 |
| 6 | Irvine | 6546 | 6059052418 | Census Tract 524.18 | 19,452 | 51 | Korean | 33.1 | Chinese | 27.8 | Persian | 11.4 |
| 6 | Irvine | 6760 | 6059062626 | Census Tract 626.26 | 3,401 | 71 | Korean | 30.8 | Persian | 23.9 | Arabic | 11.3 |

Outreach Zone 7

HTC Population: 86,558



| Zone | City | FID | GEOID | Tract label | Population | CA HTC Index | Top Non-English Languages (%) | | | | | |
|------|--------------|-----|------------|---------------------|------------|--------------------|-------------------------------|------|------------|------|--------------------|------|
| 7 | Laguna Hills | 171 | 6059062647 | Census Tract 626.47 | 4,447 | 47 | Spanish | 51.9 | Chinese | 15 | Korean | 9.3 |
| 7 | Costa Mesa | 229 | 6059063808 | Census Tract 638.08 | 6,093 | 70 | Spanish | 97.2 | Vietnamese | 0.9 | Other PI languages | 0.9 |
| 7 | Laguna Hills | 865 | 6059062622 | Census Tract 626.22 | 3,889 | 49 | Korean | 43.2 | Persian | 17.2 | Chinese | 13.7 |

| | | | | | | | | | | | | |
|---|---------------------|------|------------|---------------------|-------|-----------|------------|------|------------|------|--------------------|------|
| 7 | Laguna Woods | 984 | 6059062646 | Census Tract 626.46 | 3,731 | 54 | Chinese | 34.7 | Korean | 13.7 | Persian | 10.5 |
| 7 | San Clemente | 1029 | 6059042107 | Census Tract 421.07 | 4,492 | 60 | Spanish | 98.1 | Tagalog | 1.1 | Thai | 0.8 |
| 7 | San Clemente | 1030 | 6059042108 | Census Tract 421.08 | 4,880 | 51 | Spanish | 96.9 | Portuguese | 3.1 | Japanese | 0 |
| 7 | San Juan Capistrano | 3005 | 6059042312 | Census Tract 423.12 | 9,900 | 57 | Spanish | 97.6 | Chinese | 0.9 | Other Indo | 0.7 |
| 7 | Costa Mesa | 3011 | 6059063604 | Census Tract 636.04 | 4,298 | 65 | Spanish | 87.2 | Korean | 5.1 | Chinese | 4.5 |
| 7 | Costa Mesa | 3187 | 6059063902 | Census Tract 639.02 | 7,090 | 54 | Spanish | 65.8 | Japanese | 13.8 | Other PI languages | 9.7 |
| 7 | Costa Mesa | 3609 | 6059063605 | Census Tract 636.05 | 5,445 | 73 | Spanish | 99 | Arabic | 1 | Chinese | 0 |
| 7 | Costa Mesa | 3610 | 6059063701 | Census Tract 637.01 | 5,717 | 77 | Spanish | 93.7 | Vietnamese | 2 | Mon | 1.2 |
| 7 | Costa Mesa | 3611 | 6059063702 | Census Tract 637.02 | 5,926 | 47 | Spanish | 89.9 | Other Indo | 3.1 | Tagalog | 2.5 |
| 7 | Seal Beach | 3656 | 6059099512 | Census Tract 995.12 | 3,186 | 48 | Spanish | 39.4 | German | 24.8 | Vietnamese | 17.5 |
| 7 | Laguna Woods | 4175 | 6059062648 | Census Tract 626.48 | 2,677 | 48 | Korean | 56.5 | Chinese | 22 | Hungarian | 11.3 |
| 7 | Fountain Valley | 6589 | 6059099251 | Census Tract 992.51 | 5,949 | 51 | Vietnamese | 56 | Arabic | 12.4 | Portuguese | 11.7 |
| 7 | Huntington Beach | 6685 | 6059099402 | Census Tract 994.02 | 8,838 | 80 | Spanish | 93.9 | Vietnamese | 3.3 | Chinese | 1 |