

Supp Nguyen 2-25-14 #41

COMPOSITION OF CALOPTIMA BOARD OF DIRECTORS

Previous Board (2011) - 9 members	Current Board (2012) - 11 members
Orange County Board of Supervisors Representative	Orange County Board of Supervisors Representative
Director, Orange County Health Care Agency	Director, Orange County Health Care Agency
Provider: Physician/Physician Network/Hospital Representative	Provider: Physician
Provider: Physician/Physician Network/Hospital Representative	Provider: Physician Network
Provider: Physician/Physician Network/Hospital Representative	Provider: Hospital Representative
Consumer/Non-Profit	Consumer/Non-Profit
Consumer/Non-Profit	Consumer/Community Clinic
Consumer/Non-Profit	Consumer
For-Profit/ Non-Profit	For-Profit (Business)
	Director, Orange County Social Services Agency
	General Public Representative

Before

After

PAID \$1 MILLION ANNUALLY FOR OFFICE SPACE THAT REMAINED VACANT

✓ ENHANCED FINANCIAL REPORTING: BOARD RECEIVES MONTHLY REPORT THAT INCLUDES LEASED AND VACANT PROPERTIES

SPENT \$6.6 MILLION TO LEASE AND REPAIR A BUILDING, assessed at only \$1.1 million

✓ ENHANCED FINANCIAL REPORTING: BOARD RECEIVES MONTHLY REPORT THAT INCLUDES LEASED AND VACANT PROPERTIES

INAPPROPRIATELY PAID 40% OF VENDORS WITHOUT A CONTRACT

✓ ESTABLISHED MONITORING PROCESS TO PERIODICALLY REVIEW PAYMENTS FOR VENDORS INAPPROPRIATELY PAID OUTSIDE A CONTRACT.

CHAIR AND VICECHAIR HIRED OUTSIDE LEGAL COUNSEL WITHOUT APPROVAL OF THE BOARD

✓ ALL CONTRACTS FOR OUTSIDE LEGAL COUNSEL MUST BE APPROVED BY BOARD, REGARDLESS OF DOLLAR AMOUNT

Before

After

COMPLIANCE DIRECTOR REPORTS TO CEO

✓ ELEVATED COMPLIANCE DIRECTOR TO AN EXECUTIVE LEVEL THAT REPORTS TO CEO & BOARD OF DIRECTORS

COMPLIANCE DEPARTMENT: 9 EMPLOYEES

✓ COMPLIANCE DEPARTMENT: 18 EMPLOYEES *

NON-EXECUTIVE LEVEL COMPLIANCE OFFICER

✓ HIRED NEW EXECUTIVE LEVEL COMPLIANCE OFFICER

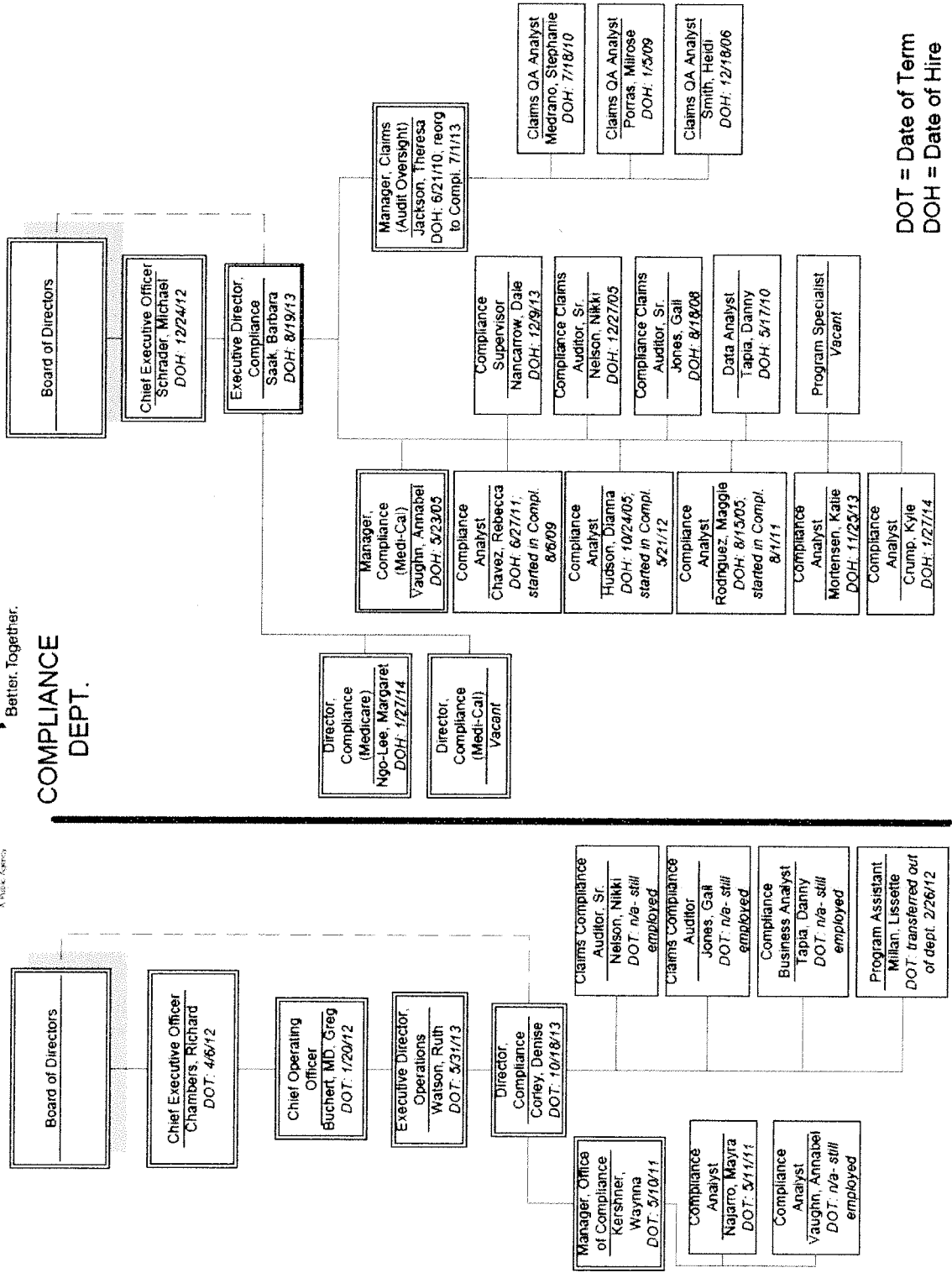
* See next page for a chart of the Compliance Department Structure in 2011 and in 2014.



CalOptima
Better. Together.

January 31, 2011

January 31, 2014



DOT = Date of Term
DOH = Date of Hire

ACHIEVEMENTS

- ✓ MEMBER SATISFACTION OF CALOPTIMA'S LARGEST POPULATION INCREASED FROM 77.4% TO 80.3% in 2012
- ✓ HONORED WITH AN HONORABLE MENTION HEDIS AWARD IN 2012
- ✓ 3.5 STAR RATING FROM CMS FOR ONECARE'S OUTCOMES (2ND HIGHEST IN STATE)
- ✓ 4.0 STAR RATING FROM CMS FOR ONECARE'S PHARMACY MANAGER
- ✓ CONTINUE TO SPEND 95 CENTS OF EVERY DOLLAR RECEIVED ON PATIENT CARE
- ✓ ADDED 3 ADDITIONAL ONECARE HEALTH NETWORKS, INCREASING THE NUMBER OF PHYSICIANS & SPECIALISTS BY 880
- ✓ MEMBERS CAN SWITCH PRIMARY CARE PROVIDER AT ANY TIME , AS OPPOSED TO WAITING ONE YEAR.