



# Memorandum

**Date:** 11/15/21  
**To:** Clerk of the Board  
**From:** Katrina Foley, Second District Supervisor  
**Contact:** Nick Anas, Chief of Staff  
**Re:** Comments on Revision to Proposal 2A (2A-1)

RECEIVED  
2021 NOV 15 PM 2:52  
CLERK OF THE BOARD  
ORANGE COUNTY  
BOARD OF SUPERVISORS

Supervisor Katrina Foley offered edits to Proposal 2A (2A-1) These revisions were based on consistent methodology and reflect input from community members.

## **Proposal 2A-1 meets the criteria for compliance with state and federal law**

1. Proposal 2A-1 complies with the Federal Voting Rights Act by creating a Latino Minority Majority District in Central Orange County.
2. Proposal 2A- 1 creates a Non-Hispanic Asian plurality District in Western Orange County.
3. Proposal 2A -1 does not bypass areas of population to favor more distant populations
4. Proposal 2A-1 is contiguous and compact.
5. Proposal 2A-1 unites communities of interests (social, cultural, economic, environmental and educational).
6. Proposal 2A-1 reduces city splits and only considers city splits when bringing together a community of interest or balancing population.
7. Proposal 2A-1 was not drawn for purposes of favoring or discriminating against political parties, incumbents, or political candidates.

## **District 1**

District 1 creates a West Orange County based Asian plurality district for the first time in Orange County history. The submitter of Proposal 2 clearly sought to create such a district and we looked at it closely to improve upon this concept. The district has a more than 40% Asian population and just under a 40% Asian Citizen Voting Age Population (CVAP), the highest of any Proposal being considered as confirmed in Attachment A. This Proposal creates the strongest and contiguous Asian district of all the Proposals submitted.

District 1 unites the Little Saigon communities of Westminster, Fountain Valley, Midway City, Garden Grove (west of Harbor Blvd. and West St.), and Santa Ana (west of Harbor Blvd.). In addition, the district unites the Korean communities in Buena Park, La Palma, La Habra (south of Imperial Hwy.) and Fullerton (north of Malvern and Bastanchury).

To complete the district, Cypress, Stanton and Anaheim (west of the county island/Gilbert St.) are incorporated. These areas have emerging Asian populations where Vietnamese, Korean and a growing Filipino community reside with a shared connection to the rest of the district.

## **District 2**

Costa Mesa and Irvine (South of SR-5) are united. According to the Orange County Asian and Pacific Islander Community Alliance (OCAPICA), the growth of Irvine was fueled by immigrant communities that face similar needs of socioeconomically disadvantaged communities in Costa Mesa. Irvine and Costa Mesa share a Marshallese community of interest that testified during the public outreach.

Irvine, Costa Mesa, and Newport Beach share impacts of the County operated John Wayne Airport.

The Coastal communities of Seal Beach, Huntington Beach, Newport Beach, and Laguna Beach are united into one district as a Coastal Community of interest. Laguna Beach faces common coastal issues shared more so with Newport Beach and Huntington Beach more than the other more southern coastal communities as most recently highlighted in the oil spill.

The City of Seal Beach traditionally shares districts with the City of Los Alamitos and the unincorporated community of Rossmoor. This Proposal keeps those communities united in one district.

Laguna Beach, Newport Beach and Huntington Beach are all cities that operate their own Fire Departments, Lifeguards and Marine Safety Divisions who collaborate and train together, as well as provide mutual aide.

Laguna Beach, Newport Beach, and Irvine are united by the Laguna Canyon Wilderness Park operated by OC Parks.

Costa Mesa, Huntington Beach and Newport Beach all border Banning Ranch and share interest in the plans for future improvements there. Costa Mesa & Huntington Beach partner on the Santa Ana River Trail as well as Fairview and Talbert Parks for recreation & maintenance services as well as security, safety, and prevention of homelessness. The outlets of the Santa Ana River at Talbert Marsh and the County beach also connects Costa Mesa, Huntington Beach, and Newport Beach.

Attachment C shows correspondence from cities that were considered in the development of this Proposal.

**District 3**

This District remains anchored by the Cleveland National Forest and Chino Hills State Park.

The communities of Brea, Yorba Linda, Anaheim Hills, Orange, North Tustin, North Irvine, and unincorporated areas such as Silverado and Trabuco Canyon face similar issues related to open space, planning, and wildfires.

Irvine is split north of the 5 freeway to SR-133 and faces similar issues to the regions in other Proposed District 3 communities, such as neighboring Tustin.

The communities of Brea, La Habra, and Placentia traditionally share districts with the communities of Anaheim (east of the SR-57) and Yorba Linda.

Imperial Highway (SR-90) from La Habra to Anaheim Hills and SR-241 are regional connectors for that portion of Orange County.

**District 4**

District 4 creates the Voting Rights Act (VRA) Section 2 mandated Supervisorial District for the Hispanic community in central Orange County for the first time in Orange County. The district contains the largest continuous Hispanic community by including all of Santa Ana west of Harbor Blvd., Anaheim roughly between Gilbert St. and SR 57, Garden Grove (east of Harbor Blvd. and West St.), Orange (west of SR 57) and Fullerton (south of Malvern and Bastanchury).

Looking at a map of where the growing Hispanic community of Orange County is located, you can see one continuous area from Santa Ana going north through east Garden Grove connecting to central Anaheim and southern Fullerton. This unites this community where other proposals split them up and try to connect them to other areas with large Hispanic populations, where there may not be a common geographic connection, which is discouraged under the CA Fair Maps Act.

District 4 creates the fairest community of interest unifying proposal for the Section 2 district.

**District 5**

The cities of Southern Orange County have traditionally remained intact in Supervisorial Districts. The relationship with those, and other South County cities and the County of Orange is unique. They are, relatively, recently incorporated communities that contract with the Orange County Sheriff's Department and Orange County Fire Authority for vital services.

The City of Laguna Niguel submitted a letter to the County of Orange requesting that communities including Laguna Niguel, Laguna Hills, and other South Orange County cities mostly remain together in the same Supervisorial District.

)  
)

The portions of Irvine in this District are South of SR-133 (and North of the SR-5) are growing and is connected to South County communities like Lake Forest

The Portions of Irvine South of SR-133 and South of SR-5) are growing and are connected to South County communities such as Laguna Hills and Aliso Viejo.

This proposal unites South County and establishes clear district boundaries at SR-133 and the Aliso and Woods Canyons Regional Park.

Proposal 2A-1 is the only map that keeps most of South County united. Only the City of Laguna Beach, which sent a letter (Attachment C), is not in this District.

**Proposal 2A-1** creates an inclusive, equitable, and defensible Voting Rights Act and Fair Maps Act compliant map that ensures all regions of Orange County are fairly represented.

**Attached for reference**

- (A) Current Board of Supervisors District Boundaries
- (B) Proposal 2A-1 Map, Hispanic/Latino and Non-Hispanic Asian Total Population Maps, and comparison of all Proposals for top Hispanic/Latino and top Non-Hispanic Asian Districts.
- (C) Correspondence from cities that were taken into consideration when drafting this Proposal.
- (D) Draft Congressional, State Senate, and State Assembly Maps from California's Independent Redistricting Commission. In developing this Proposal, we took into consideration the deliberations made by the independent and non-partisan commission in uniting communities of interest.

**ATTACHMENTS (s)**

Attachment A: Current Orange County Board of Supervisors District Boundaries

Attachment B: Proposal 2A, Latino & Non-Hispanic Asian Total Population/CVAP Maps Latino & Non-Hispanic Asian comparison with other Proposals

Attachment C: Correspondence from the cities of Costa Mesa, Huntington Beach, , Laguna Beach, and Laguna Niguel

Attachment D: Legislative Maps from California's Independent Redistricting Commission



# Current County of Orange Supervisorial Districts

A

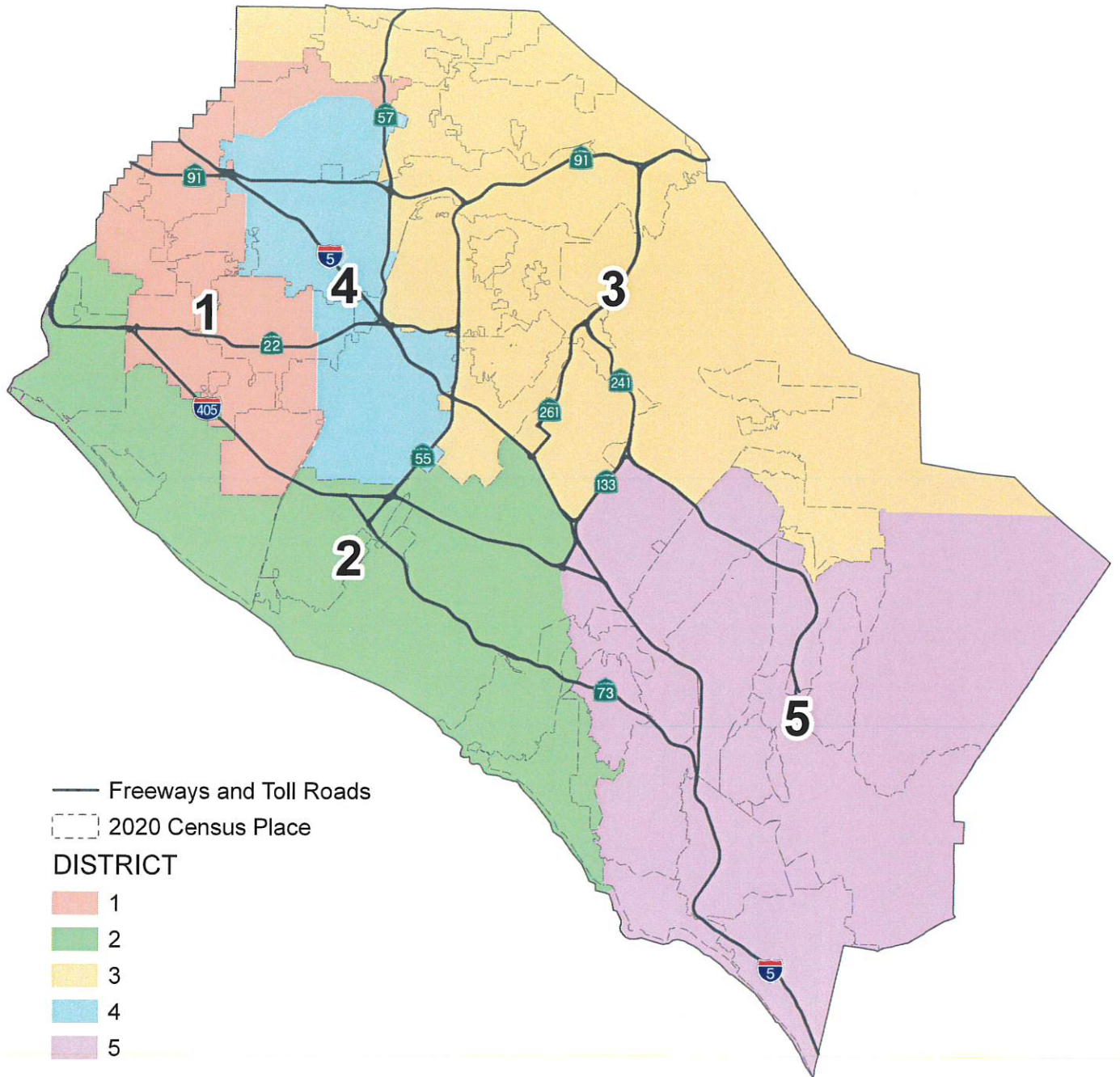


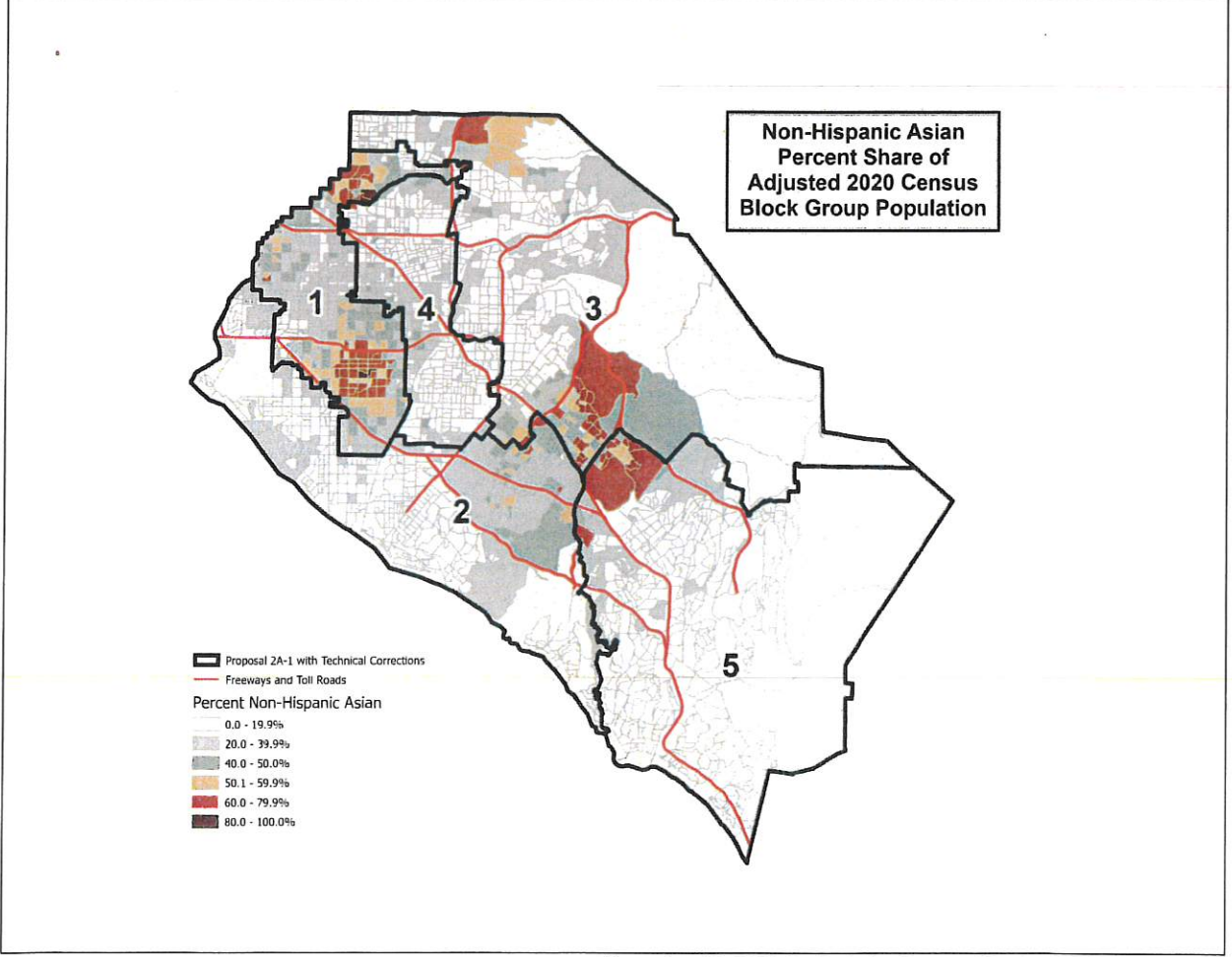
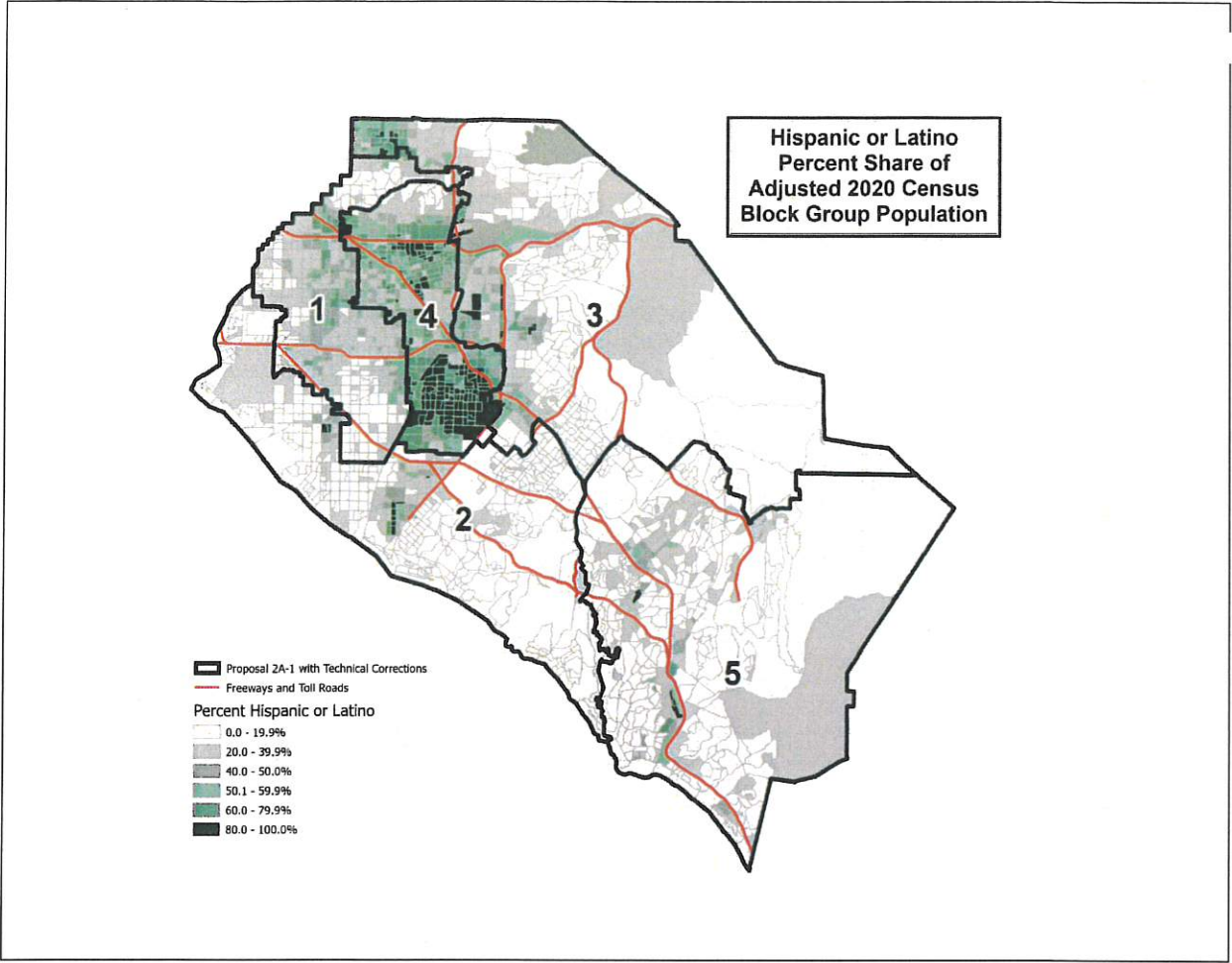


B

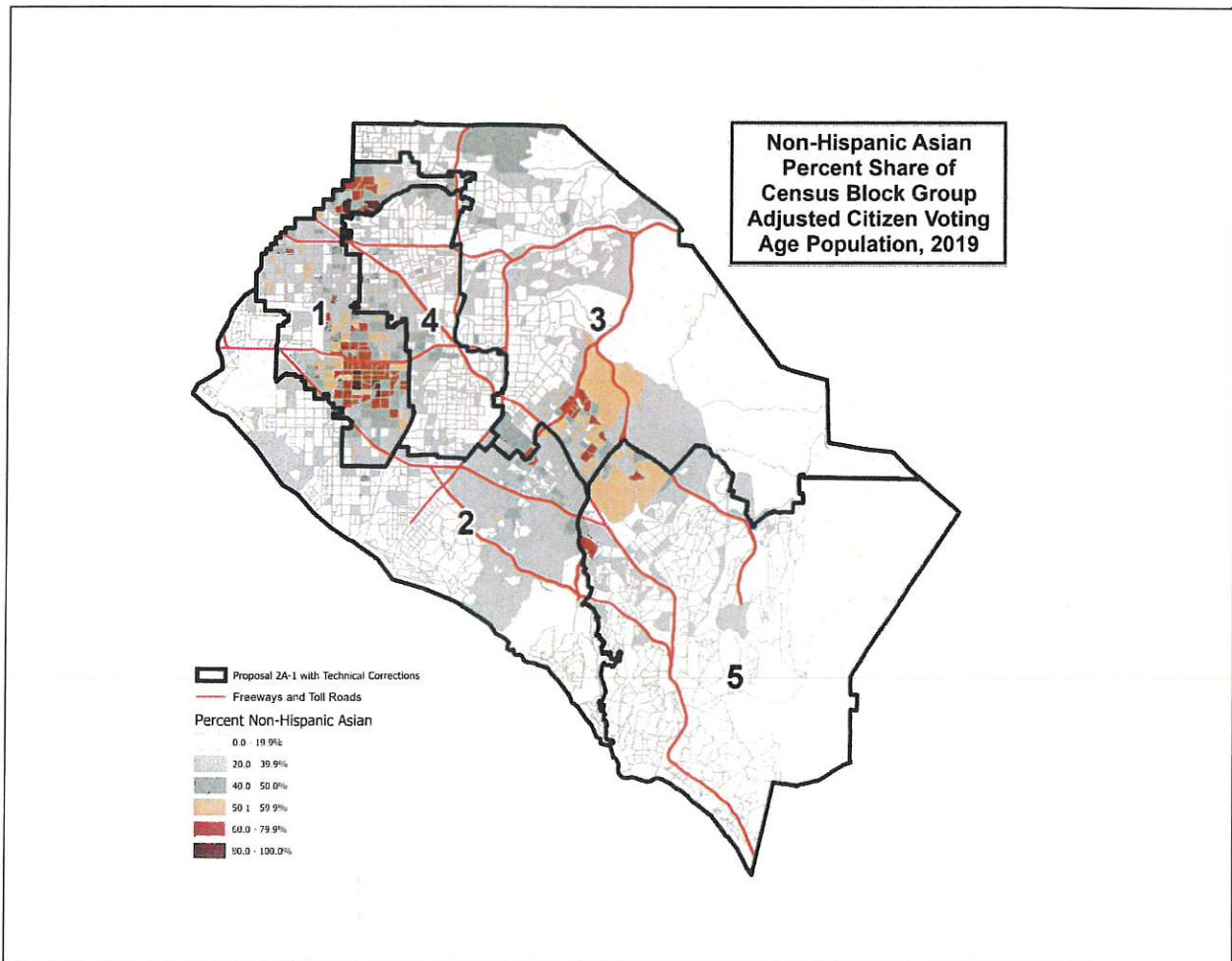
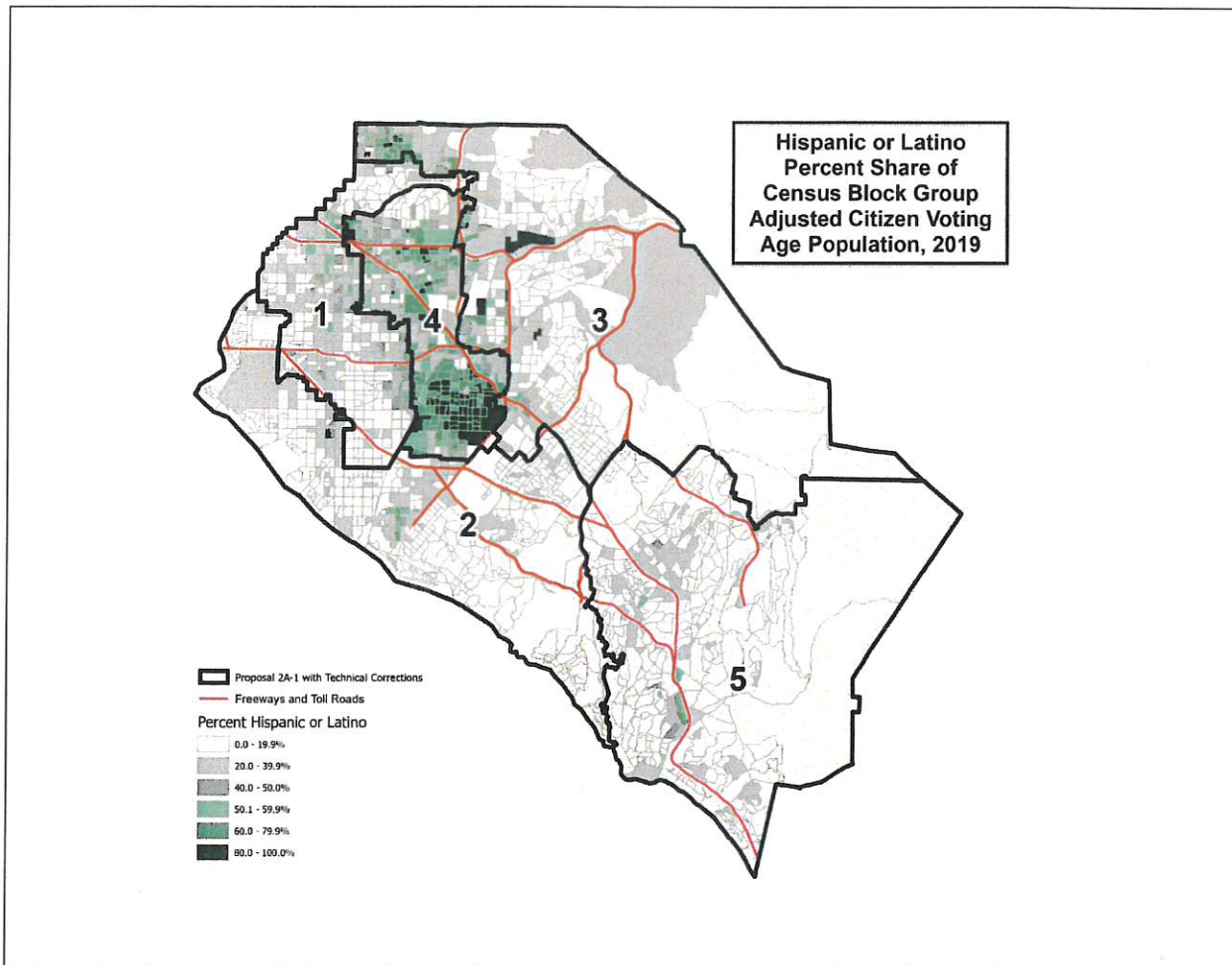
# County of Orange 2021 Redistricting

## Proposal 2A-1 Map (Technical Corrections)













<b>Proposal</b>	<b>CVAP Hispanic/Latino Population <i>Top District</i></b>	<b>CVAP Non- Hispanic Asian Population <i>Top District</i></b>
Current Board Map	41.4%	32.9%
2	53.6%	36.8%
2A	53.6%	37.4%
2A-1	53.2%	39.8%
4	51.1%	34.6%
4A	51.1%	34.8%
4B	53%	34.7%
4C	49.8%	30.2%
4C-1	52.5%	28.4%
5	53.5%	29.5%
5A	52.1%	29.5%
5A-1	52.1%	29.5%
5B	53.5%	29.5%
5B-1	53.5%	29.55%

<b>Proposal</b>	<b>Total Latino Population <i>Top District</i></b>	<b>Total Non-Hispanic Asian Population <i>Top District</i></b>
Current Board Map	55.0%	29.3%
2	67.9%	38.4%
2A	67.9%	39.2%
2A-1	67.4%	40.3%
4	66.1 %	35.7%
4A	66.2%	35.9%
4B	67.7%	35.8%
4C	64.6%	32.7%
4C-1	66.6%	30.5%
5	67.9%	32.2%
5A	66.8%	32.2%
5A-1	66.8%	32.2%
5B	67.9%	32.2%
5B-1	67.9%	32.2%

Source: County of Orange Supervisorial District Revised Proposals and Technical Corrections 11/16/21 - [www.ocgov.com/redistricting](http://www.ocgov.com/redistricting)

C



# CITY OF COSTA MESA

77 Fair Drive | P.O. Box 1200, Costa Mesa | California 92628-1200  
Phone 714.754.5285 | Fax 714.754.5330 | [www.costamesaca.gov](http://www.costamesaca.gov) | [john.stephens@costamesaca.gov](mailto:john.stephens@costamesaca.gov)

*From the Office of the Mayor*

November 1, 2021

The Honorable Andrew Do  
Chairman, First District  
County of Orange  
333 W Santa Ana Blvd  
Santa Ana, CA, 92701

The Honorable Donald P. Wagner  
Supervisor, Third District  
County of Orange  
333 W Santa Ana Blvd  
Santa Ana, CA, 92701

The Honorable Doug Chaffee  
Vice Chairman, Fourth District  
County of Orange  
333 W Santa Ana Blvd  
Santa Ana, CA, 92701

The Honorable Lisa A. Bartlett  
Supervisor, Fifth District  
County of Orange  
333 W Santa Ana Blvd  
Santa Ana, CA, 92701

The Honorable Katrina A. Foley  
Supervisor, Second District  
County of Orange  
333 W Santa Ana Blvd  
Santa Ana, CA, 92701

RE: County of Orange Re-Districting Proposals

Dear Chairman Do and Orange County Board of Supervisors,

As the County of Orange considers various proposals for redistricting, I write to respectfully request that the County reject proposals that will split the City of Costa Mesa into two supervisorial districts and instead adopt lines that keep Costa Mesa in one district. It is imperative that our communities maintain fair representation within this process.

On the county's website, there are currently eight redistricting map proposals that have been submitted for the County's consideration. Proposals one, two, three, and four would divide the City of Costa Mesa into two different supervisorial districts, which would dramatically shift voters to different election year cycles. Not only will the division of our city lead to fragmentation, but it will make it more difficult to keep our community together.

MAYOR John Stephens <i>At Large</i>	COUNCIL MEMBER Don Harper <i>District 1</i>	COUNCIL MEMBER Loren Gameros <i>District 2</i>	MAYOR PRO TEM Andrea Marr <i>District 3</i>	COUNCIL MEMBER Manuel Chavez <i>District 4</i>	COUNCIL MEMBER Arlis Reynolds <i>District 5</i>	COUNCIL MEMBER Jeffrey Harlan <i>District 6</i>
---	---	--	---	--	---	---

C

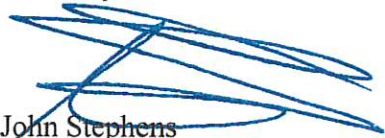
Keeping the City of Costa Mesa in one district will allow our county representatives to champion our issues, focus on funding priorities for our community, and provide a voice to our residents. To divide our city would be devastating to Costa Mesa.

According to the County's own redistricting criteria, it states that "...to the extent practicable, (2) the geographic integrity of local neighborhoods or communities shall be respected in a manner that minimizes its division, and (3) geographic integrity of a city shall be respected in a manner that minimizes its division." I ask that you and your colleagues on the Board of Supervisors adhere to this criterion and adopt lines that keep Costa Mesa wholly in one district, as it is currently.

Also, Costa Mesa should be included in the same district as our coastal neighbors, Newport Beach and Huntington Beach, because we not only share a border, but with Newport Beach we share a school district and our border with Huntington Beach touches county property such as Talbert Park and multiple flood channels.

Our city is a strong community with common interests that will only benefit from being represented in whole. It is critical that as we look ahead to the next 10 years, cities are kept together so that we can continue to work collaboratively with our county partners without being divided amongst multiple districts. I look forward to working with you on this important issue to ensure a favorable outcome for the City of Costa Mesa.

Sincerely,



John Stephens  
Mayor  
City of Costa Mesa

CC: Costa Mesa City Council  
Lori Ann Farrell Harrison, City Manager, City of Costa Mesa  
Kim Barlow, City Attorney, City of Costa Mesa



C

DRAFT

RESOLUTION NO. 2021-\_\_

**A RESOLUTION OF THE CITY COUNCIL OF THE CITY OF COSTA MESA, CALIFORNIA, OPPOSING ADOPTION OF ANY REDISTRICTING PLAN FOR THE COUNTY OF ORANGE WHICH SPLITS COSTA MESA INTO TWO DISTRICTS**

**THE CITY COUNCIL OF THE CITY OF COSTA MESA DOES HEREBY RESOLVE AS FOLLOWS:**

**WHEREAS**, the County of Orange is currently in the process of drawing new district boundaries for its five Supervisorial Districts as a result of the Decennial Census; and

**WHEREAS**, there has been minimal outreach to the public and no outreach to Orange County Cities to solicit input on communities of interest, draft maps, or otherwise to evaluate local district lines and how they reflect communities of interest in cities like Costa Mesa which vote by district; and

**WHEREAS**, California Elections Code section 21500 (c)(2) provides: "To the extent practicable, the geographic integrity of any local neighborhood or local community of interest shall be respected in a manner that minimizes its division. A 'community of interest' is a population that shares common social or economic interests that should be included within a single supervisorial district for purposes of its effective and fair representation. Communities of interest do not include relationships with political parties, incumbents, or political candidates; and

**WHEREAS**, California Elections Code section 21500 (c)(3) provides: "To the extent practicable, the geographic integrity of a city or census designated place shall be respected in a manner that minimizes its division"; and

**WHEREAS**, California Elections Code section 21500 (d) provides; "The board shall not adopt supervisorial district boundaries for the purpose of favoring or discriminating against a political party"; and

**WHEREAS**, the Board of Supervisors has not obtained draft maps from a professional demographer to consider in its required redistricting; and

**WHEREAS**, the Board of Supervisors has received and considered only eight publicly submitted maps and proposed modifications to three of them submitted by Board Members in connection with the redistricting of the County; and

**WHEREAS**, of the maps the Board of Supervisors has selected for further consideration in the redistricting process, many of them divide the City of Costa Mesa into different districts, completely reconfiguring the district lines of the region in which Costa Mesa is located in the County; and

**WHEREAS**, many of the maps the Board of Supervisors has selected for further consideration in the redistricting process split multiple cities into different districts, including Costa Mesa, thus violating the statutory requirements that communities of interest should be respected and that the geographic integrity of a city shall be respected in a manner that minimizes its division; and

**WHEREAS**, many of the maps the Board of Supervisors has selected for further consideration in the redistricting process, fail to respect the geographical boundaries of Costa Mesa's voting districts, splitting two or three of Costa Mesa's six voting districts into separate supervisorial districts; and

**WHEREAS**, the maps which divide Costa Mesa into multiple districts constitute "cracking" of Costa Mesa's voters, spreading like minded voters among several districts so that their vote is diluted; and

**WHEREAS**, only two of the current maps the Board of Supervisors are considering in the redistricting process keep the City of Costa Mesa in the same district as both the majority of Huntington Beach and Newport Beach, its two nearest neighbors, both geographically and socio-economically, with which it has shared legislators for decades, and with which Costa Mesa shares or borders upon numerous regional assets such as Banning Ranch and both Newport Boulevard and the 16th Street corridor, contractual relationships such as Costa Mesa and Huntington Beach for helicopter services, and Costa Mesa and Newport Beach for the Bridge Shelter, service districts such as Mesa Water District, and educational facilities through the Newport-Mesa Unified School District, completely reconfiguring the district lines of the region in which Costa Mesa is located in the County; and

**WHEREAS**, many citizens have expressed concern that the proposed maps may cause the Board of Supervisors to adopt supervisorial district boundaries for the purpose of favoring or discriminating against a political party, which is impermissible;

)  
)

)  
)

**NOW, THEREFORE, IT IS RESOLVED** by the City Council of the City of Costa Mesa that the City of Costa Mesa opposes adoption of any redistricting plan for the County of Orange which splits Costa Mesa into more than one district and separates it from its closest geographical and demographically similar neighbors.

**PASSED, APPROVED AND ADOPTED this 16th day of November, 2021:**

\_\_\_\_\_  
John Stephens, Mayor

ATTEST:

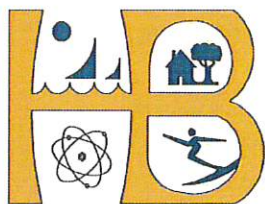
APPROVED AS TO FORM:

\_\_\_\_\_  
Brenda Green, City Clerk

\_\_\_\_\_  
Kimberly Hall Barlow, City Attorney



C



# City of Huntington Beach

2000 MAIN STREET

CALIFORNIA 92648

**Kim Carr**  
**Mayor**

August 18, 2021

Supervisor Katrina Foley  
Second District  
333 W Santa Ana Blvd  
Santa Ana, CA, 92701

**RE: CITY OF HUNTINGTON BEACH REDISTRICTING**

Dear Supervisor Foley:

As the County of Orange enters into the line drawing phase of the redistricting process, we write to ask that the City of Huntington Beach remain in a District with our coastal city neighbors in order to maintain our community of interest.

Coastal cities have unique needs and challenges related to coastal resilience, adaptation to climate change, and managing our coastal resources. Further, issues with beach erosion and water quality directly impact our neighbors to the south and we are directly impacted by our neighbors to the north. It is critical that as we look ahead to the next 10 years, our cities are kept together so that we can continue to work collaboratively with our County, as opposed to being divided up amongst multiple districts.

Division of our coastal cities will only lead to fragmentation. Keeping our communities together will allow our representatives to champion our issues, focus on funding priorities for our coastal communities, and provide a voice to our residents – three of the core considerations of how redistricting impacts us. Coastal cities are a strong community of interest with common interests that will benefit from being districted together.

Sincerely,

Kim Carr  
Mayor  
City of Huntington Beach

cc: Chairman Andrew Do  
Vice Chairman Doug Chaffee  
Supervisor Donald Wagner  
Supervisor Lisa Bartlett

C



November 12, 2021

The Honorable Andrew Do  
Chairman, Orange County Board of Supervisors  
333 W. Santa Ana Boulevard  
Santa Ana, California 92701

**RE: Letter of Support for Including the City of Laguna Beach with other Coast Communities of Interest in the 2021 Redistricting Plan**

Dear Chairman Do:

The City of Laguna Beach City Council voted unanimously on November 10, 2021, to communicate our desire to keep the City within a contiguous coastal community of interest to include Newport Beach, Costa Mesa, and portions, if not all, of Huntington Beach, and portions of Irvine.

We understand the final maps for consideration related to the potential Supervisorial districts are not yet set and may not reflect the three maps advanced at the November 2, 2021, Board of Supervisors' meeting. However, we believe that maintaining the entire City of Laguna Beach with our coastal neighbors and portions of Irvine, based on our shared interest in the Laguna Coast Wilderness Park and Laguna Canyon entrance, meets the five stated criteria followed for drawing boundaries. As evidenced by the recent Orange County oil spill, the coastal communities share a unique bond. This bond goes beyond concern for our ocean to similar shared interests from loud vehicle noise, impacts of tourism, water quality impacts from inland sources, and sea-level rise, to name a few.

The Board of Supervisors' consideration to keep Laguna Beach in the same supervisorial district with our coastal neighbors as outlined is greatly appreciated.

Sincerely,

*Bob Whalen*

Bob Whalen  
Mayor

C: County of Orange, Board of Supervisors  
City Council  
Shohreh Dupuis, City Manager

C



**CITY of LAGUNA NIGUEL**

30111 Crown Valley Parkway / Laguna Niguel, California, 92677  
Phone / 949-362-4300 Fax / 949-362-4352

**CITY COUNCIL**

Mayor Fred Minagar  
Mayor Pro Tem Elaine Gennawey  
Council Member Kelly Jennings  
Council Member Sandy Rains  
Council Member Rischi Paul Sharma

November 15, 2021

Orange County Board of Supervisors  
333. W. Santa Ana Blvd.  
Santa Ana, CA 92701

Dear Members of the Orange County Board of Supervisors,

I am writing to follow up on my previous letter expressing my concern about the proposed redistricting maps. Several of these proposed maps break up South Orange County into two or more districts.

The eleven South Orange County cities (Aliso Viejo, Dana Point, Laguna Beach, Laguna Hills, Laguna Niguel, Laguna Woods, Lake Forest, Mission Viejo, Rancho Santa Margarita, San Clemente, San Juan Capistrano) have several commonalities that should preclude them from being split into separate supervisorial districts. For example, many of the South Orange County cities contract with the Orange County Fire Authority and the Orange County Sheriff's Department for emergency services. All the cities have schools as part of Capistrano Unified School District, Saddleback Valley Unified School District, or Laguna Beach Unified School district. Additionally, all eleven cities fall within the jurisdiction of the South Orange County Community College District.

Furthermore, all eleven South Orange County cities are general law cities and have comparable ideologies to the management of public services. The demographics of South Orange County cities are relatively homogenous throughout the region and the communities will be best served by remaining in the same supervisorial district. I urge you to consider the similarities of these eleven cities and continue to have them remain together in a collective district.

Thank you very much for all of your hard work on the redistricting process and for always being mindful of the needs of the entire county.

Sincerely,

Fred Minagar  
Mayor

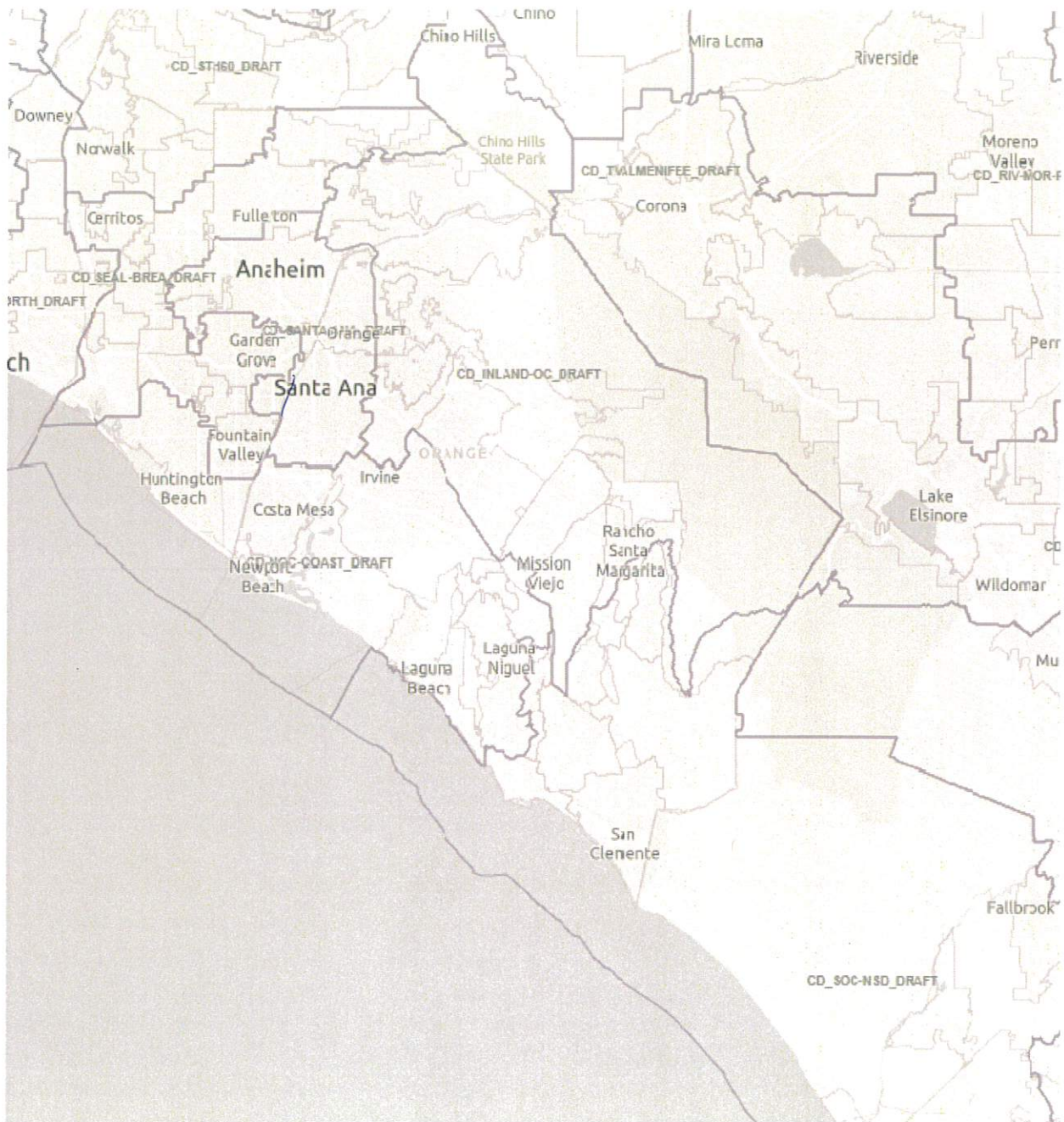
c: Laguna Niguel City Council

) )  
) )





# 11.10.21 Congressional Draft Map



11.10.21 State Senate Draft Map







# 11.10.21 State Assembly Draft Map

