

The 15th Annual Report on the Conditions of Children in Orange County

**Sponsored by the
Children's Services
Coordination Committee
Supervisor Janet Nguyen, Chair**

Supported by

- ❖ **Orange County Social Services Agency**
- ❖ **Children and Families Commission of Orange County**

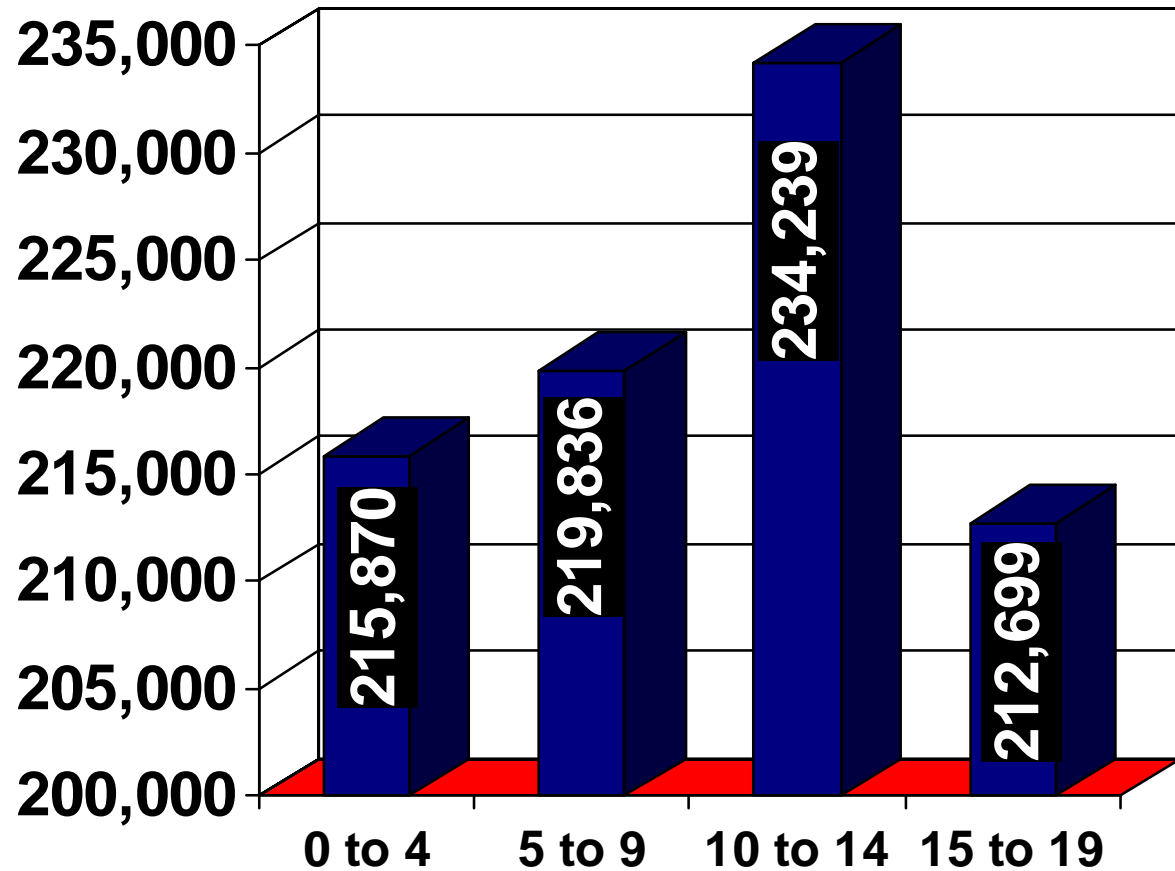
Produced by

- ❖ **Orangewood Children's Foundation**
- ❖ **California State University, Fullerton,
Center for Community Collaboration**



Children's Demographics

Total Population: 882,644



AGE DISTRIBUTION

Source Center for Demographic Research, 2006



Special Section (pgs. 22-31)

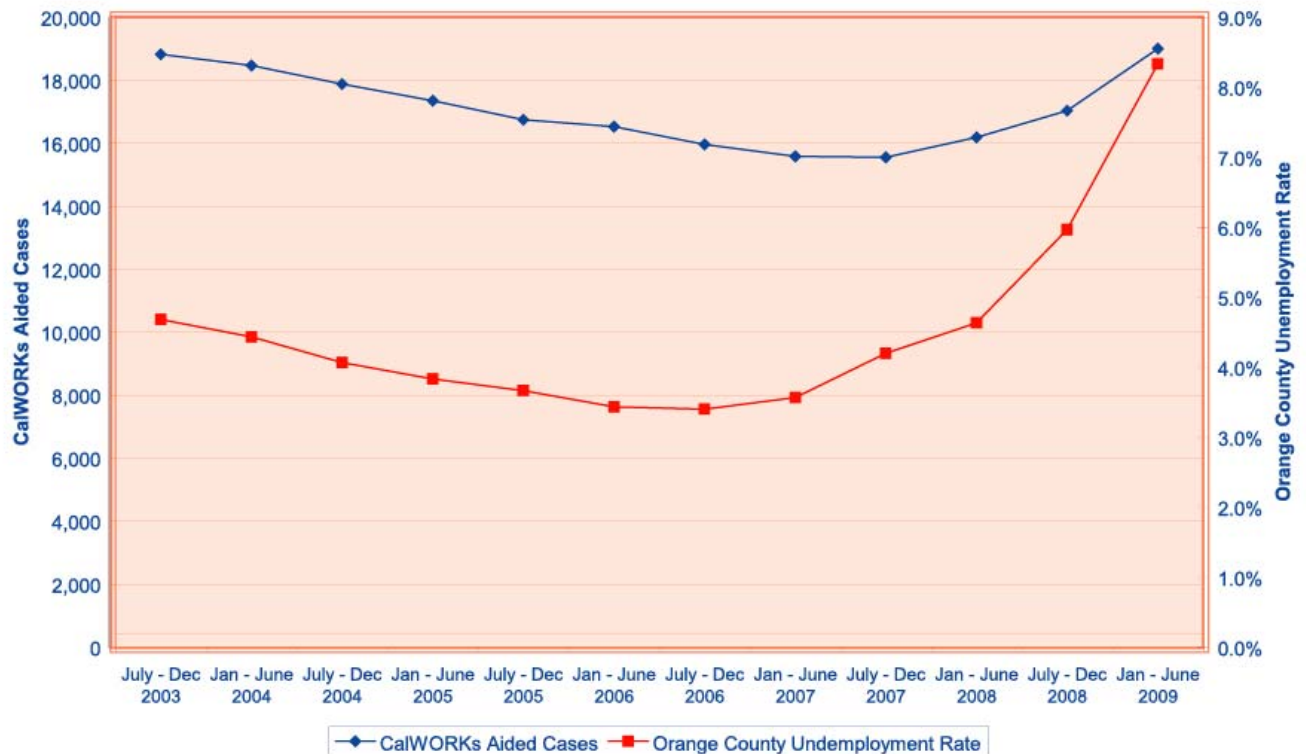
The Impact of the Economy on Children and Families

- A national poll demonstrated that 44% of the families surveyed were forced to spend less on extras and 24% of them applied for government health coverage.
- Families making \$30K or less are significantly more impacted than families making \$100K.
- Families making less than \$30K were more than twice as likely to report their kids experiencing stress compared to high income families.



The Impact of the Economy on Children and Families

ORANGE COUNTY SOCIAL SERVICES AGENCY, FAMILY SELF-SUFFICIENCY
 CalWORKs AIDED CASES VS. ORANGE COUNTY UNEMPLOYMENT RATE
 (6 Month Averages)



Good Health

THE GOOD NEWS

- There has been an increase in families' ability to **Access Health Care** (pg 38).
- 88% of mothers received **Early Prenatal Care**.
- Increase in Children and Youth Services (CYS), **Mental Health Services** (pg. 62) and an increase in Alcohol and Drug Abuse Services (ADAS), **Substance Abuse Services** (pg. 65).

NEEDS IMPROVEMENT

- Percentage of births with **Low Birth Weight** increased to 6.5% which is above the Healthy People 2010 goal of 5%.
- Children's inability to meet the minimum fitness standards in all six areas of the **Physical Fitness Test** (pg. 54) and the percentage of **Overweight Children** (pg. 56).
- Currently, about one out of five children lack **Adequate Immunizations** by age two (pg. 50).



Economic Well-Being

THE GOOD NEWS

- Increase in the number of **Licensed Child Care Spaces** (pg.80).
- 52% of all parents with children under the age of 13 are in the workforce and need quality child care.
- Child Support collections as increased consistently from 2000 – 2009.

NEEDS IMPROVEMENT

- 43% of students receive **Free and Reduced Lunch** (pg. 74).
- The average **Cost of Early Care and Education** in child care centers increased 58% (pg. 82).



Educational Achievement

2008/09 Public School Enrollment

504,136

THE GOOD NEWS

- The **Academic Performance Index (API)** scores increased (pg. 90). In 2008, approximately 51% of Orange County schools made the **API** statewide target of 800 (pg. 90).
- The statewide reading scores for 4th graders is MSS = 367 compared to Orange County's 379.

NEEDS IMPROVEMENT

- The **Average per Pupil Expenditure** for grades K-12 (pg. 96):
 - **Orange County:** \$8,844
 - **California:** \$9,539
 - **United States:** \$9,963



Academic Performance Index

Districts with Highest Percentage of API Growth Improvement, 2003 to 2009

School District	2003	2009	% Change
Anaheim City	644	749	16.3%
Fullerton Joint Union	703	809	15.1%
Santa Ana	614	706	15.0%
Magnolia Elementary	701	798	13.8%
Buena Park Elementary	708	803	13.4%
Fullerton Elementary	742	837	12.8%
Anaheim Union High	651	731	12.3%
Huntington Beach High School	720	807	12.1%
Tustin Unified	754	837	11.0%
La Habra City Elementary	695	770	10.8%
Westminster Elementary	725	802	10.6%
Newport-Mesa Unified	737	813	10.3%

Safe Homes and Communities

THE GOOD NEWS

- Monthly average number of **Dependent Children** decreased by 28% from 1998/99 to 2007/08. However, in the last two years there has been a 15% increase in **Dependent Children** and an 11% increase in **Out-of-Home Care** (pg. 116).
- There has been a 8.6% increase in the number of **Adoptive Placements** from 1998/99 to 2007/08 (pg. 112).

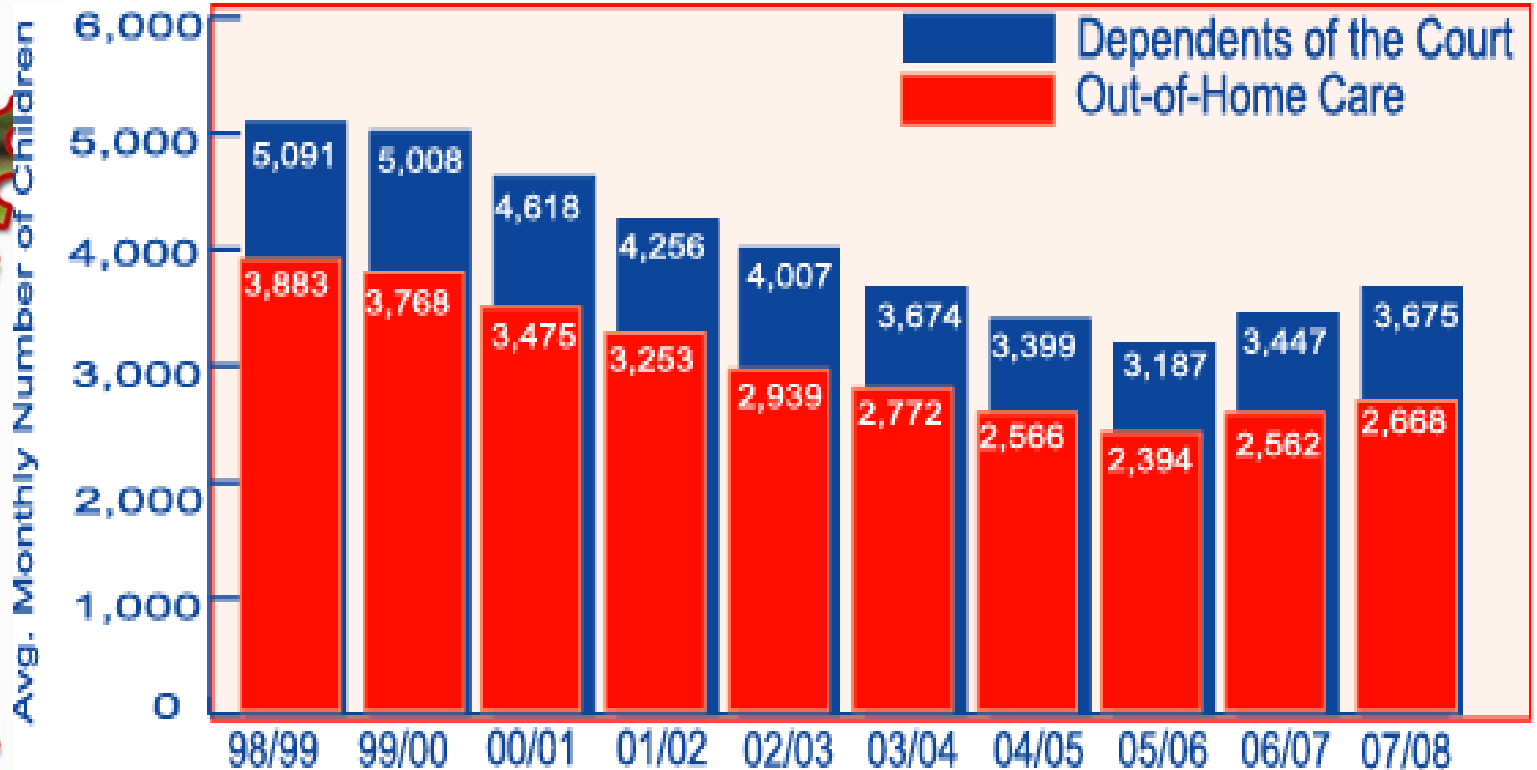
NEEDS IMPROVEMENT

- Number of **Gang Members** ages 8 to 17 increased by 36% from 1999 to 2008 (pg.128).
- Number of **Gang Members** ages 8 to 17 has been increasing steadily since a low of 830 in 2002 to 1,896 in 2008 (pg 128).
- Number of **Juvenile Arrests** increased from 2005 to 2007 (pg. 124).



Dependent Children

Average Monthly Number of Children in Out-of-Home Care and the Average Monthly Number of Dependents of the Court, 1998/99 to 2007/08



Juvenile Arrests

Total Juvenile Arrests for Youth 10 to 17 Years of Age,
1998 to 2007

