



2700 SATURN ST, BREA, CA 92821
T. 714.524.1870 F. 714.524.1875
WWW.JRMA.COM

Project Revision
RFP SUBMITTAL 12.19.2019

FULL-SERVICE
FIXED BASE
OPERATOR

ATLANTIC
AVIATION
SNA

NORTHWEST SITE
JOHN WAYNE AIRPORT
ORANGE COUNTY, CA



PRELIMINARY
NOT FOR
CONSTRUCTION

JR MILLER & ASSOCIATED SHALL RETAIN ALL COMMON LAW
STATUTORY AND OTHER RESERVED RIGHTS, INCLUDING THE
COPYRIGHT FOR THIS DOCUMENT INCLUDING REPRESENTED
DESIGNS AND SPECIFICATIONS.

SITE PLAN

AS NOTED
DATE XX
OWN

AS NOTED
SCALE: XX
CHK

JRMA Project No.
4740

A1.2

BUILDING SUMMARY

PROPOSED BUILDINGS

PHASE 1

HANGAR 2
HANGAR (210'x143')
SUBTOTAL: 30,030 S.F.

HANGAR 3
HANGAR (210'x143')
SUBTOTAL: 30,030 S.F.

HANGAR 1, 2, & 3 OFFICES
OFFICE/SHOP (SINGLE STORY): 7,054 S.F.
SUBTOTAL: 7,054 S.F.

OCSD FACILITY
FIRST FLOOR: 12,139 S.F.
SUPPORT (2-STORY): 14,757 S.F.
SUBTOTAL: 26,896 S.F.

TOTAL PROPOSED
BUILDING AREA - PHASE 1: 94,010 S.F.

PHASE 2

HANGAR 1
HANGAR (210'x143')
SUBTOTAL: 30,030 S.F.

HANGAR OFFICE
OFFICE/SHOP (SINGLE STORY): 1,856 S.F.
SUBTOTAL: 1,856 S.F.

FBO / GAF-FIS
FIRST FLOOR - FBO: 11,568 S.F.
FIRST FLOOR - GAF/FIS: 1,952 S.F.
SECOND FLOOR: 10,085 S.F.
SUBTOTAL: 23,605 S.F.

TOTAL PROPOSED
PHASE 2 BUILDING AREA: 55,491 S.F.

TOTAL PROPOSED BUILDING AREA
PHASE 1 + PHASE 2: 149,501 S.F.

DEMOLITION SUMMARY

PHASE 1

EXISTING ACI JET FLIGHT
SUPPORT HANGAR #162: 16,140 S.F.

EXISTING RESTROOM: 1,187 S.F.

EXISTING TIE DOWN SHADE
STRUCTURE #1: 21,050 S.F.

EXISTING TIE DOWN SHADE
STRUCTURE #2: 21,104 S.F.

EXISTING TIE DOWN SHADE
STRUCTURE #3: 20,903 S.F.
SUBTOTAL - PHASE 1: 80,334 S.F.

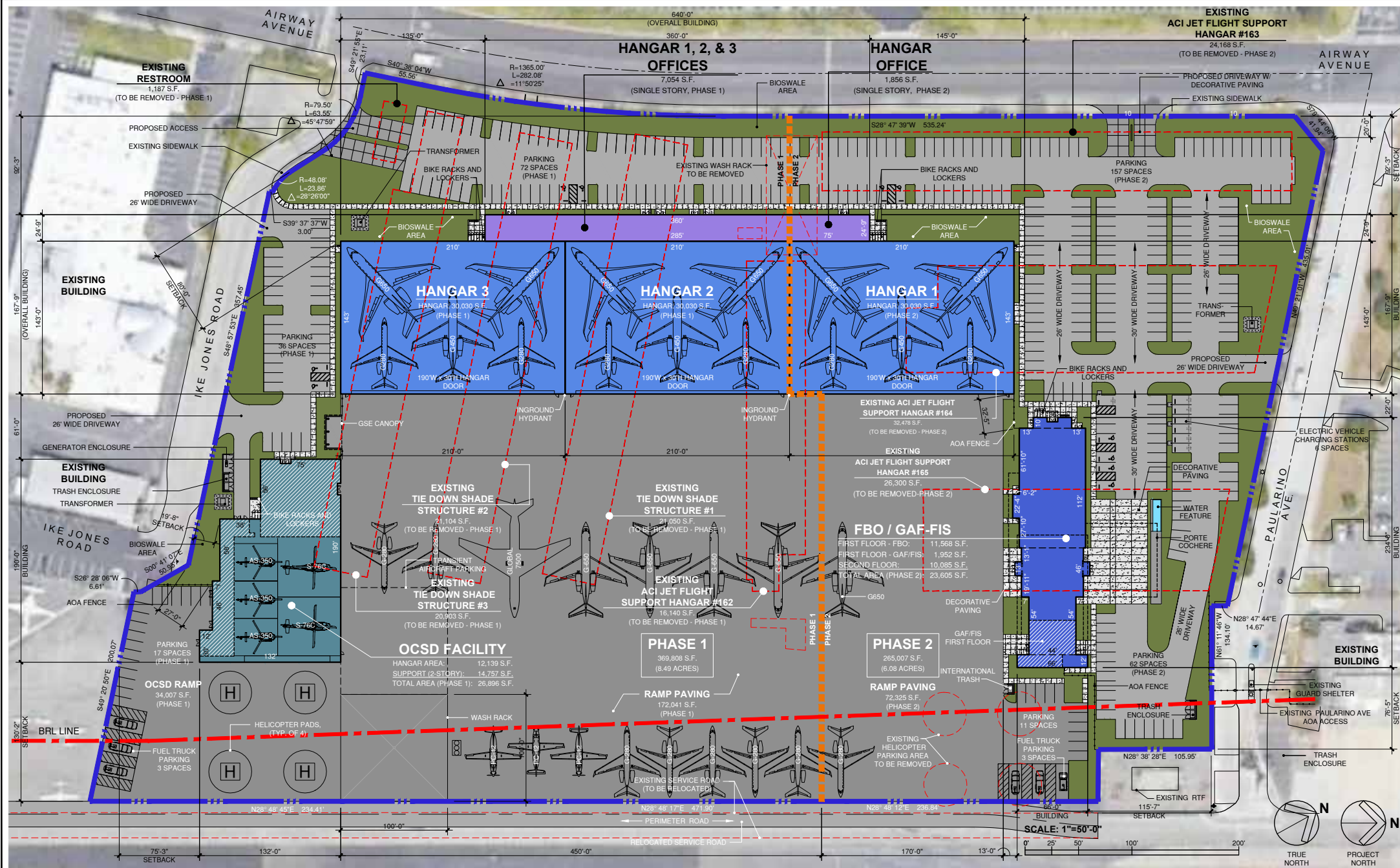
PHASE 2

EXISTING ACI JET FLIGHT
SUPPORT HANGAR #163: 24,168 S.F.

EXISTING ACI JET FLIGHT
SUPPORT HANGAR #164: 32,478 S.F.

EXISTING ACI JET FLIGHT
SUPPORT HANGAR #165: 26,300 S.F.
SUBTOTAL - PHASE 2: 82,946 S.F.

TOTAL BUILDING AREA TO BE
REMOVED - PHASE 1 + PHASE 2: 163,280 S.F.

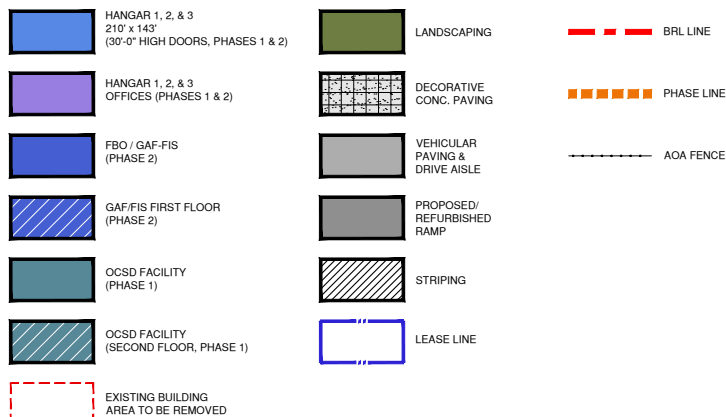


SITE PLAN

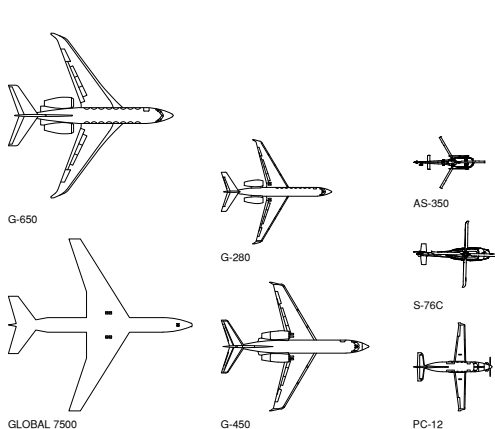
SCALE
1" = 50'-0"

1

LEGEND



AIRCRAFT (FOR ILLUSTRATIVE PURPOSES)



SITE SUMMARY

PHASE 1		
BUILDING FOOTPRINT:	87,276 S.F.	23.6%
LANDSCAPE:	29,207 S.F.	8.0%
HARDSCAPE SIDEWALK:	4,823 S.F.	1.2%
AREA OF RAMP RENOVATION:	206,048 S.F.	55.7%
OTHER PAVEMENT AREAS:	3,877 S.F.	1.0%
PARKING DRIVE:	38,577 S.F.	10.5%
SUBTOTAL - PHASE 1:	369,808 S.F.	100.0%
(8.49 ACRES)		
PHASE 2		
BUILDING FOOTPRINT:	45,406 S.F.	17.1%
LANDSCAPE:	49,299 S.F.	19.0%
HARDSCAPE SIDEWALK:	11,979 S.F.	4.3%
AREA OF RAMP RENOVATION:	72,325 S.F.	27.3%
OTHER PAVEMENT AREAS:	3,127 S.F.	1.1%
PARKING DRIVE:	82,871 S.F.	31.2%
SUBTOTAL - PHASE 2:	265,007 S.F.	100.0%
(6.08 ACRES)		
PHASE 1 + PHASE 2		
BUILDING FOOTPRINT:	132,682 S.F.	20.9%
LANDSCAPE:	78,506 S.F.	12.4%
HARDSCAPE SIDEWALK:	16,802 S.F.	2.6%
AREA OF RAMP RENOVATION:	278,373 S.F.	43.9%
OTHER PAVEMENT AREAS:	7,004 S.F.	1.1%
PARKING DRIVE:	121,448 S.F.	19.1%
TOTAL NW-01 LEASEHOLD:	634,815 S.F.	100.0%
(PHASE 1 + PHASE 2):	(14.57 ACRES)	

PARKING SUMMARY

ON-SITE PARKING

PHASE 1	
STANDARD PARKING SPACES	121
ADA PARKING SPACES	4
TOTAL SPACES - PHASE 1:	125
FUEL TRUCK PARKING SPACES	3
PHASE 2	
STANDARD PARKING SPACES	218
ELECTRIC VEHICLE CHARGING STATIONS	6
ADA PARKING SPACES	6
TOTAL SPACES - PHASE 2:	230
FUEL TRUCK PARKING SPACES	3
PHASE 1 + PHASE 2	
STANDARD PARKING SPACES	339
ELECTRIC VEHICLE CHARGING STATIONS	6
ADA PARKING SPACES	10
TOTAL SPACES - PHASE 1 + PHASE 2:	355
TOTAL SPACES REQUIRED PER THE EIR:	355
FUEL TRUCK PARKING SPACES	6

KEY MAP





2700 SATURN ST, BREA, CA 92821
T. 714.524.1870 F. 714.524.1875
WWW.JRMA.COM

Project Revision
RFP SUBMITTAL 12.19.2019

FULL-SERVICE
FIXED BASE
OPERATOR

ATLANTIC
AVIATION
SNA

NORTHWEST SITE
JOHN WAYNE AIRPORT
ORANGE COUNTY, CA



PRELIMINARY
NOT FOR
CONSTRUCTION

JR MILLER & ASSOCIATES SHALL RETAIN ALL COMMON LAW
STATUTORY AND OTHER RESERVED RIGHTS INCLUDING THE
COPYRIGHT FOR THIS DOCUMENT INCLUDING REPRESENTED
DESIGNS AND SPECIFICATIONS.

AERIAL
RENDERINGS 1

AS NOTED
DATE XX
DWN

AS NOTED
SCALE: XX
CHK

JRMA Project No.
4740

A9.1

AERIAL VIEW SOUTH ALONG AIRWAY AVE 1



AERIAL VIEW SOUTHWEST FROM AIRFIELD 1



AERIAL VIEW NORTHWEST FROM AIRFIELD 2



AERIAL VIEW NORTH EAST ALONG AIRWAY AVE 3



AERIAL VIEW WEST FROM AIRFIELD 4

JRMA
ARCHITECTS ENGINEERS

2700 SATURN ST, BREA, CA 92821
T. 714.524.1870 F. 714.524.1875
WWW.JRMA.COM

Project Revision
RFP SUBMITTAL 12.19.2019

FULL-SERVICE
FIXED BASE
OPERATOR

ATLANTIC
AVIATION
SNA

NORTHWEST SITE
JOHN WAYNE AIRPORT
ORANGE COUNTY, CA

ATLANTIC

PRELIMINARY
NOT FOR
CONSTRUCTION

JR MILLER & ASSOCIATES SHALL RETAIN ALL COMMON LAW
STATUTORY AND OTHER RESERVED RIGHTS, INCLUDING THE
COPYRIGHT FOR THIS DOCUMENT INCLUDING REPRESENTED
DESIGNS AND SPECIFICATIONS.

AERIAL
RENDERINGS 2

AS NOTED
DATE XX
DWN

AS NOTED
SCALE: XX
CHK

JRMA Project No.
4740

A9.2



JRMA
ARCHITECTS ENGINEERS

2700 SATURN ST, BREA, CA 92821
T. 714.524.1870 F. 714.524.1875
WWW.JRMA.COM

Project Revision
RFP SUBMITTAL 12.19.2019

FULL-SERVICE
FIXED BASE
OPERATOR

ATLANTIC
AVIATION
SNA

NORTHWEST SITE
JOHN WAYNE AIRPORT
ORANGE COUNTY, CA

ATLANTIC

PRELIMINARY
NOT FOR
CONSTRUCTION

JR MILLER & ASSOCIATES SHALL RETAIN ALL COMMON LAW
STATUTORY AND OTHER RESERVED RIGHTS, INCLUDING THE
COPYRIGHT FOR THIS DOCUMENT INCLUDING REPRESENTED
DESIGNS AND SPECIFICATIONS.

FBO EXTERIOR
RENDERINGS 1

AS NOTED
DATE XX
DWN

AS NOTED
SCALE XX
CHK

JRMA Project No.
4740

A9.3

FBO ENTRY LANDSIDE 1

JRMA
ARCHITECTS ENGINEERS

2700 SATURN ST, BREA, CA 92821
T. 714.524.1870 F. 714.524.1875
WWW.JRMA.COM

Project Revision
RFP SUBMITTAL 12.19.2019

FULL-SERVICE
FIXED BASE
OPERATOR

**ATLANTIC
AVIATION
SNA**

NORTHWEST SITE
JOHN WAYNE AIRPORT
ORANGE COUNTY, CA

ATLANTIC

PRELIMINARY
NOT FOR
CONSTRUCTION

JR MILLER & ASSOCIATES SHALL RETAIN ALL COMMON LAW
STATUTORY AND OTHER RESERVED RIGHTS, INCLUDING THE
COPYRIGHT FOR THIS DOCUMENT INCLUDING REPRESENTED
DESIGNS AND SPECIFICATIONS.

**FBO EXTERIOR
RENDERINGS 2**

AS NOTED
DATE: XX
DWN

AS NOTED
SCALE: XX
CHK

JRMA Project No.
4740

A9.4



FBO ENTRY LANDSIDE 1



FBO AIRSIDE 2



FBO AIRSIDE 3



FBO PORTE COCHERE LANDSIDE 4



JRMA
ARCHITECTS ENGINEERS

2700 SATURN ST, BREA, CA 92821
T. 714.524.1870 F. 714.524.1875
WWW.JRMA.COM

Project Revision
RFP SUBMITTAL 12.19.2019

FULL-SERVICE
FIXED BASE
OPERATOR

ATLANTIC
AVIATION
SNA

NORTHWEST SITE
JOHN WAYNE AIRPORT
ORANGE COUNTY, CA

ATLANTIC

PRELIMINARY
NOT FOR
CONSTRUCTION

JR MILLER & ASSOCIATES SHALL RETAIN ALL COMMON LAW
STATUTORY AND OTHER RESERVED RIGHTS, INCLUDING THE
COPYRIGHT FOR THIS DOCUMENT INCLUDING REPRESENTED
DESIGNS AND SPECIFICATIONS.

HANGAR
EXTERIOR
RENDERINGS 1

AS NOTED
DATE XX
DWN

AS NOTED
SCALE XX
CHK

JRMA Project No.
4740

A9.6

ENTRY FROM IKE JONES ROAD 1



VIEW WEST FROM AIRFIELD 1



AERIAL VIEW NORTHEAST ALONG IKE JONES ROAD 2



VIEW EAST ALONG IKE JONES ROAD 3



AERIAL VIEW SOUTH FROM RAMP 4

JRMA
ARCHITECTS ENGINEERS

2700 SATURN ST, BREA, CA 92821
T. 714.524.1870 F. 714.524.1875
WWW.JRMA.COM

Project Revision
RFP SUBMITTAL 12.19.2019

FULL-SERVICE
FIXED BASE
OPERATOR

ATLANTIC
AVIATION
SNA

NORTHWEST SITE
JOHN WAYNE AIRPORT
ORANGE COUNTY, CA

ATLANTIC

PRELIMINARY
NOT FOR
CONSTRUCTION

JR MILLER & ASSOCIATES SHALL RETAIN ALL COMMON LAW
STATUTORY AND OTHER RESERVED RIGHTS INCLUDING THE
COPYRIGHT FOR THIS DOCUMENT INCLUDING REPRESENTED
DESIGNS AND SPECIFICATIONS.

OCSD
EXTERIOR
RENDERINGS

AS NOTED
DATE XX
DWN

AS NOTED
SCALE: XX
CHK

JRMA Project No.
4740

A9.9



2700 SATURN ST, BREA, CA 92821
T. 714.524.1870 F. 714.524.1875
WWW.JRMA.COM

Project Revision		
△	RFP SUBMITTAL	12.19.2019

FULL-SERVICE
FIXED BASE
OPERATOR

ATLANTIC
AVIATION
SNA

NORTHWEST SITE
JOHN WAYNE AIRPORT
ORANGE COUNTY, CA



PRELIMINARY
NOT FOR
CONSTRUCTION

JRMILLER & ASSOCIATED SHALL RETAIN ALL COMMON LAW
STATUTORY AND OTHER RESERVED RIGHTS, INCLUDING THE
COPYRIGHT FOR THIS DOCUMENT INCLUDING REPRESENTED
DESIGNS AND SPECIFICATIONS.

OCSD
EXTERIOR
MATERIALS

AS NOTED	AS NOTED
DATE	SCALE
XX	XX
DWN	CHK

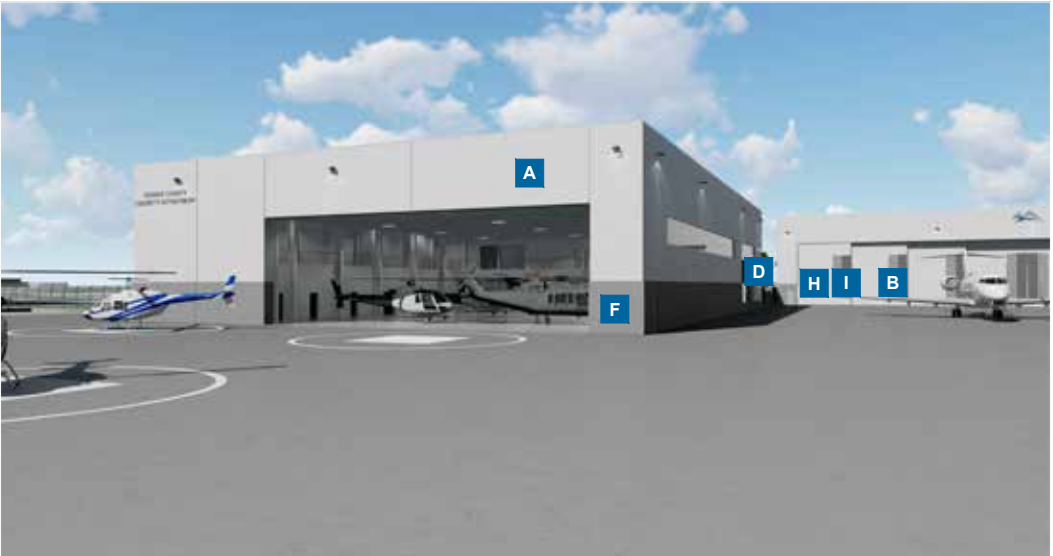
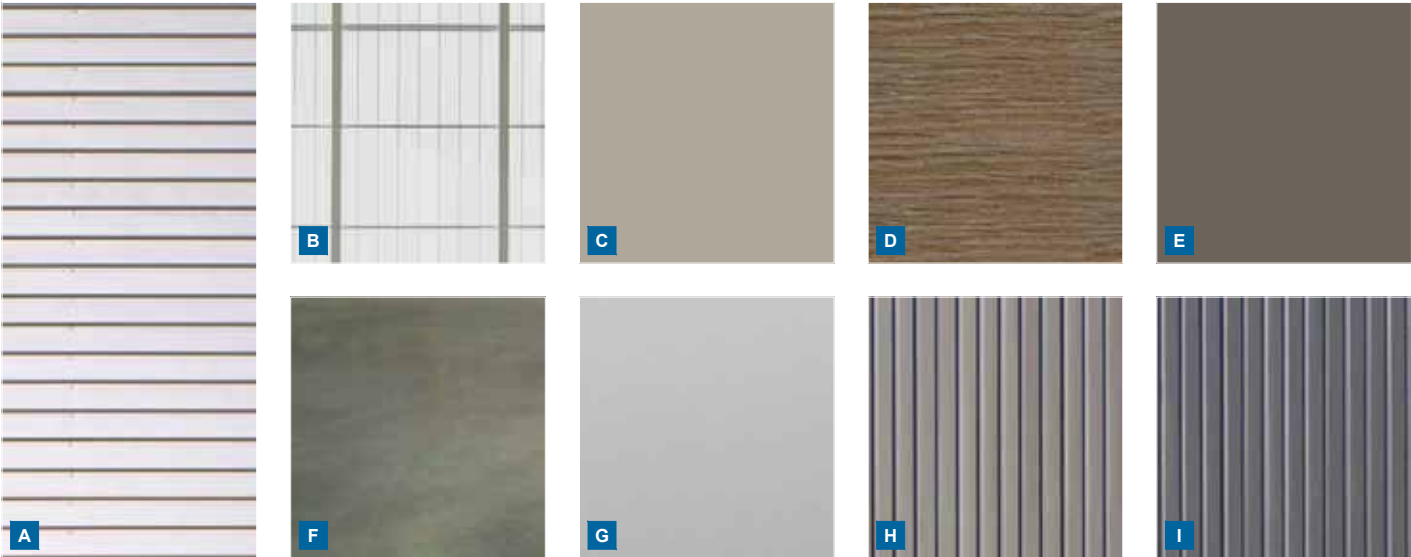
JRMA Project No.
4740

A9.10

EXTERIOR CONCEPT
OCSD MATERIALS

SPECIFICATIONS

- A. T5 HORIZ: SNOWDRIFT WHITE
- B. GRAY MATTE
- C. TSZ SILVER METALLIC
- D. NW17 MILANO GRIGIO
- E. A70.0.0 SLATE GREY
- F. CLEAR CONCRETE SEALER
- G. SOLAR GRAY
- H. T6_A VERT: OLD ZINC GRAY
- I. T6_A VERT: SLATE GRAY





JRMA
ARCHITECTS ENGINEERS

2700 SATURN ST | BREA, CA 92821
T. 714.524.1870 | F. 714.524.1875
WWW.JRMA.COM

Project Revision
RFP SUBMITTAL 12.19.2019

**FULL-SERVICE
FIXED BASE
OPERATOR**

**ATLANTIC
AVIATION
SNA**

**NORTHWEST SITE
JOHN WAYNE AIRPORT
ORANGE COUNTY, CA**

ATLANTIC

**PRELIMINARY
NOT FOR
CONSTRUCTION**

JR MILLER & ASSOCIATES SHALL RETAIN ALL COMMON
LAW STATUTORY AND OTHER RESERVED RIGHTS,
INCLUDING THE COPYRIGHT FOR THIS DOCUMENT
INCLUDING REPRESENTED DESIGN AND SPECIFICATIONS.

**FBO
EXTERIOR
LANDSIDE**

AS NOTED
DATE Author
DWN

AS NOTED
SCALE Checker
CHK


JRMA Project No.
4740

A9.11



JRMA
ARCHITECTS ENGINEERS

2700 SATURN ST | BREA, CA 92821
T. 714.524.1870 | F. 714.524.1875
WWW.JRMA.COM

Project Revision		
	RFP SUBMITTAL	12.19.2019

FULL-SERVICE
FIXED BASE
OPERATOR

ATLANTIC
AVIATION
SNA

NORTHWEST SITE
JOHN WAYNE AIRPORT
ORANGE COUNTY, CA



PRELIMINARY
NOT FOR
CONSTRUCTION

JRMILLER & ASSOCIATES SHALL RETAIN ALL COMMON
LAW STATUTORY AND OTHER RESERVED RIGHTS,
INCLUDING THE COPYRIGHT FOR THIS DOCUMENT
INCLUDING REPRESENTED DESIGNS AND SPECIFICATIONS.

FBO
EXTERIOR
AIRSIDE

AS NOTED	AS NOTED
DATE	SCALE
Author	Checker
DWN	CHK

JRMA Project No.
4740

A9.12



2700 SATURN ST | BREA, CA 92821
T. 714.524.1870 | F. 714.524.1875
WWW.JRMA.COM

Project Revision		
△	RFP SUBMITTAL	12.19.2019

FULL-SERVICE
FIXED BASE
OPERATOR

ATLANTIC
AVIATION
SNA

NORTHWEST SITE
JOHN WAYNE AIRPORT
ORANGE COUNTY, CA



PRELIMINARY
NOT FOR
CONSTRUCTION

JR MILLER & ASSOCIATES SHALL RETAIN ALL COMMON
LAW STATUTORY AND OTHER RESERVED RIGHTS,
INCLUDING THE COPYRIGHT FOR THIS DOCUMENT
INCLUDING REPRESENTED DESIGN AND SPECIFICATIONS.

FBO FIRST
FLOOR
LOBBY

AS NOTED	AS NOTED
DATE	SCALE
Author	Checker
DWN	CHK

JRMA Project No.
4740

ID1.1



JRMA
ARCHITECTS ENGINEERS

2700 SATURN ST | BREA, CA 92821
T. 714.524.1870 | F. 714.524.1875
WWW.JRMA.COM

Project Revision
RFP SUBMITTAL 12.19.2019

FULL-SERVICE
FIXED BASE
OPERATOR

**ATLANTIC
AVIATION
SNA**

NORTHWEST SITE
JOHN WAYNE AIRPORT
ORANGE COUNTY, CA

ATLANTIC

PRELIMINARY
NOT FOR
CONSTRUCTION

JR MILLER & ASSOCIATES SHALL RETAIN ALL COMMON
LAW STATUTORY AND OTHER RESERVED RIGHTS,
INCLUDING THE COPYRIGHT FOR THIS DOCUMENT
INCLUDING REPRESENTED DESIGNS AND SPECIFICATIONS.

**FBO FIRST
FLOOR
LOBBY**

AS NOTED
DATE Author
DWN

AS NOTED
SCALE Checker
CHK

JRMA Project No.
4740

ID1.2



JRMA
ARCHITECTS ENGINEERS

2700 SATURN ST | BREA, CA 92821
T. 714.524.1870 | F. 714.524.1875
WWW.JRMA.COM

Project Revision
RFP SUBMITTAL 12.19.2019

**FULL-SERVICE
FIXED BASE
OPERATOR**

**ATLANTIC
AVIATION
SNA**

**NORTHWEST SITE
JOHN WAYNE AIRPORT
ORANGE COUNTY, CA**

ATLANTIC

**PRELIMINARY
NOT FOR
CONSTRUCTION**

JR MILLER & ASSOCIATES SHALL RETAIN ALL COMMON
LAW STATUTORY AND OTHER RESERVED RIGHTS,
INCLUDING THE COPYRIGHT FOR THIS DOCUMENT
INCLUDING REPRESENTED DESIGN AND SPECIFICATIONS.

**FBO FIRST
FLOOR
LOBBY
AIRSIDE**

AS NOTED **AS NOTED**
DATE **Author** SCALE **Checker**
DWN CHK

JRMA Project No.
4740

ID1.3

INTERIOR CONCEPT
FBO FIRST FLOOR

SPECIFICATIONS

1. TERROXY TERRAZZO FLOOR CREME

2. TERROXY TERRAZZO FLOOR LIGHT GREY

3. CARNEIGE ACOUSTICAL PANEL TEXTILE JOURNEY

4. WOOD CASEWORK

5. SOLID SURFACING BRILLIANT WHITE

6. ARKTURA VAPOR WALL

7. INHABIT CONCRETE ARCHITECTURAL TILES

8. SHAW HOSPITALITY CARPET INLAY
9. ARMSTRONG ACOUSTICAL WALL AND CEILING SYSTEM

10. ALPOLIC ACM SYSEMT BSX SILVER

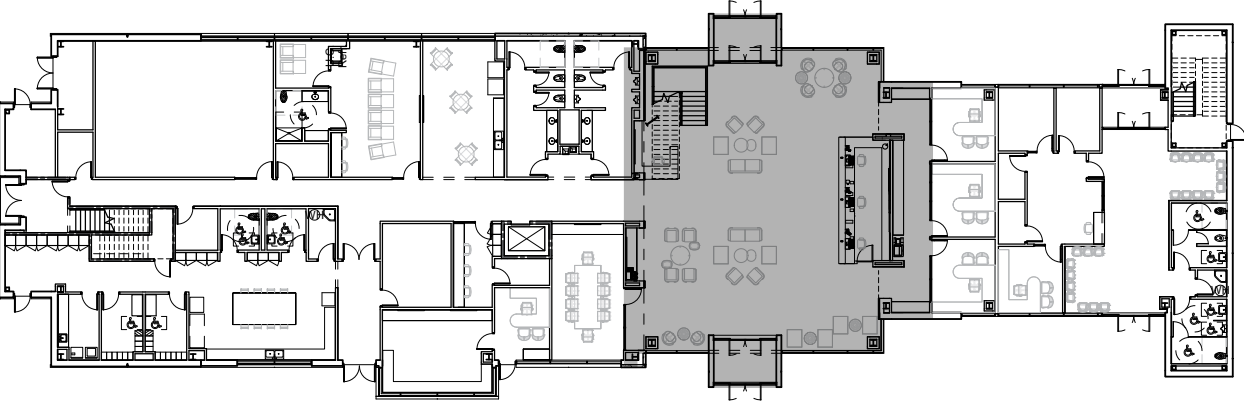
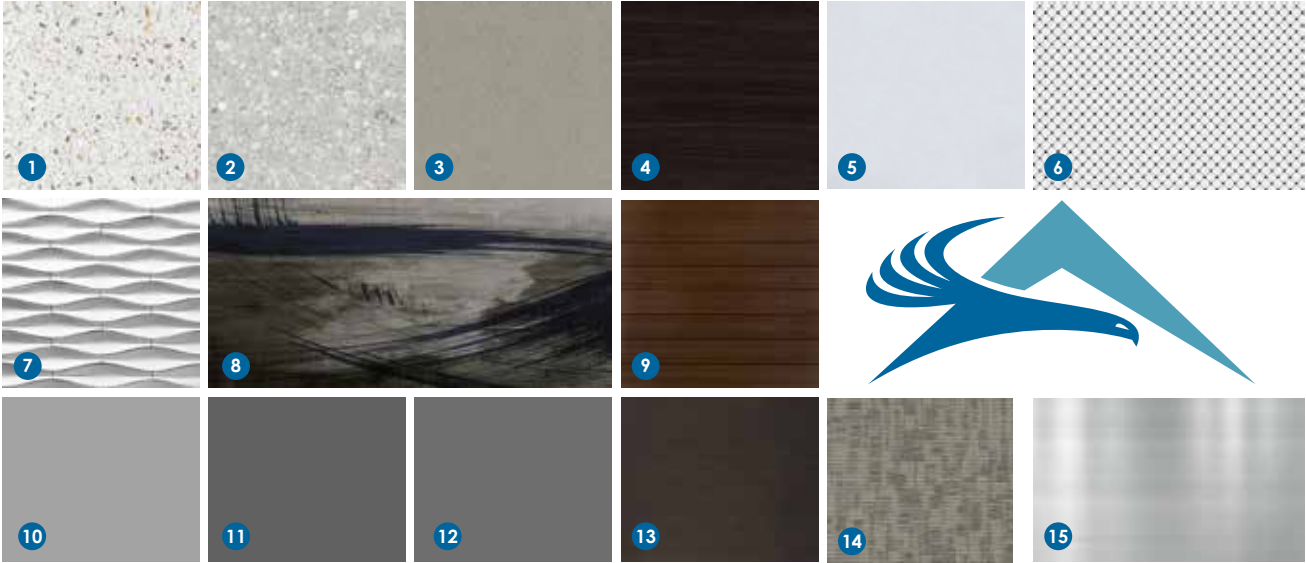
11. ALPOLIC ACM SYSEMT MZG MICA GREY

12. ALPOLIC ACM SYSEMT MICA MFS GREY

13. POLISHED DARK BRONZE HANDRAIL/ GUARDRAIL

14. SHAW CONTRACT CARPET

15. BACKLIT STAINLESS STEEL ATLANTIC LOGO



FLOOR PLAN



JRMA
ARCHITECTS ENGINEERS

2700 SATURN ST | BREA, CA 92821
T. 714.524.1870 | F. 714.524.1875
WWW.JRMA.COM

Project Revision
RFP SUBMITTAL 12.19.2019

FULL-SERVICE
FIXED BASE
OPERATOR

ATLANTIC
AVIATION
SNA

NORTHWEST SITE
JOHN WAYNE AIRPORT
ORANGE COUNTY, CA

ATLANTIC

PRELIMINARY
NOT FOR
CONSTRUCTION

JR MILLER & ASSOCIATES SHALL RETAIN ALL COMMON
LAW STATUTORY AND OTHER RESERVED RIGHTS,
INCLUDING THE COPYRIGHT FOR THIS DOCUMENT
INCLUDING REPRESENTED DESIGNS AND SPECIFICATIONS.

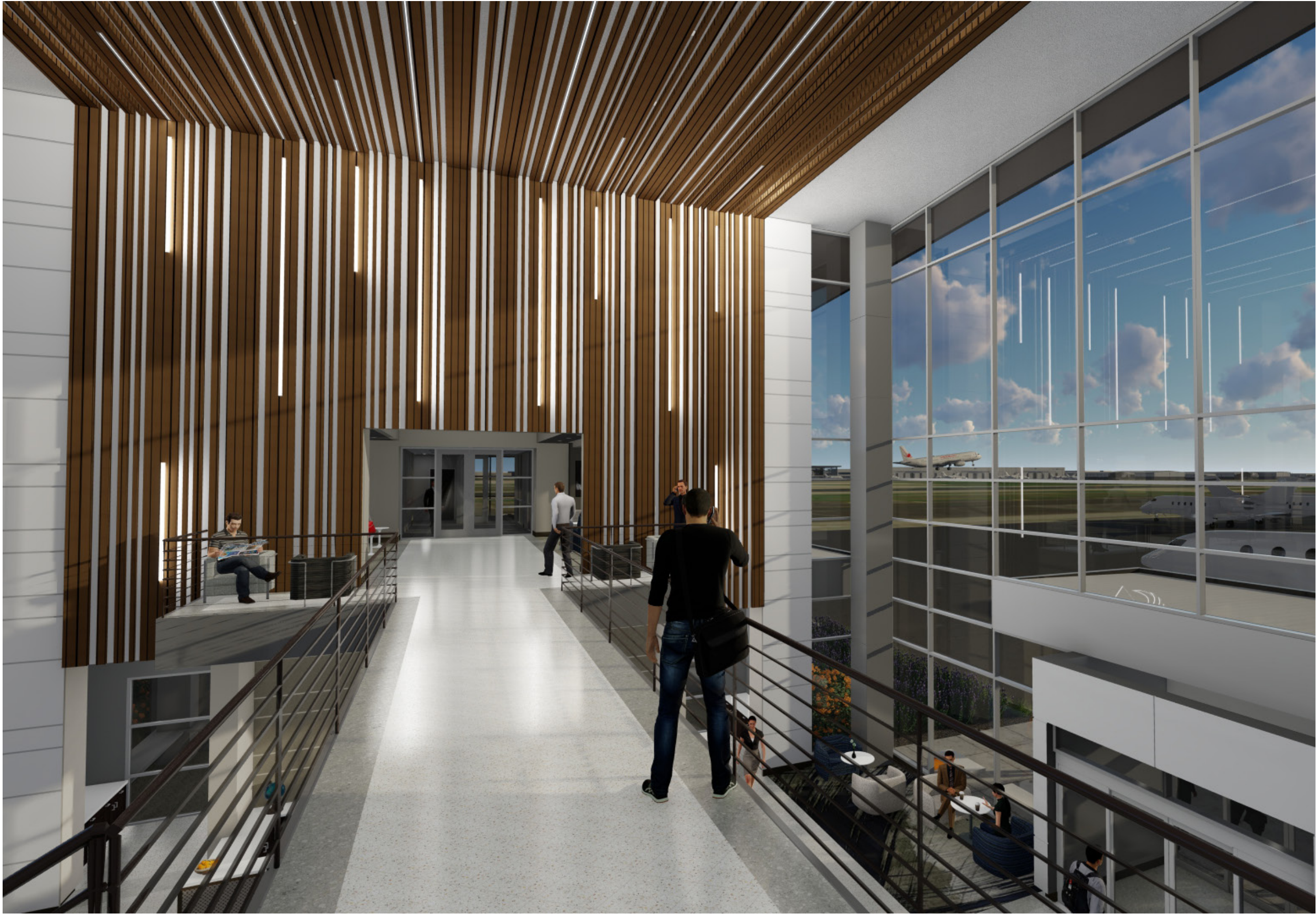
FBO FIRST
FLOOR
LOBBY
MATERIALS

AS NOTED
DATE Author
DWN

AS NOTED
SCALE Checker
CHK

JRMA Project No.
4740

ID1.4



JRMA
ARCHITECTS ENGINEERS

2700 SATURN ST | BREA, CA 92821
T. 714.524.1870 | F. 714.524.1875
WWW.JRMA.COM

Project Revision

RFP SUBMITTAL 12.19.2019

FULL-SERVICE
FIXED BASE
OPERATOR

ATLANTIC
AVIATION
SNA

NORTHWEST SITE
JOHN WAYNE AIRPORT
ORANGE COUNTY, CA

ATLANTIC

PRELIMINARY
NOT FOR
CONSTRUCTION

JR MILLER & ASSOCIATES SHALL RETAIN ALL COMMON
LAW STATUTORY AND OTHER RESERVED RIGHTS,
INCLUDING THE COPYRIGHT FOR THIS DOCUMENT
INCLUDING REPRESENTED DESIGN AND SPECIFICATIONS.

FBO FIRST
FLOOR
BRIDGE

AS NOTED	AS NOTED
DATE	SCALE
Author	Checker
DWN	CHK

JRMA Project No.
4740

ID1.5



JRMA
ARCHITECTS ENGINEERS

2700 SATURN ST | BREA, CA 92821
T. 714.524.1870 | F. 714.524.1875
WWW.JRMA.COM

Project Revision
RFP SUBMITTAL 12.19.2019

FULL-SERVICE
FIXED BASE
OPERATOR

ATLANTIC
AVIATION
SNA

NORTHWEST SITE
JOHN WAYNE AIRPORT
ORANGE COUNTY, CA

ATLANTIC

PRELIMINARY
NOT FOR
CONSTRUCTION

JR MILLER & ASSOCIATES SHALL RETAIN ALL COMMON
LAW STATUTORY AND OTHER RESERVED RIGHTS,
INCLUDING THE COPYRIGHT FOR THIS DOCUMENT
INCLUDING REPRESENTED DESIGNS AND SPECIFICATIONS.

FBO SECOND
FLOOR
LOUNGE

AS NOTED
DATE Author
DWN

AS NOTED
SCALE
CHECKER
CHK

JRMA Project No.
4740

ID1.6



JRMA
ARCHITECTS ENGINEERS

2700 SATURN ST | BREA, CA 92821
T. 714.524.1870 | F. 714.524.1875
WWW.JRMA.COM

Project Revision
RFP SUBMITTAL 12.19.2019

**FULL-SERVICE
FIXED BASE
OPERATOR**

**ATLANTIC
AVIATION
SNA**

**NORTHWEST SITE
JOHN WAYNE AIRPORT
ORANGE COUNTY, CA**

ATLANTIC

**PRELIMINARY
NOT FOR
CONSTRUCTION**

JR MILLER & ASSOCIATES SHALL RETAIN ALL COMMON
LAW STATUTORY AND OTHER RESERVED RIGHTS,
INCLUDING THE COPYRIGHT FOR THIS DOCUMENT
INCLUDING REPRESENTED DESIGN AND SPECIFICATIONS.

**HANGAR
OFFICE PLAN**

AS NOTED	AS NOTED
DATE	SCALE
Author	Checker
DWN	CHK

JRMA Project No.
4740

ID2.1



2700 SATURN ST | BREA, CA 92821
T. 714.524.1870 | F. 714.524.1875
WWW.JRMA.COM

Project Revision		
△	RFP SUBMITTAL	12.19.2019

FULL-SERVICE
FIXED BASE
OPERATOR

ATLANTIC
AVIATION
SNA

NORTHWEST SITE
JOHN WAYNE AIRPORT
ORANGE COUNTY, CA



PRELIMINARY
NOT FOR
CONSTRUCTION

JR MILLER & ASSOCIATES SHALL RETAIN ALL COMMON
LAW STATUTORY AND OTHER RESERVED RIGHTS,
INCLUDING THE COPYRIGHT FOR THIS DOCUMENT
INCLUDING REPRESENTED DESIGNS AND SPECIFICATIONS.

HANGAR
OFFICE PLAN
MATERIALS

AS NOTED	AS NOTED
DATE	SCALE
Author	Checker
DWN	CHK

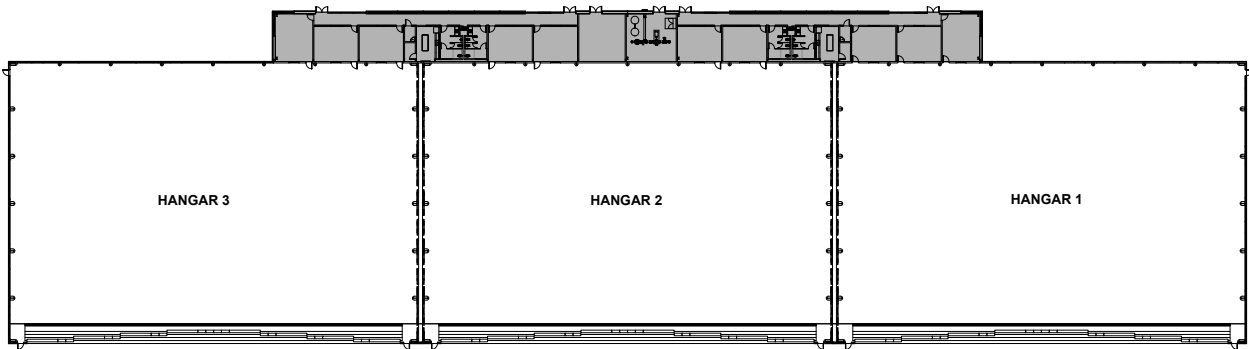
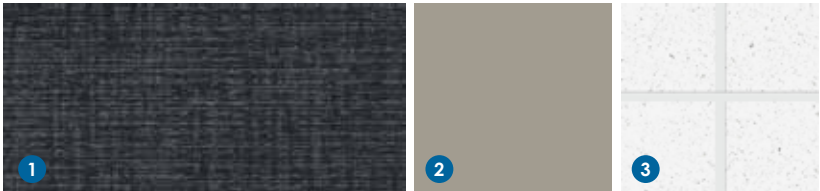
JRMA Project No.
4740

ID2.2

INTERIOR CONCEPT
HANGAR OFFICE PLAN

SPECIFICATIONS

- 1. SHAW CONTRACT CARPET
- 2. SHERWIN WILLIAMS WALL PAINT
- 3. ACOUSTIC CEILING TILES



FLOOR PLAN





2700 SATURN ST | BREA, CA 92821
T. 714.524.1870 | F. 714.524.1875
WWW.JRMA.COM

Project Revision

RFP SUBMITTAL 12.19.2019

FULL-SERVICE
FIXED BASE
OPERATOR

ATLANTIC
AVIATION
SNA

NORTHWEST SITE
JOHN WAYNE AIRPORT
ORANGE COUNTY, CA



PRELIMINARY
NOT FOR
CONSTRUCTION

JR MILLER & ASSOCIATES SHALL RETAIN ALL COMMON
LAW STATUTORY AND OTHER RESERVED RIGHTS,
INCLUDING THE COPYRIGHT FOR THIS DOCUMENT
INCLUDING REPRESENTED DESIGN AND SPECIFICATIONS.

OCSD FIRST
FLOOR PLAN

AS NOTED	AS NOTED
DATE	SCALE
Author	Checker
DWN	CHK

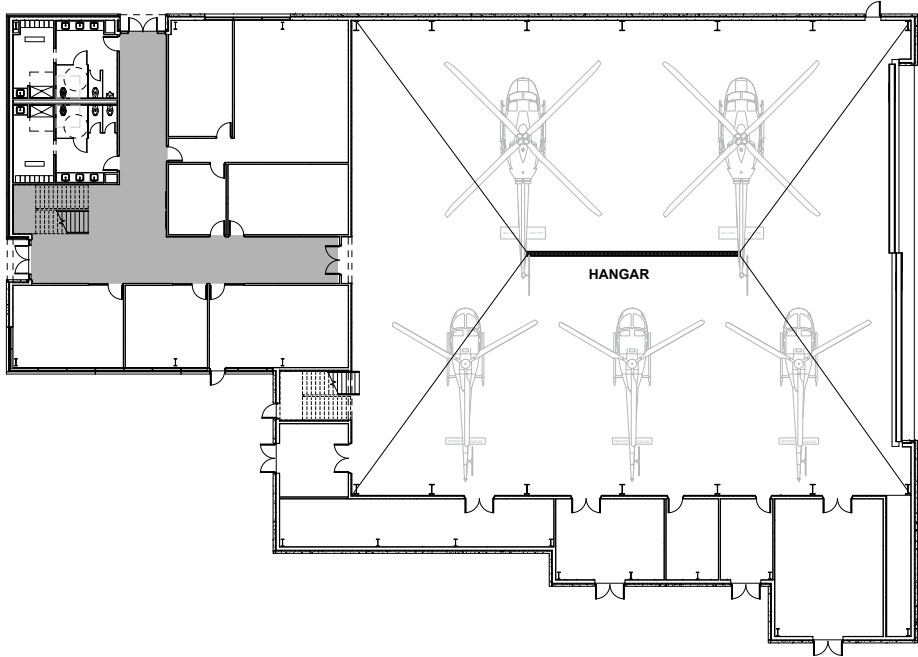
JRMA Project No.
4740

ID3.1

INTERIOR CONCEPT
OCSD FIRST FLOOR

SPECIFICATIONS

- 1. TERROXY TERRAZZO FLOOR MID-WHITE
- 2. PORCELAIN STAIR TREAD
- 3. METAL PETRO BRONZE STAIR FRAME
- 4. STAINLESS STEEL HANDRAIL
- 5. CARNEGIE WALL PANEL TEXTILE
- 6. OCSD LOGO



FLOOR PLAN



JRMA
ARCHITECTS ENGINEERS

2700 SATURN ST | BREA, CA 92821
T. 714.524.1870 | F. 714.524.1875
WWW.JRMA.COM

Project Revision
RFP SUBMITTAL 12.19.2019

FULL-SERVICE
FIXED BASE
OPERATOR

ATLANTIC
AVIATION
SNA

NORTHWEST SITE
JOHN WAYNE AIRPORT
ORANGE COUNTY, CA

ATLANTIC

PRELIMINARY
NOT FOR
CONSTRUCTION

JRWMLER & ASSOCIATES SHALL RETAIN ALL COMMON
LAW, STATUTORY AND OTHER RESERVED RIGHTS,
INCLUDING THE COPYRIGHT FOR THIS DOCUMENT,
INCLUDING REPRESENTED DESIGNS AND SPECIFICATIONS.

OCSD FIRST
FLOOR PLAN
MATERIALS

AS NOTED
DATE Author
DWN

AS NOTED
SCALE Checker
CHK

JRMA Project No.
4740

ID3.2



2700 SATURN ST, BREA, CA 92821
T. 714.524.1870 F. 714.524.1875
WWW.JRMA.COM

Project Revision		
△	RFP SUBMITTAL	12.19.2019

FULL-SERVICE
FIXED BASE
OPERATOR

ATLANTIC
AVIATION
SNA

NORTHWEST SITE
JOHN WAYNE AIRPORT
ORANGE COUNTY, CA



PRELIMINARY
NOT FOR
CONSTRUCTION

JR MILLER & ASSOCIATED SHALL RETAIN ALL COMMON LAW
STATUTORY AND OTHER RESERVED RIGHTS INCLUDING THE
COPYRIGHT FOR THIS DOCUMENT INCLUDING REPRESENTED
DESIGNS AND SPECIFICATIONS.

FBO
EXTERIOR
MATERIALS

AS NOTED	AS NOTED
DATE	SCALE
XX	XX
DWN	CHK

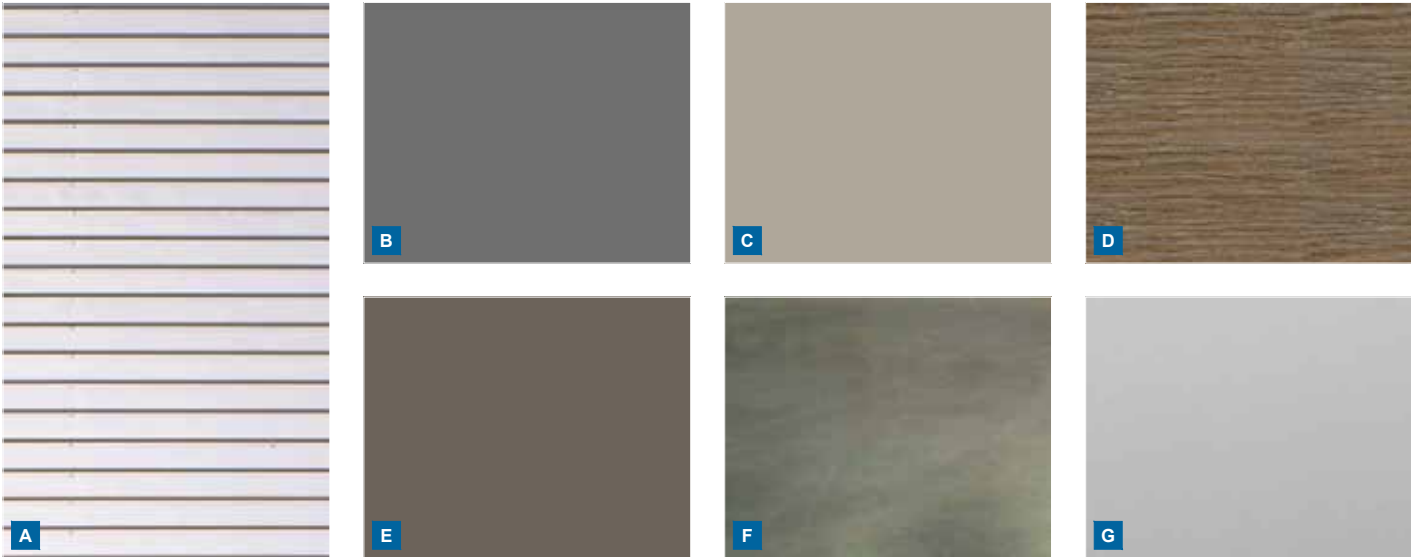
JRMA Project No.
4740

A9.5

EXTERIOR CONCEPT
FBO MATERIALS

SPECIFICATIONS

- A. T5 HORIZ : SNOWDRIFT WHITE
- B. MICA MFS GREY
- C. TSZ SILVER METALLIC
- D. NW17 MILANO GRIGIO
- E. A70.0.0 SLATE GREY
- F. CLEAR CONCRETE SEALER
- G. SOLAR GRAY





ENTRY VIEW FROM AIRWAY AVENUE 1



VIEW NORTH ALONG IKE JONES ROAD 2



HANGAR VIEW FROM FBO 3



HANGAR VIEW FROM AIRWAY AVENUE ENTRY 4

JRMA
ARCHITECTS ENGINEERS

2700 SATURN ST, BREA, CA 92821
T. 714.524.1870 F. 714.524.1875
WWW.JRMA.COM

Project Revision
RFP SUBMITTAL 12.19.2019

FULL-SERVICE
FIXED BASE
OPERATOR

**ATLANTIC
AVIATION
SNA**

NORTHWEST SITE
JOHN WAYNE AIRPORT
ORANGE COUNTY, CA

ATLANTIC

PRELIMINARY
NOT FOR
CONSTRUCTION

JR MILLER & ASSOCIATES SHALL RETAIN ALL COMMON LAW
SALUARY AND OTHER RESERVED RIGHTS, INCLUDING THE
COPYRIGHT FOR THIS DOCUMENT INCLUDING REPRESENTED
DESIGNS AND SPECIFICATIONS.

**HANGAR
EXTERIOR
RENDERINGS 2**

AS NOTED
DATE XX
DWN

AS NOTED
SCALE: XX
CHK

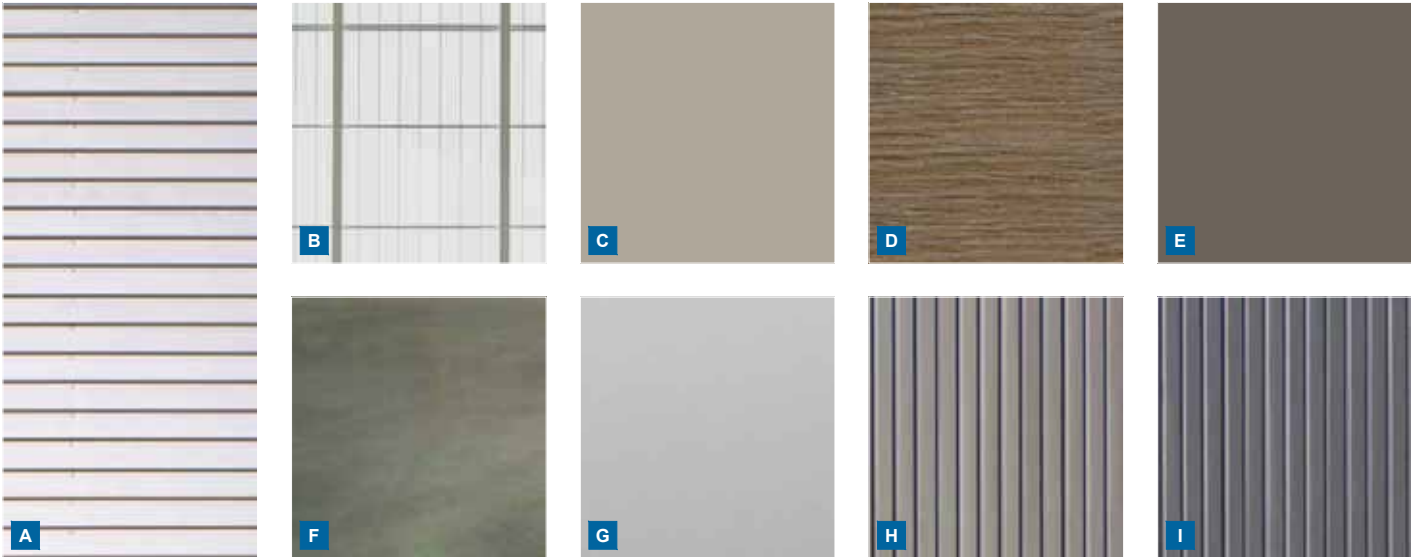
JRMA Project No.
4740

A9.7

SPECIFICATIONS

- A. T5 HORIZ. SNOWDRIFT WHITE
- B. GRAY MATTE
- C. TSZ SILVER METALLIC
- D. NW17 MILANO GRIGIO
- E. A70 0.0 SLATE GREY
- F. CLEAR CONCRETE SEALER
- G. SOLAR GRAY
- H. T6-A VERT. OLD ZINC GRAY
- I. T6-A VERT. SLATE GRAY

EXTERIOR CONCEPT
HANGAR MATERIALS



JRMA
ARCHITECTS ENGINEERS

2700 SATURN ST, BREA, CA 92821
T. 714.524.1870 F. 714.524.1875
WWW.JRMA.COM

Project Revision
RFP SUBMITTAL 12.19.2019

FULL-SERVICE
FIXED BASE
OPERATOR

ATLANTIC
AVIATION
SNA

NORTHWEST SITE
JOHN WAYNE AIRPORT
ORANGE COUNTY, CA

ATLANTIC

PRELIMINARY
NOT FOR
CONSTRUCTION

JR MILLER & ASSOCIATES SHALL RETAIN ALL COMMON LAW
STATUTORY AND OTHER RESERVED RIGHTS, INCLUDING THE
COPYRIGHT FOR THIS DOCUMENT INCLUDING REPRESENTED
DESIGNS AND SPECIFICATIONS.

HANGAR
EXTERIOR
MATERIALS

AS NOTED
DATE XX
DWN

AS NOTED
SCALE XX
CHK

JRMA Project No.
4740

A9.8



2700 SATURN ST, BRE, CA 92821
T. 714.524.1870 F. 714.524.1875
WWW.JRMA.COM

Project Revision	
RFP SUBMITTAL	12.19.2019

FULL-SERVICE
FIXED BASE
OPERATOR

ATLANTIC
AVIATION
SNA

NORTHWEST SITE
JOHN WAYNE AIRPORT
ORANGE COUNTY, CA



PRELIMINARY
NOT FOR
CONSTRUCTION

JR MILLER & ASSOCIATES SHALL RETAIN ALL COMMON LAW
STATUTORY AND OTHER RESERVED RIGHTS, INCLUDING THE
COPYRIGHT FOR THIS DOCUMENT INCLUDING REPRESENTED
DESIGNS AND SPECIFICATIONS.

SUSTAINABLE
DESIGN

AS NOTED	AS NOTED
DATE	SCALE:
XX	XX
DWN	CHK

JRMA Project No.
4740

SD1.1

HIGH EFFICIENCY
HVAC



COOL ROOF
WITH INSULATION



PHOTOVOLTAIC
PANELS



BUILDING ENVELOPE AND
STRUCTURAL RECYCLED
CONTENT MATERIALS



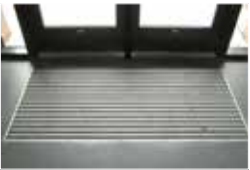
LOW EMISSIVITY
FINISH MATERIALS



LOW FLUSH
URINALS/TOILETS



WALK-OFF GRATES



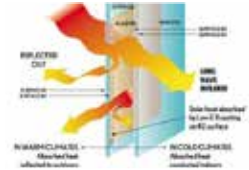
BICYCLE RACK



HAND DRYERS



HIGH PERFORMANCE
GLAZING



ELECTRIC VEHICLE
CHARGING STATIONS



NATIVE
LANDSCAPING



STORMWATER
BIOSWALE



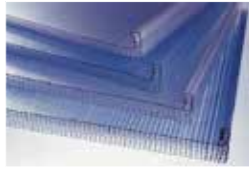
REFLECTIVE PAVING
MATERIAL



LOW EMITTING
INSULATION

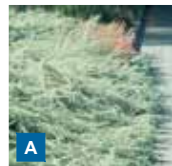


INSULATED TRANSLUCENT
CLERESTORY GLAZING

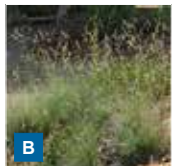




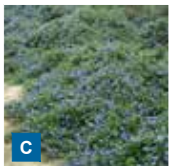
LANDSCAPE CONCEPT 1



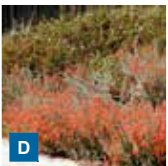
A
ARTEMISIA CALIFORNICA
CANYON GRAY SAGEBRUSH



B
BOUTELOUA GRACILIS
BLUE GRAMA



C
CEANOTHUS GRISEUS
YANKEE POINT



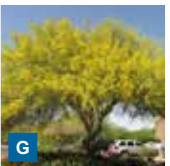
D
EPIOBIUM CANUM
CALIFORNIA FUCHSIA



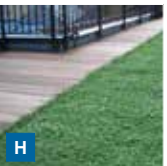
E
ERIOGONUM FASCICULATUM
CALIFORNIA BUCKWHEAT



F
MUHLENBERGIA RIGENS
DEERGRASS



G
PARKINSONIA FLORIDA
BLUE PALO VERDE



H
PHYLLA NODIFLORA
KURAPIA



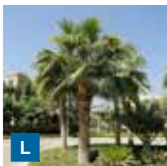
I
SALVIA CLEVELANDI
CLEVELAND SAGE



J
SPHAERALCEA AMBIGUA
DESERT GLOBEMALLOW



K
TRICHOSTEMA LANATUM
WOOLLY BLUECURLS



L
WASHINGTONIA ROBUSTA
MEXICAN FAN PALM

PLANT PALETTE 2



2700 SATURN ST. BREA, CA 92821
T. 714.524.1870 F. 714.524.1875
WWW.JRMA.COM

Project Revision
RFP SUBMITTAL 12.19.2019

FULL-SERVICE
FIXED BASE
OPERATOR

ATLANTIC
AVIATION
SNA

NORTHWEST SITE
JOHN WAYNE AIRPORT
ORANGE COUNTY, CA



PRELIMINARY
NOT FOR
CONSTRUCTION

JR MILLER & ASSOCIATES SHALL RETAIN ALL COMMON LAW
STATUTORY AND OTHER RESERVED RIGHTS, INCLUDING THE
COPYRIGHT FOR THIS DOCUMENT INCLUDING REPRESENTED
DESIGNS AND SPECIFICATIONS.

LANDSCAPE
CONCEPT

AS NOTED
DATE XX
DWN

AS NOTED
SCALE: XX
CHK
JRMA Project No.
4740

L1.1