

From: John Warner
Sent: Monday, April 15, 2019 12:18 PM
To: COB_Response
Cc: MSteel; 'Fred Fourcher'
Subject: GA Improvement at SNA
Attachments: So Cal Pilots Town Hall 4-6-19 With Notes.pdf

Dear Orange County Supervisors,
Several Lincoln Club members (pilots) have reached out to me to assist them in getting the attached airport plan before the Board.

As explained to me, I believe the plan to be a viable solution to the issue.

I would strongly urge you to invite Fred Fourcher, board member of the So Cal Pilots Association, to immediately address the Board of Supervisors.

Thank you for your attention,

John Warner
President
Lincoln Club of OC

From: Fred Fourcher
Sent: Saturday, April 13, 2019 9:17 PM
To: John Warner
Subject: FW: GA Improvement at SNA

John,

I reached out to Jeff Herdman, Joy Brenner and Diane Dixon. I should be talking with Joy and Diane tomorrow.

It would be helpful if you sent a brief note stating the following to Andrew Do, Don Wagner, Lisa Bartlett and Michelle Steel.

GA Improvement Plan for SNA

As Lincoln Club Members who are Pilots and residents of Orange County we want what is best for both the airport community and the surrounding communities. We are recommending a No Vote on Alternative 1. We urge the Airport Commission and Board of Supervisors to review the So Cal Pilots Community Alternative and consider it as a viable alternative. Alternative 1 would add 7 acres to the Jet FBOs, taking that away from Light GA requiring 250 small planes to leave the airport with no viable place to go.

The Community Alternative specifics are:

1. The Light GA and GA Jet Activity is kept at the same levels with the space allocated to each staying the same as it is today.
2. 5 parcels, 2 for light GA and 3 for Jet FBOs to keep them competitive and does not create one larger FBO with Regional Jets.

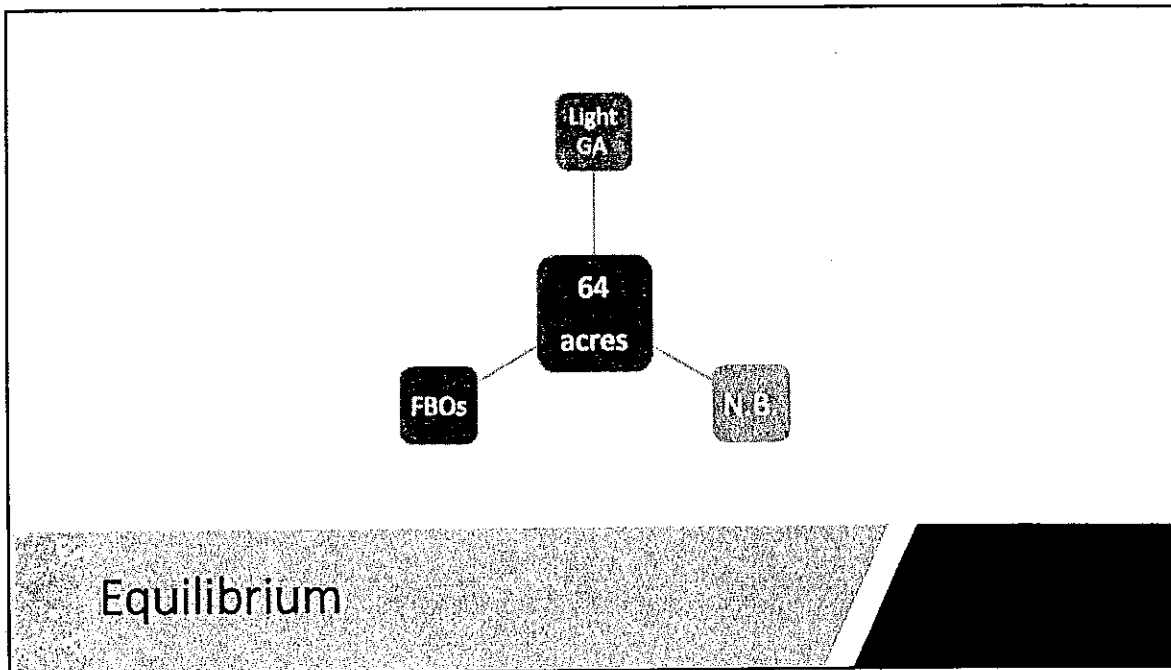
I have attached a PDF with a diagram of what we are proposing along with notes on each slide.

Fred Foucher, Co-Founder and Board Member So Cal Pilots Association



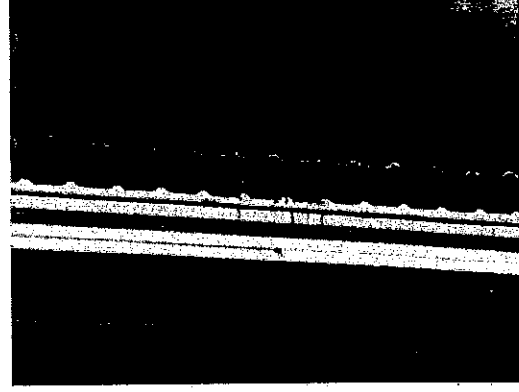
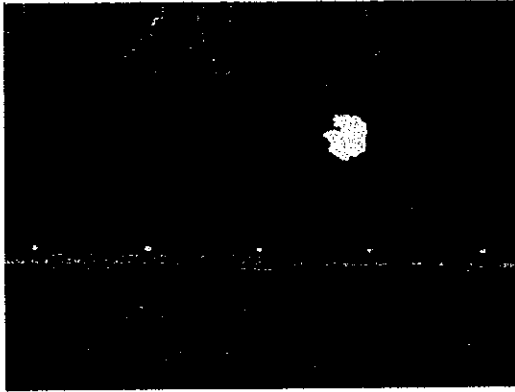
Community Alternative Concept

John Wayne Airport General Aviation
Improvement Program

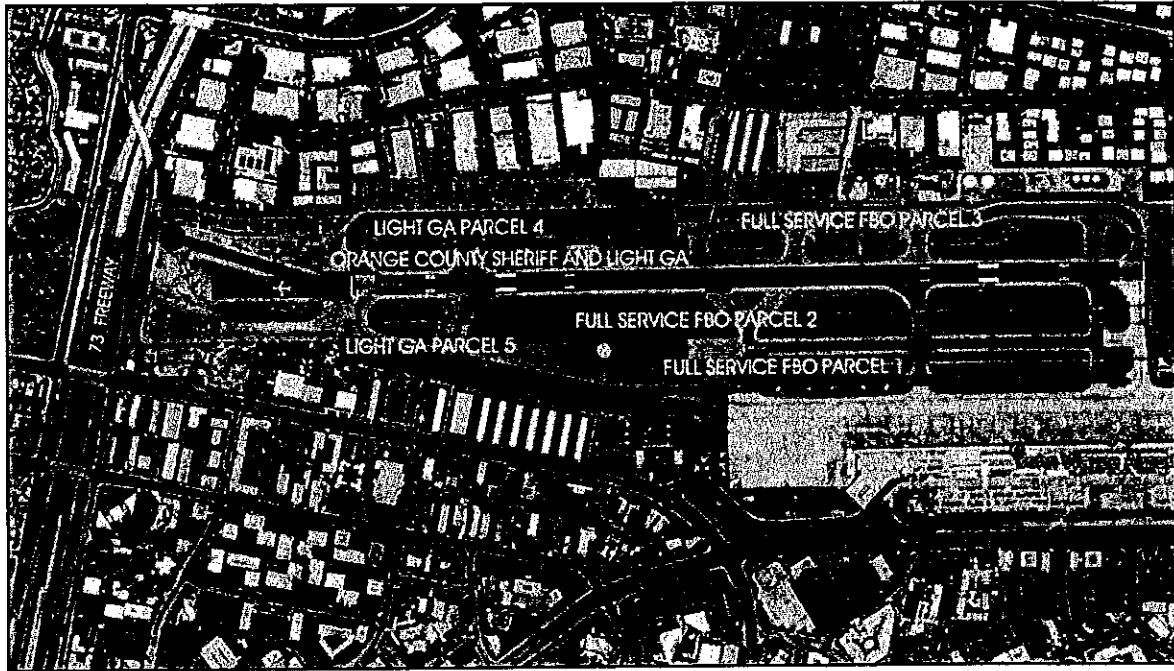


Our goal as pilots, aircraft owners and many who are residences of Newport Beach is to protect the communities involved. Those include the pilots, flight schools and maintenance facilities which we want to see stay in tact. We also want to see 3 full service FBO parcels and a level playing field for selecting the FBOs. We also respect the surrounding communities and want to see the impact on these communities remain the same. The plan we are proposing keeps this equilibrium while trading off open tie downs for hangars to keep our planes out of the elements. This plan does not increase or decrease any of the GA Flight operations and paves a way for light GA to transition to quiet electrical power in the future.

Circa 1963 Hangars Along Campus



These hangars are 56 years old and well beyond their useful life. There is currently a 35 year waiting list for a hangar.



We are proposing three Full Service FBP Parcels and two Limited Service FBO parcels. The limited service FBO parcels would handle light GA planes as exist on the field today with less open tie downs and more to be in hangars. We support 3 full service FBO parcels of approximately the same size with roughly the same total acreage as full service FBOs use today. Three smaller full service FBO parcels keep out regional jet operations as compared to two parcels with one being much larger and capable of supporting scheduled regional jet operations. Three businesses of any type will be more competitive than two. It is to all our best interests to see a competitive landscape for the full service FBOs as well as a level playing field for their selection.

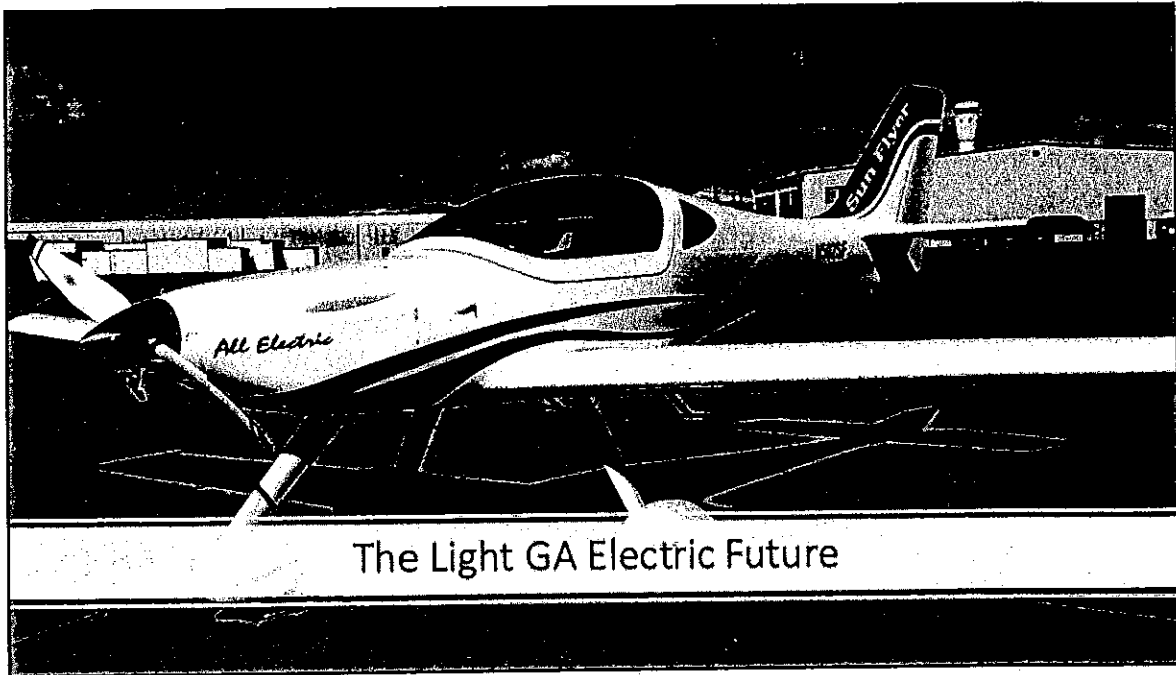
Leasehold Acreage

- **Current Full Service FBOs**
 - 17.2 Acres for ACI
 - 10 Acres for Atlantic
 - Total Full Service FBO 27.2
- **Current Light GA**
 - GA along Campus 14.8 acres
 - GA covered tie downs 7.6 acres
 - GA Jays 14.3 acres
 - Total Light GA acreage is 36.7
- **Total Current Acreage: 63.9**
- **Proposed Full Service FBOs**
 - PARCEL 1 = 9.8 ACRES
 - PARCEL 2 = 9.7 ACRES
 - PARCEL 3 = 10.1 ACRES
 - Full service FBO acreage 29.6
 - Light GA within FS FBO acreage 2
 - Total acreage for Jets 27.6
- **Proposed Light GA Usable**
 - PARCEL 4 = 15 ACRES (Less Sheriff)
 - PARCEL 5 = 19 ACRES
 - Light GA within FS FBO acreage 2
 - Total Light GA acreage 36
 - Total Proposed Acreage 63.6

Our proposal keeps the equilibrium between Jets and Light GA at SNA.

There are residents of Newport Beach who because of a lack of hangars keep their planes at other airports and fly them in to pick up passengers and fly out again. The logistics create two trips instead of one. We feel their needs are a factor as well.

For Light GA aircraft there is a 35 year waiting list for hangars at SNA and a long waiting list for hangars at Fullerton, the only other airport in Orange County



As battery and charging technologies mature, we will see planes like this take over the training market and eventually work their way into mainstream light GA. These planes are truly silent and have 0 emissions. Hangars are the key to housing and charging this new kind of aircraft.

The reason these aircraft will quickly take over the training market is that they operate at 1/3 the cost per hour of a Cessna 172 which is currently one of the most popular training aircraft.

Table 11: Based Aircraft Storage Capacity

Summary	Full Svc NW FBO	ACI Jet Full Svc NE FBO	Atlantic Aviation Full Svc SE FBO	Jay's Maint Ltd Svc SW FBO	Martin Aviation Ltd Svc FBO	Executive Hangars T- Hangars	SouthCoast Hangars Box Hangars	Orange County Tie- Downs	Flight School	OC&D	Total
Existing Conditions	-	73	39	0	8	97	11	368	0	-	596
Proposed Project	32	30	0	17	8	96	30	88	47	5	354
Alternative 1	32	30	30	17	8	114	0	72	47	5	356
Alternative 2	0	30	30	17	8	72	19	132	47	5	361
Alternative 3	0	73	23	0	8	97	11	342	0	0	554

Note: May not sum due to rounding

This is a summary provided by the county of the existing and proposed alternatives.