



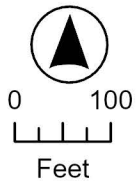
Assets to be Transferred to County:	
BE74Q-101.11	Selva parking lot storm water treatment BMPs improvements
BE74Q-118 BE74Q-120	Restroom facilities
BE74Q-103.01 BE74Q-101.61	North Strand Beach access improvements, walkway, stairs, overlooks, landscaping, irrigation, fencing, signage, precise grading, area drainage, walls, public utilities, benches, etc.

DESIGNED AND PRODUCED BY:
OCOR
OC Parks GIS

DATA SOURCE:
OC Parks; OCPW; Eagle Aerial 2023

The County of Orange and OCCR/OC Parks/Survey/GIS/LIS make no representations or warranties regarding the registration or accuracy of the data from which this map was derived. Neither the County nor OCCR/OC Parks/Survey/GIS/LIS shall be liable under any circumstances for any direct, indirect, special, incidental or consequential damages with respect to any claim by any user or any third party on account of or arising from the use of this map.

DATE: Jan. 9, 2026



Selected Park Parcels

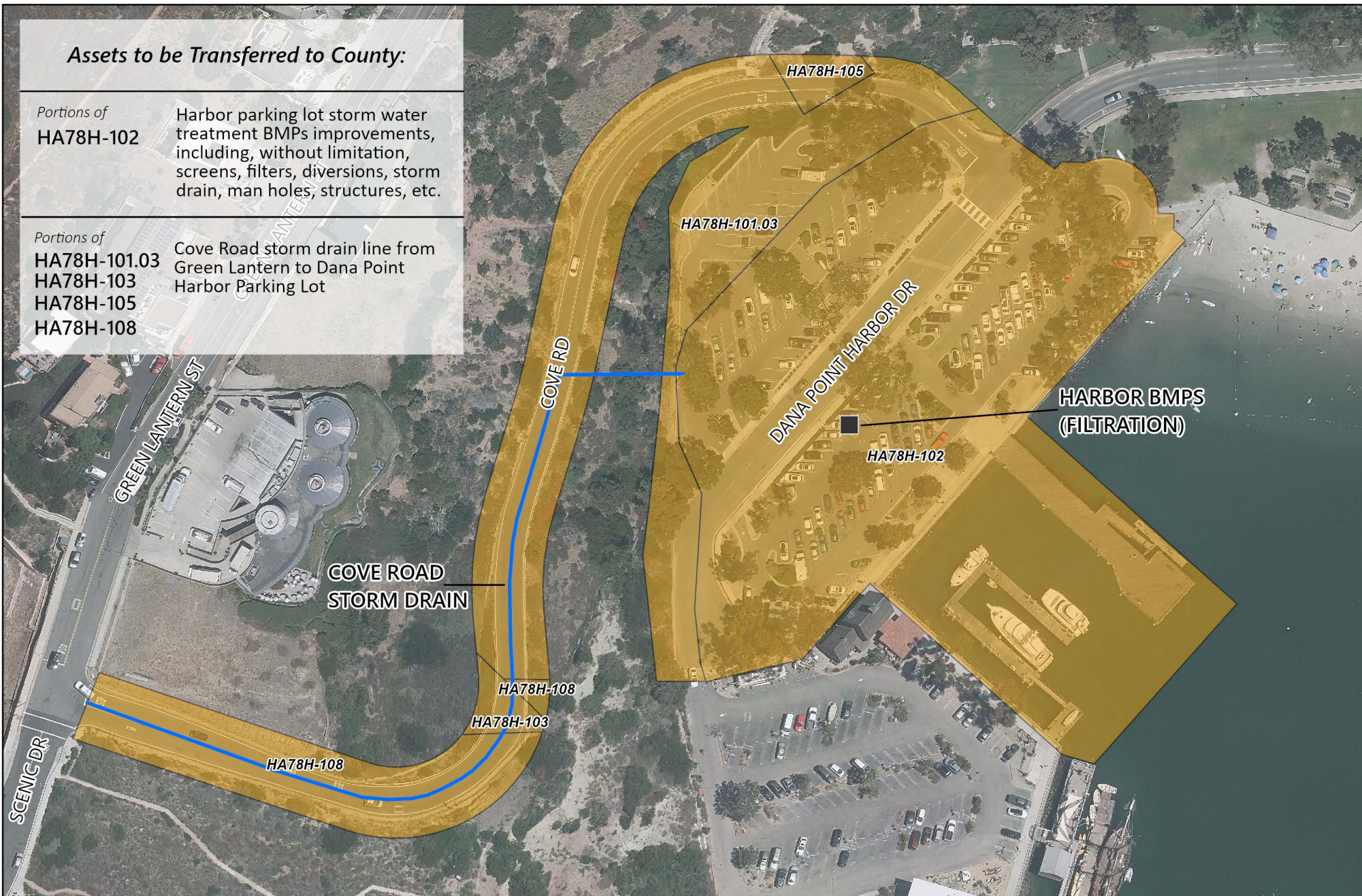
Strands Beach



Assets to be Transferred to County:

Portions of
HA78H-102 Harbor parking lot storm water treatment BMPs improvements, including, without limitation, screens, filters, diversions, storm drain, man holes, structures, etc.

Portions of
HA78H-101.03 Cove Road storm drain line from Green Lantern to Dana Point Harbor Parking Lot
HA78H-103 Harbor Parking Lot
HA78H-105
HA78H-108

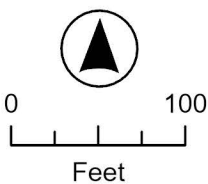


DESIGNED AND PRODUCED BY:
OC CR
OC Parks GIS

DATA SOURCE:
OC Parks; OCPW; Eagle Aerial 2023

The County of Orange and OCCR/OC Parks/Survey/GIS/LIS make no representations or warranties regarding the registration or accuracy of the data from which this map was derived. Neither the County nor OCCR/OC Parks/Survey/GIS/LIS shall be liable under any circumstances for any direct, indirect, special, incidental or consequential damages with respect to any claim by any user or any third party on account of or arising from the use of this map.

DATE: Jan. 9, 2026



Selected Park Parcels

Dana Point Harbor

